
[The Spectrum and other Yearbooks](#)

[Special Collections](#)

Spring 1929

Spectrum, 1929

Georgia College and State University

Follow this and additional works at: <https://kb.gcsu.edu/spectrum>



Part of the [Higher Education Commons](#)

Recommended Citation

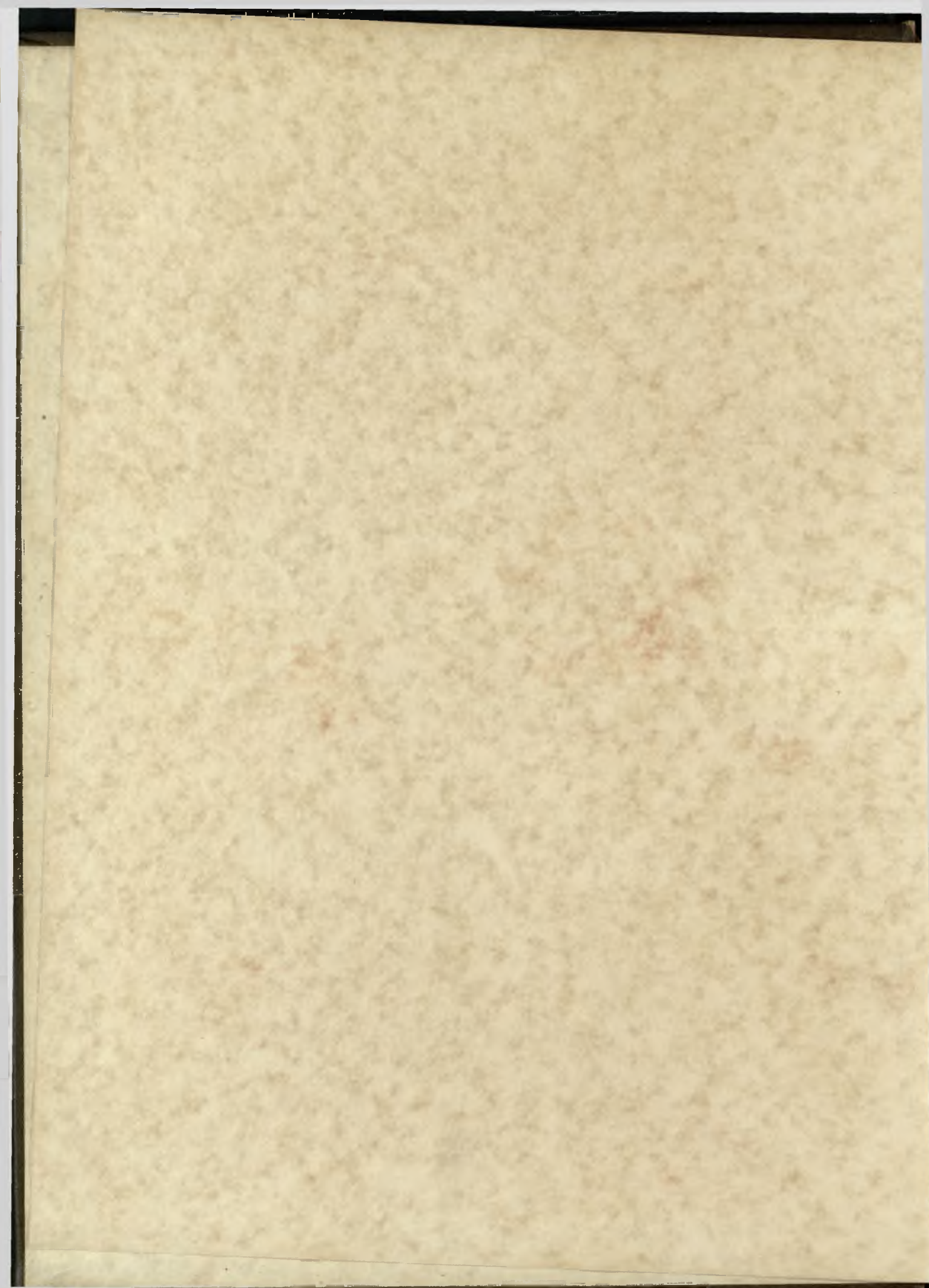
Georgia College and State University, "Spectrum, 1929" (1929). *The Spectrum and other Yearbooks*. 12.
<https://kb.gcsu.edu/spectrum/12>

This Book is brought to you for free and open access by the Special Collections at Knowledge Box. It has been accepted for inclusion in The Spectrum and other Yearbooks by an authorized administrator of Knowledge Box.

Spectrum



1892





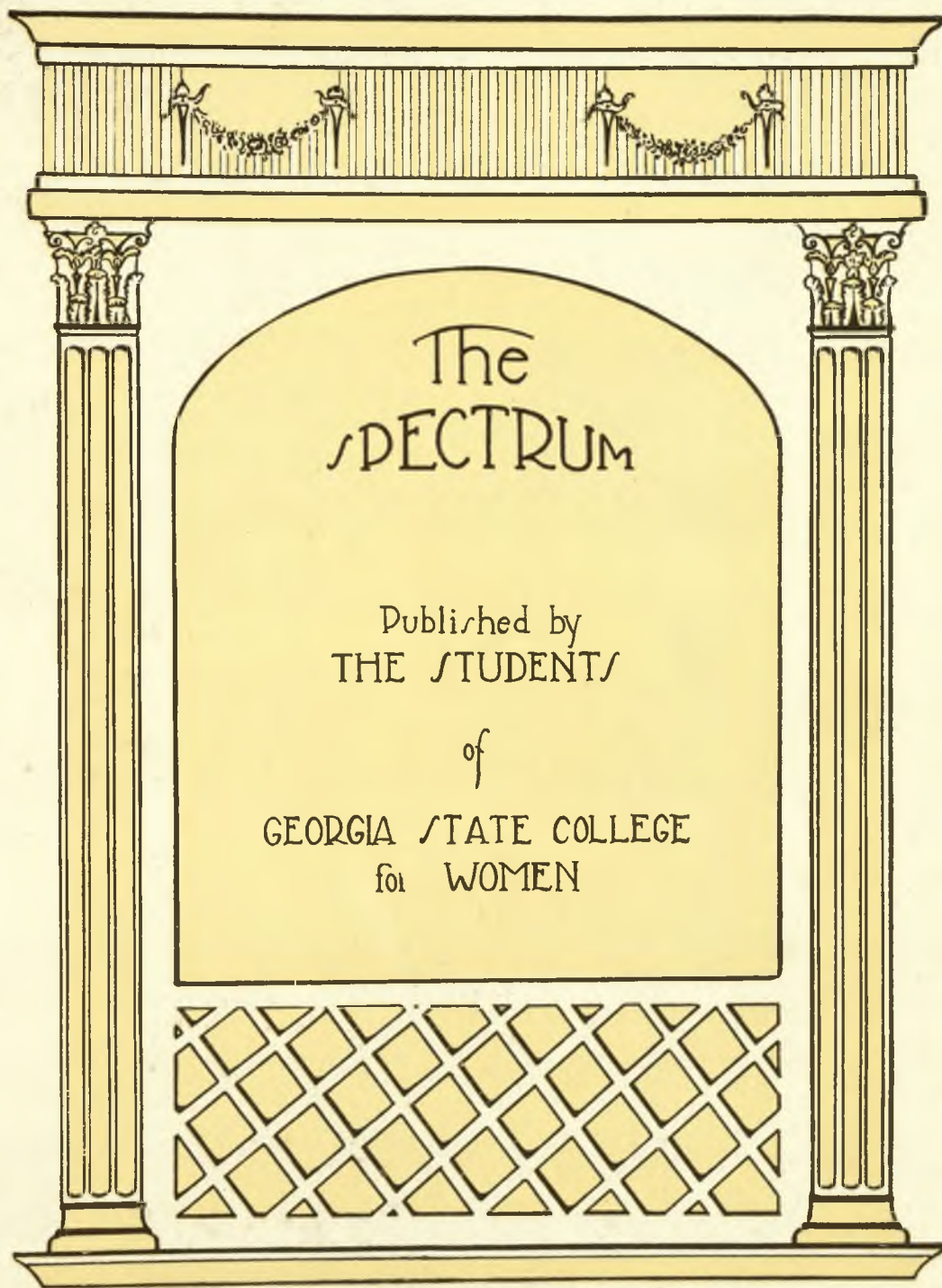
◆
The
1929
SPECTRUM
◆



Copyright
1929

ROBERTINE MCCLENDON
Editor

FRANCES CHRISTIE
Business Manager

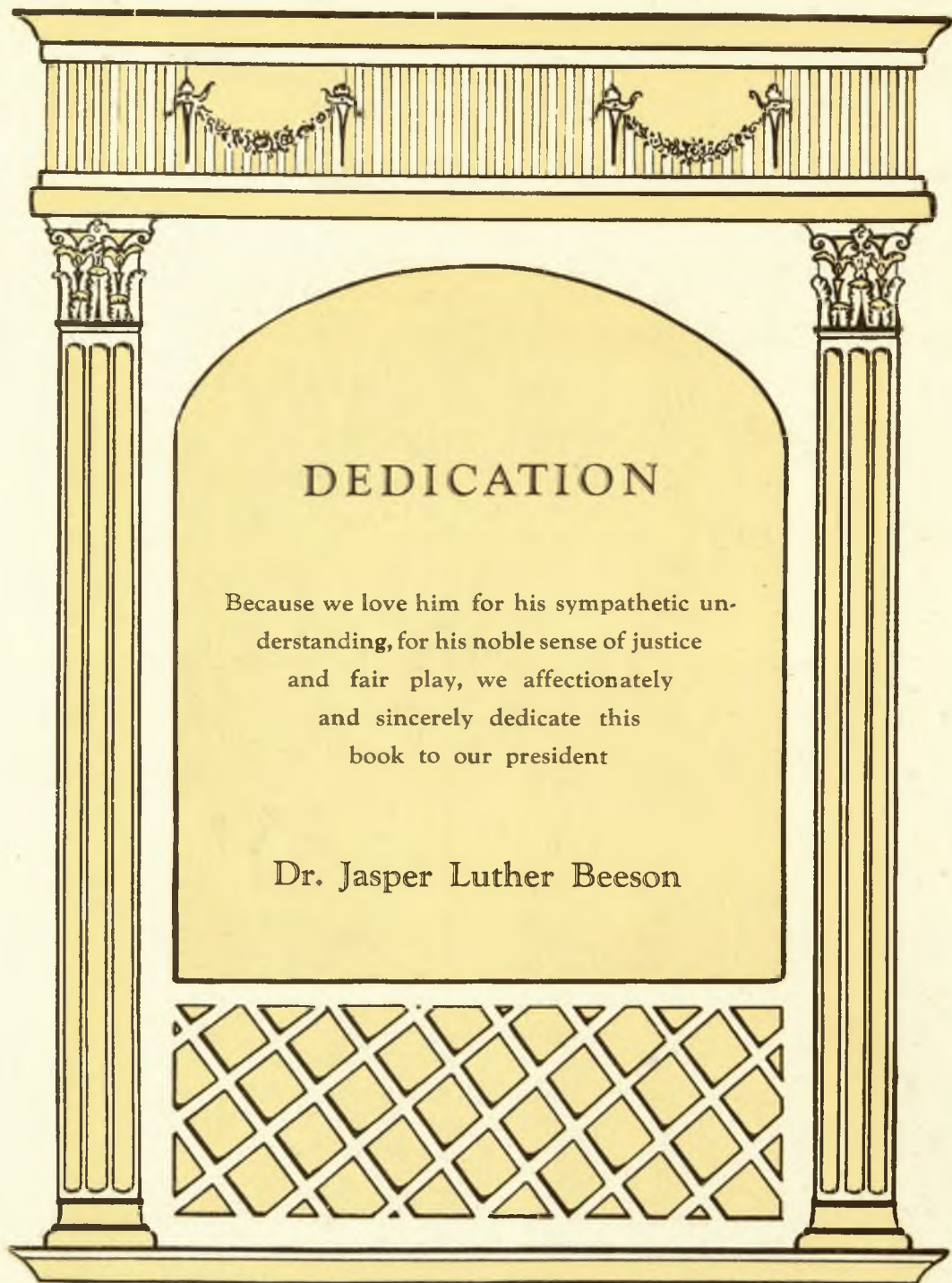


The
SPECTRUM

Published by
THE STUDENTS

of

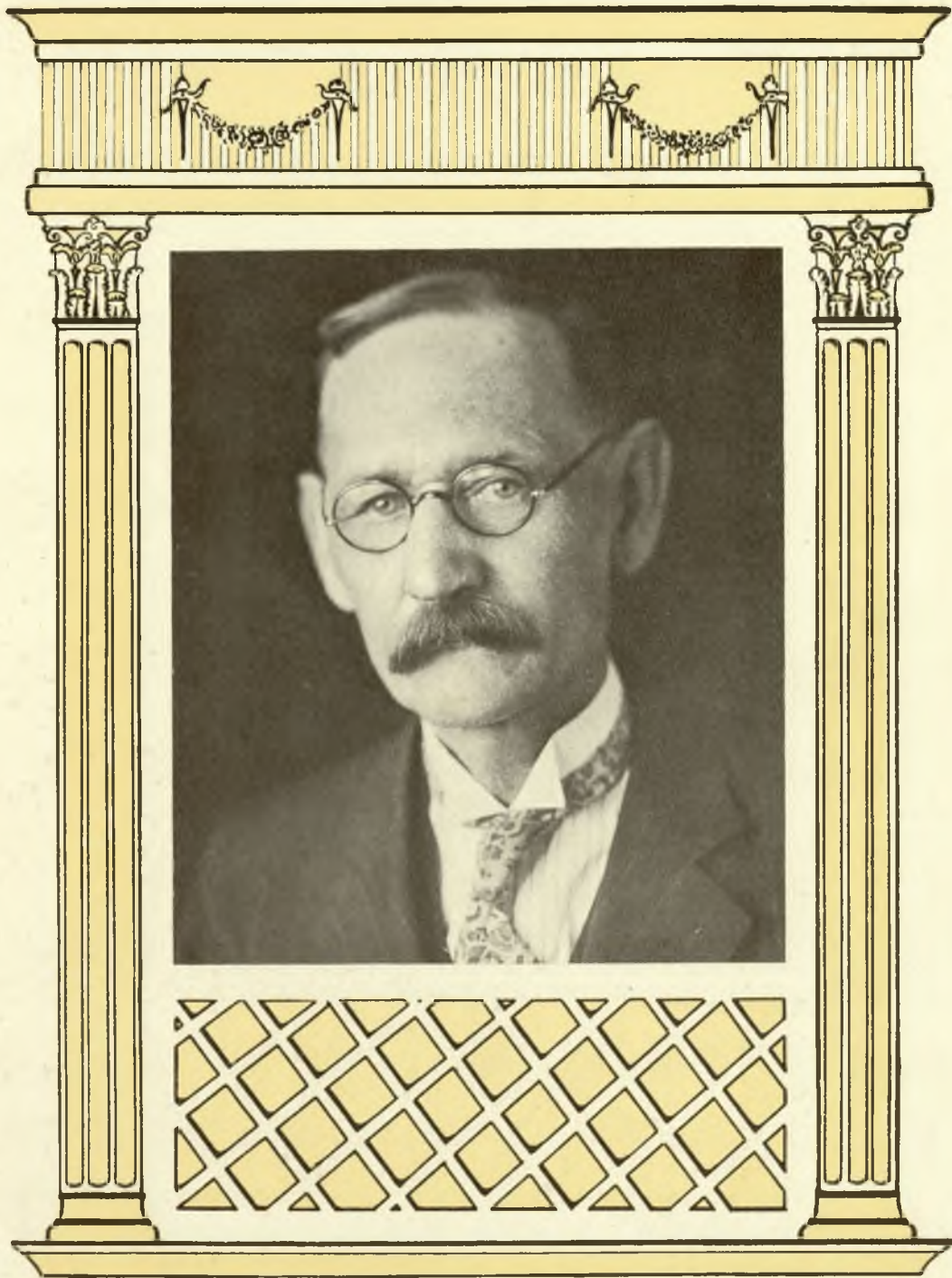
GEORGIA STATE COLLEGE
for WOMEN

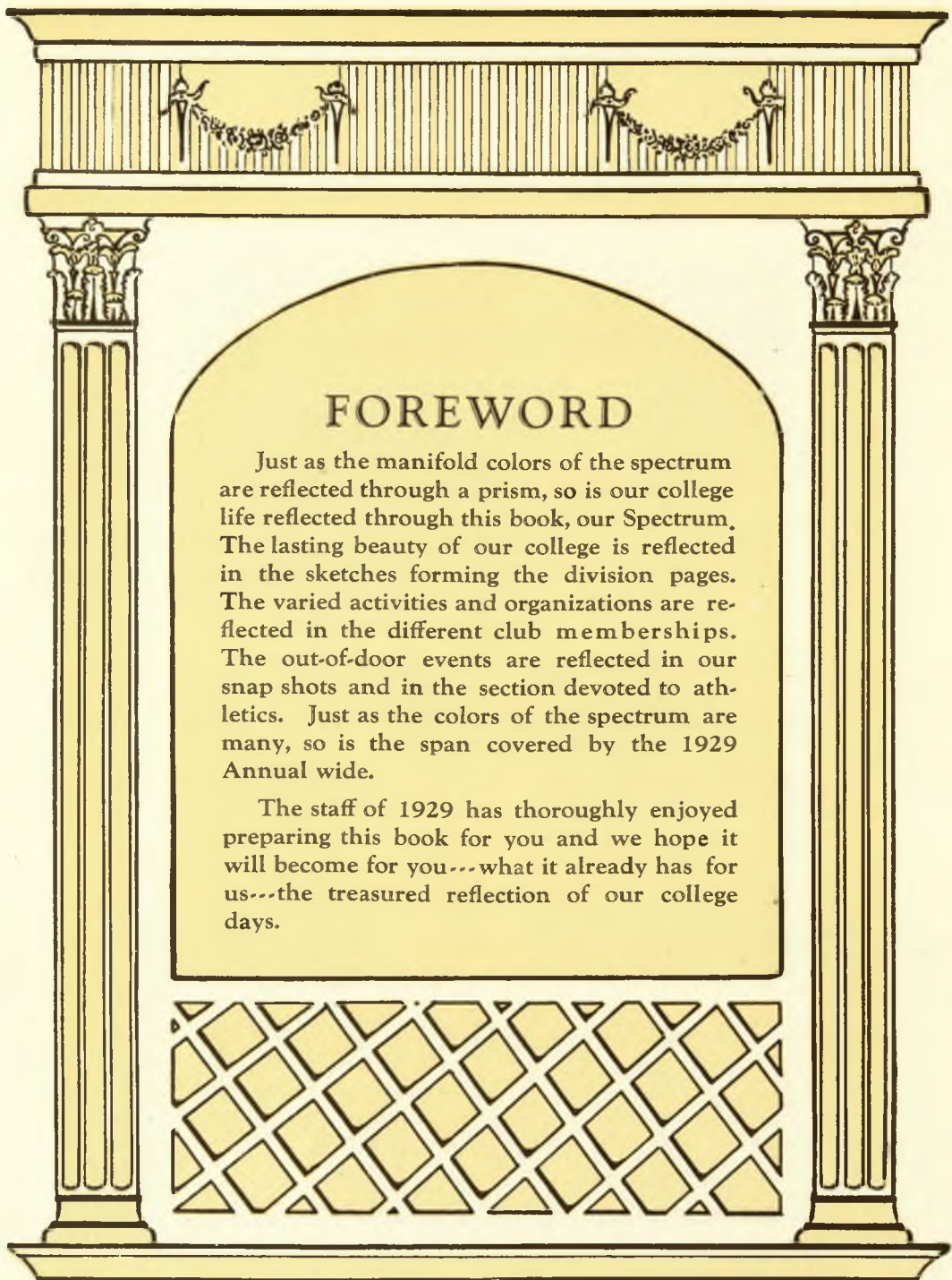


DEDICATION

Because we love him for his sympathetic understanding, for his noble sense of justice and fair play, we affectionately and sincerely dedicate this book to our president

Dr. Jasper Luther Beeson

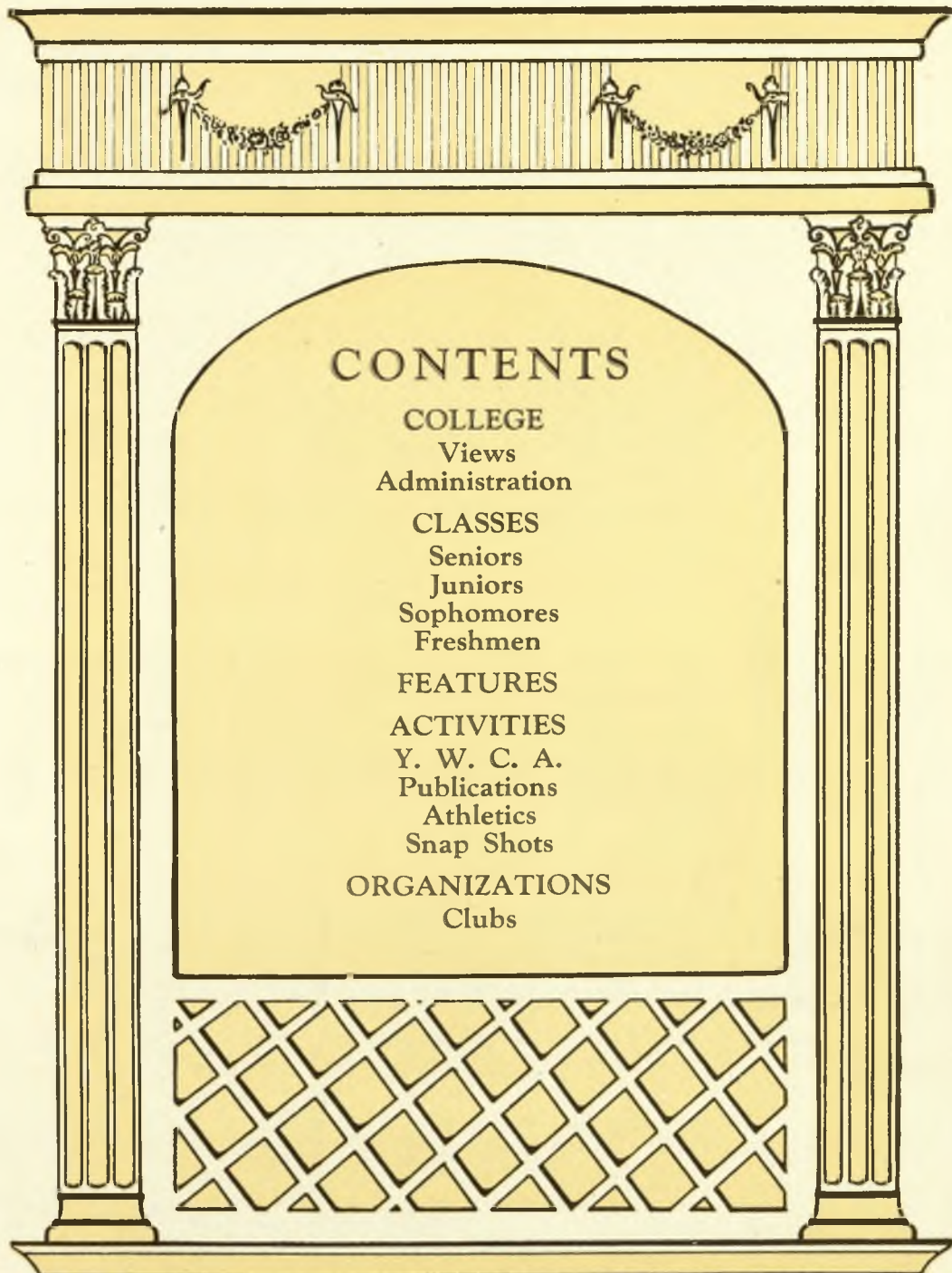




FOREWORD

Just as the manifold colors of the spectrum are reflected through a prism, so is our college life reflected through this book, our Spectrum. The lasting beauty of our college is reflected in the sketches forming the division pages. The varied activities and organizations are reflected in the different club memberships. The out-of-door events are reflected in our snap shots and in the section devoted to athletics. Just as the colors of the spectrum are many, so is the span covered by the 1929 Annual wide.

The staff of 1929 has thoroughly enjoyed preparing this book for you and we hope it will become for you---what it already has for us---the treasured reflection of our college days.



CONTENTS

COLLEGE

Views
Administration

CLASSES

Seniors
Juniors
Sophomores
Freshmen

FEATURES

ACTIVITIES

Y. W. C. A.
Publications
Athletics
Snap Shots

ORGANIZATIONS

Clubs

Alma Mater

Thru the years, the standards of you
Guide us to goals ever higher and true,
Serving each day, guiding our way,
Hail Alma Mater, our G. S. C.

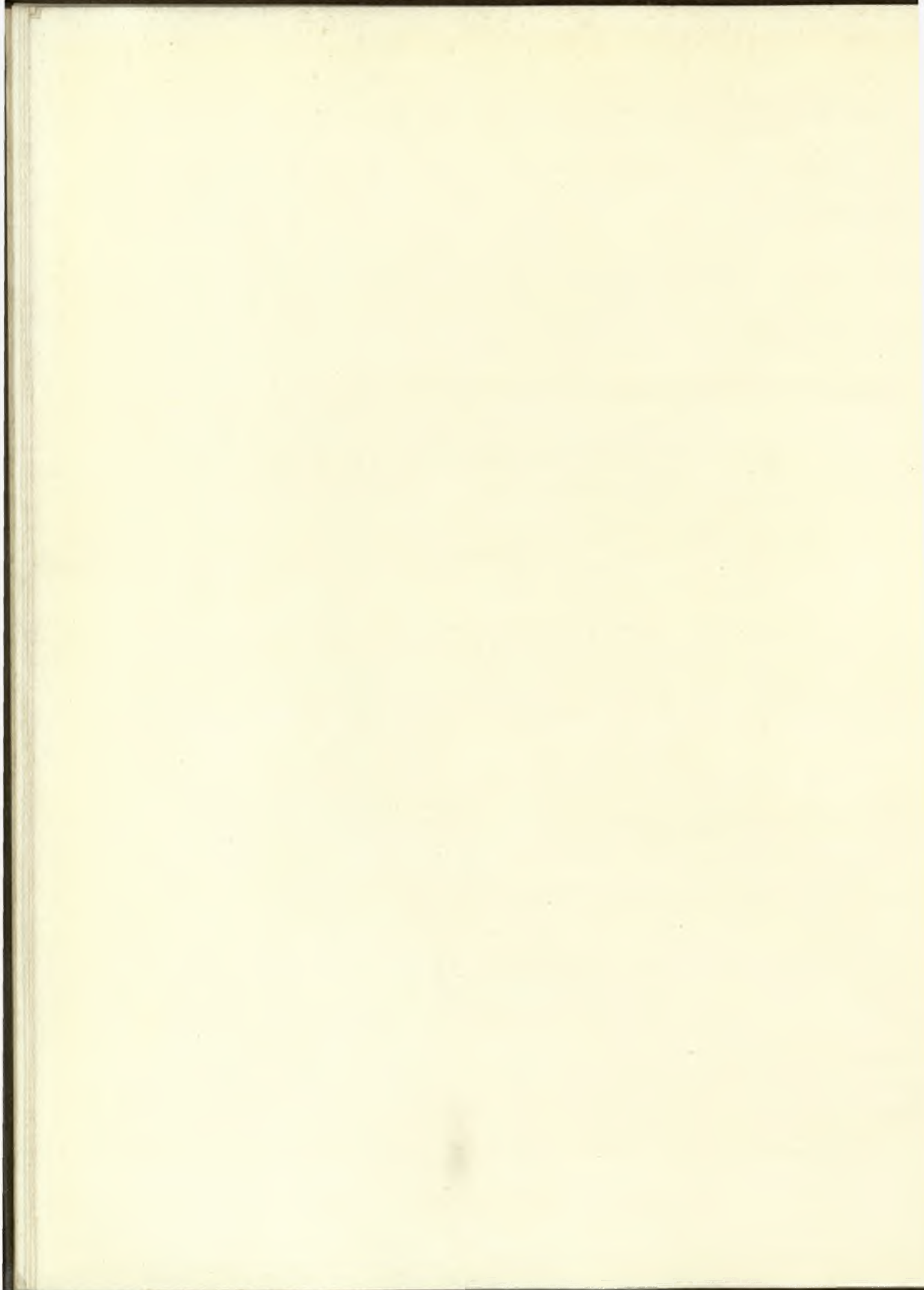
CHORUS

Hail Alma Mater, our G. S. C.,
In heart and soul 'twill be our goal
To serve thee faithfully;
Daughters of Georgia
Praise thee always,
Hail Alma Mater. Hail G. S. C.

Brightly beams in all of our dreams
Your light of service, guiding our way,
Tho' we may go far, far, away,
We'll ne'er forget you, our G. S. C.

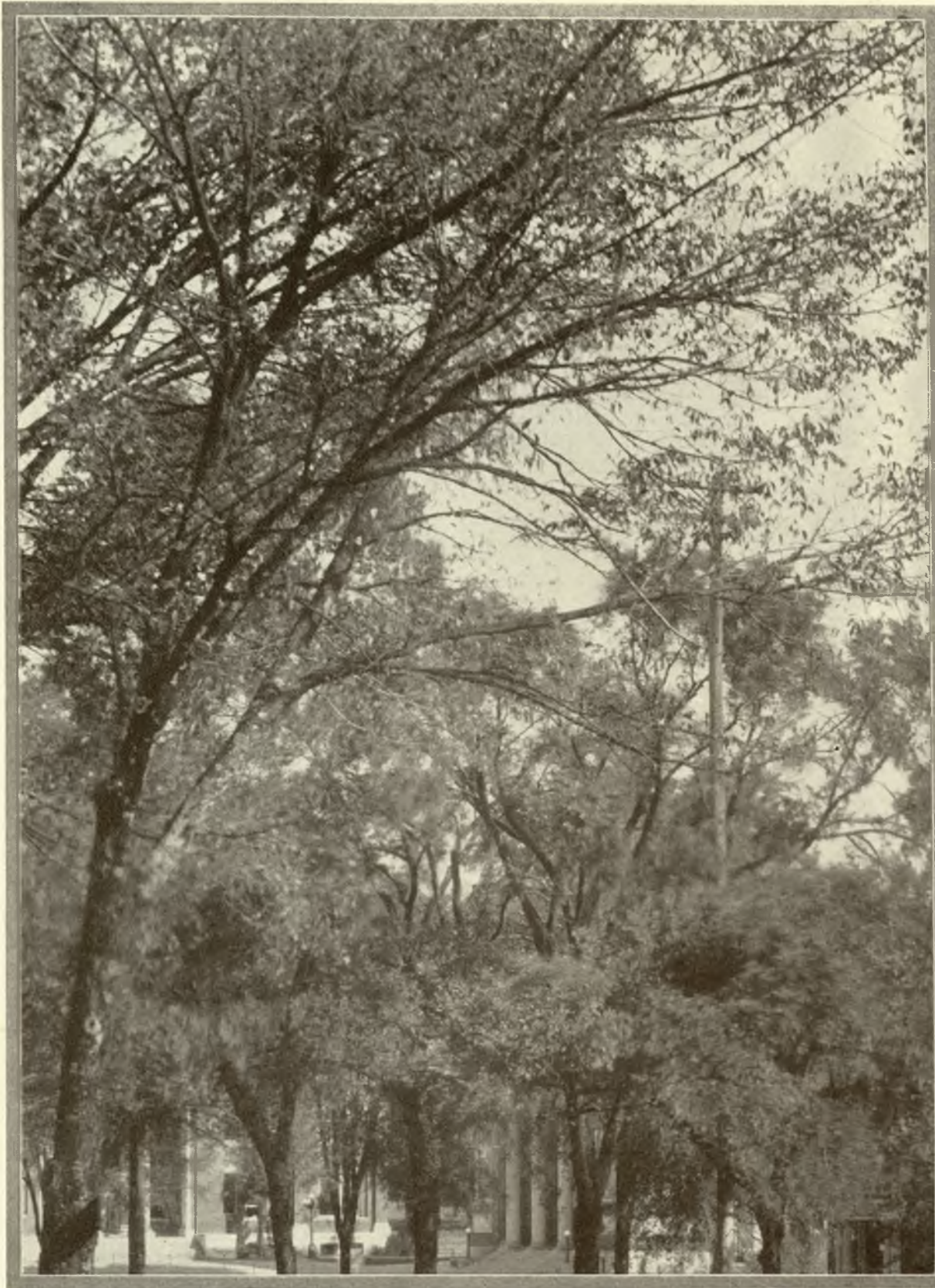


THE COLLEGE





Entrance

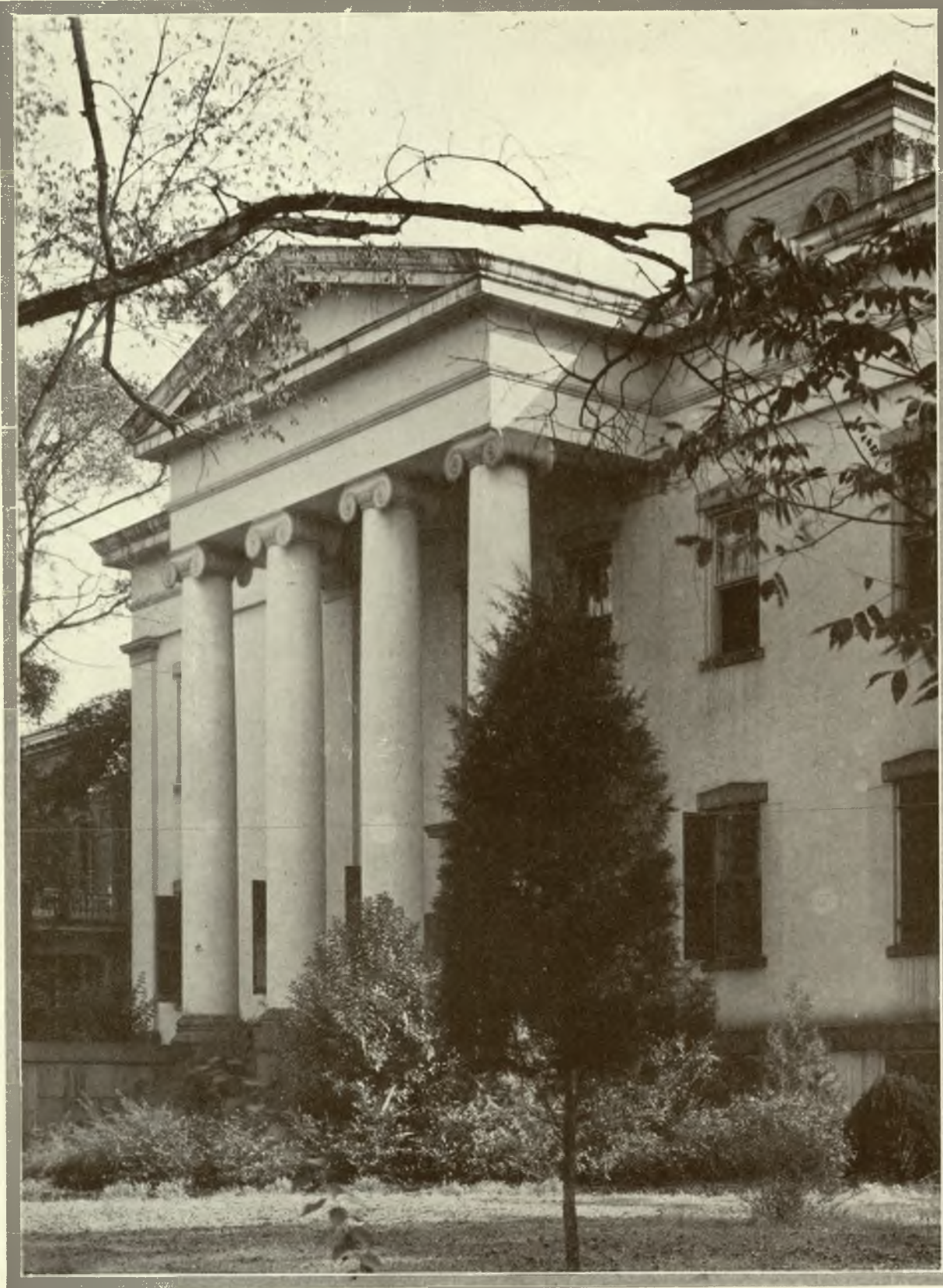


Auditorium





Parks Hall



The Mansion

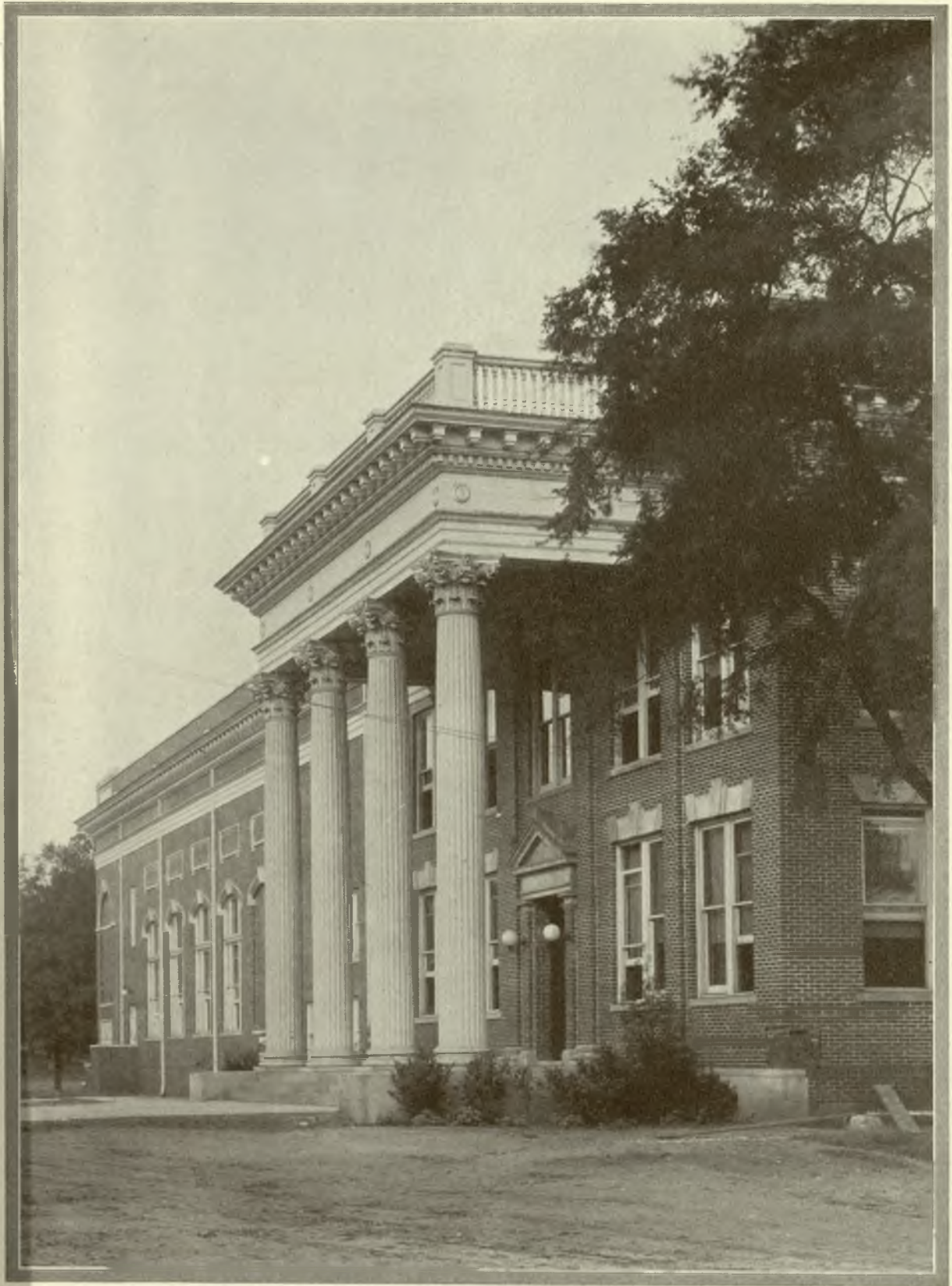




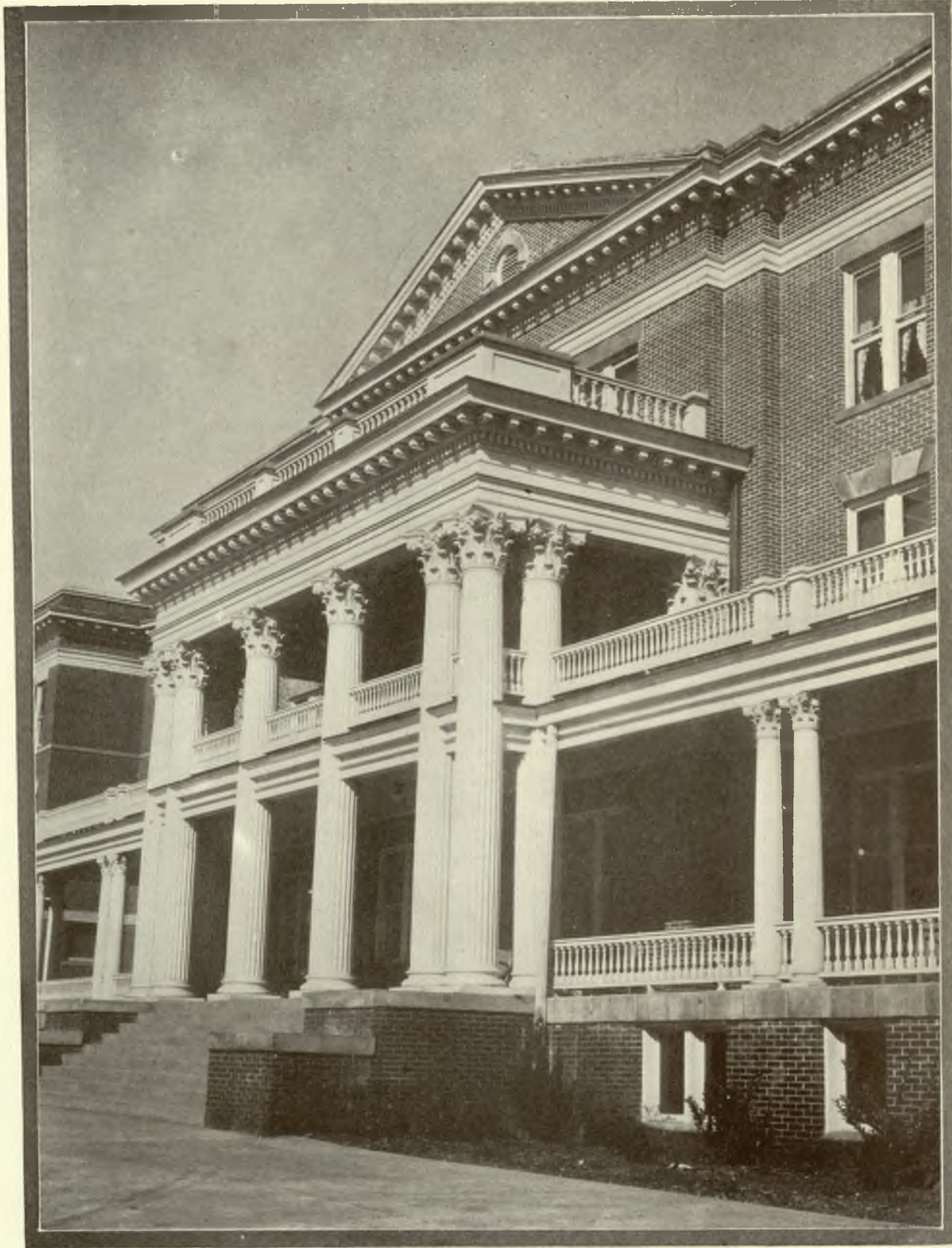
Terrell Hall



Chappell Hall



Arts Building



New Dormitory



A
D
M
I
N
I
S
T
R
A
T
I
O
N



Heads of Departmen



MISS L. R. G. BURFITT
Peabody High School

DR. E. H. BOHM
French

DR. FRANCIS DANIELS
Foreign Languages

MRS. FERN E. DORRIS
Geography

MISS MABRY HARPER
Household Art

DR. AMANDA JOHNSON
History

MISS MAGGIE JENKINS
Public School Music

MISS ANNA MILLER
Physical Education

MISS LILLAS MYRICK
Chemistry, Acting Head

DR. W. T. WYNN
English

ts

Heads of Departments

MISS ALICE NAPIER

Mathematics

MISS MAMIE PADGETT

Art

MISS MABEL T. ROGERS

Physics

DR. EDWIN H. SCOTT

Dean of Teacher's College; Registrar

Agriculture and Biology

MR. OSCEOLA THAXTON
*Rural Education and School
Administration*

MISS KATE THRASH

Commercial

MRS. MARGARET ANN TUTTLE
Household Science

DR. GEORGE HARRIS WEBBER

Education and Psychology

MR. H. F. WHITE

Economics

MRS. KATHLEEN WILKINSON WOOTTEN

Health

MISS ALICE LENORE TUCKER

Music



H. F. White

Faculty

(Other than Department Heads)

ESTELLE ADAMS
MRS. W. H. ALLEN
MRS. ANN FULLER ANDERSON
MARY LEE ANDERSON
FLORENCE BARNETT
VALENTINE BARRON
SARA BIGHAM
EURI BELLE BOLTON
MARY B. BROOKS
ROSABEL BURCH
KATHARINE BUTTS
WINIFRED G. CROWELL
JIMMIE DECK
ELEANOR ENNIS
MARY JIM EVANS
EDITH FLETCHER
DR. JUANITA H. FLOYD
MALISSA GILES
ELIZABETH GRANT
ELOISE GREENE
BLANCHE HAMBY
MRS. E. R. HINES
BEATRICE HORSBRUGH
DR. A. C. HUNTER
MRS. MARY JOYCE IRELAND
MARGUERITE JACKSON
ELIZABETH JONES
SARA E. JONES
MRS. HELEN G. LONG
MRS. L. P. LONGINO
DR. THOS. B. MEADOWS
MRS. THOS. B. MEADOWS
ELIZABETH MOORE
CLARA MORRIS
MARY MOSS
LILLAS MYRICK
CLARA M. NIXON
ORA OREM
THERESA PYLE
ELIZABETH REESE

KATHERINE K. SCOTT
ANNIE SIMPSON
HALLIE CLAIRE SMITH
LOUISE SMITH
MARIE SMITH
ANNETTE STEELE
RUTH STONE
VIVIAN STONE
GUSSIE TABB
BLANCHE TAIT
LORINE TEAVER
FRANCES THAXTON
JESSIE TRAWICK
MRS. ALICE A. WILLIAMS

Student Assistants

VIVIAN MCLENDON
MARY BETH BARNETT
FANNIE SCHER
CAROLINE CHENEY
ELEANOR BRANNEN
MARGARET LUMPKIN
GLADYS MCMICHAEL
ELIZABETH GUINN
ALVARETTA KENAN
MARY ELLIOTT
CORNELIA CHAPPELL
ANNIE JOE MOYE
KATHERINE HEMPHILL
HELEN DASHER
BESS WHITE
PAUNEE RIGSBY
REBECCA HOLBROOK
LILLIAN BROWN
VERA JACKSON
CLARA MAE COWART
MONTEZ CRAWFORD
FRANCES MATTHEWS
MARGARET CANDLER

MARY JULIA DOSTER
NELLE EDWARDS
WINIFRED BROOKS

Office Force

L. S. FOWLER
LOUISE ALBERT
ERNESTINE BOINEAU
SARA J. TERRY
MARY BURNS

Matrons

MRS. E. C. BEAMAN
MISS NORA CONE
MRS. A. J. KISER
MRS. L. A. KEY
MRS. OLIVE H. LUCAS
MRS. MARTHA CHRISTIAN
MRS. M. M. MARTIN
MRS. J. M. BATES

Housekeepers

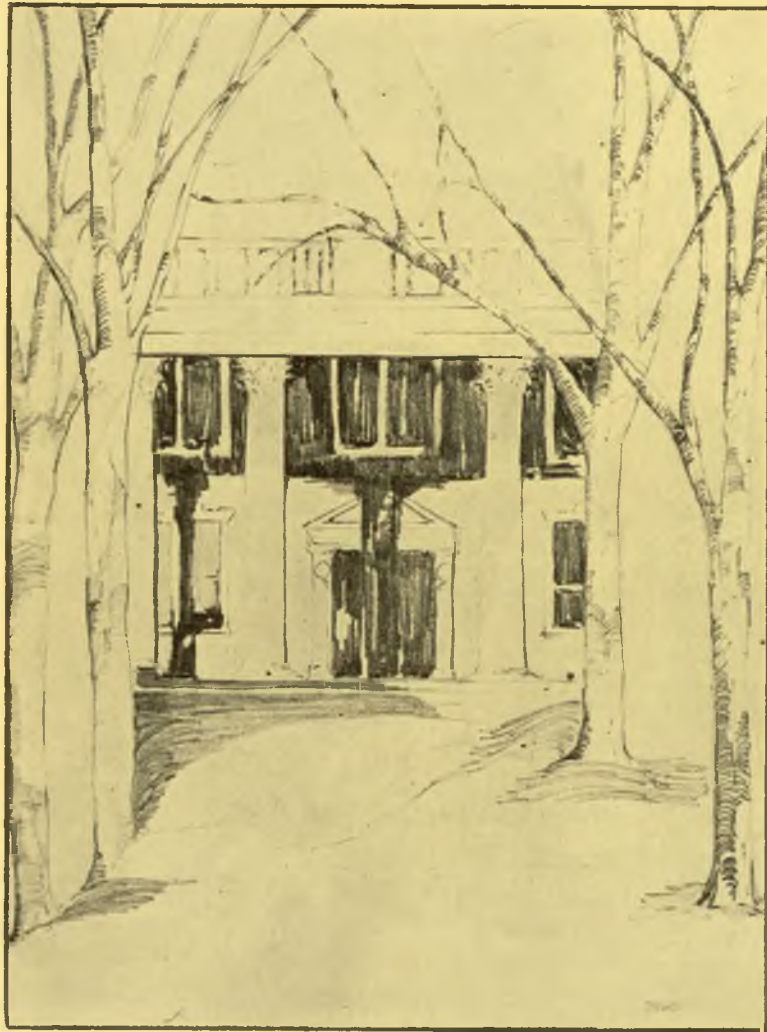
MRS. J. M. HALL
MRS. EFFIE PIERATT

Parks Memorial Hospital

DR. T. M. HALL
ELIZABETH THOMAS,
Head Nurse

Librarian

GERTRUDE ANDERSON



CLASSES

S
E
N
I
O
R
S



Senior Class Officers

CLEO JENKINS, A.B. . . . *President*
Hilltonia, Ga.

Sophomore Commission, 2; President Dormitory, 4; Vice-President Dormitory, 3; Y. W. C. A. Cabinet, 2, 3, 4; President of Class, 2, 3, 4; History Club, 2, 3, 4; Mathematics Club, 2, 3, 4; Colonnade Staff, 2, 3, 4; Field Day, 1, 2, 3; Tennis Club, 1, 2, 3; Who's Who, 4; President Bible Study Class, 2, 3; French Club, 3, 4.

CAROLINE CHENEY, B.S. . . *Vice-President*
Carrollton, Ga.

Freshman Council, 1; Field Day, 1, 2, 3, 4; Class Treasurer, 1, 2; Student Assistant, 3, 4; Dormitory Assistant, 3, 4; Who's Who, 4; Miss G. S. C. W., 4; Vice-President Y. W. C. A., 4; Colonnade Staff, 1, 2, 3; Corinthian Staff, 3; SPECTRUM Staff, 1, 2, 3, 4; President of Health Club, 3, 4; Vice-President Class, 4; Dramatics Committee, 2; Y. W. C. A. Cabinet, 2, 4; Literary Guild, 3; Tennis Club, 3, 4.

DOROTHY PARK, B.S. . . . *Secretary*
LaGrange, Ga.

Field Day, 1, 2, 3, 4; Cheer Leader, 3; Glee Club, 3, 4; Vice-President Glee Club, 4; Associate Editor Junior Edition "Colonnade," 3; Y. W. C. A. Cabinet, 4; Y. W. C. A. Executive, 4; Secretary Senior Class, 4; Dormitory Assistant, 4; "Cinderella Now and Then," 2; Usher, 4; Literary Guild, 3, 4; Chairman Social Committee Literary Guild, 3.

DORIS WATKINS, A.B. . . . *Treasurer*
Fitzgerald, Ga.

Treasurer Class, 1; Freshman Council, 1; Dormitory Office, 1; Summer School, 1; Secretary Class, 1; President English Sophomore Club, 2; SPECTRUM Staff, 2, 3; Colonnade Staff, 2, 3; President Sophomore Commission, 2; Sophomore Glee Club, 2; Y. W. C. A. Cabinet, 2; Summer School, 2; Treasurer Class, 3; Secretary and Treasurer Literary Guild, 3; History Club, 3; French Club, 3; Dramatic Committee, 3.



I like lots of girls at G.S.C. but I believe the warmest spot in my heart is reserved for all of you who were Freshmen in '25! Wasn't that a great class?
Caroline

ERA ALDERMAN, B.S.
Statesboro, Ga.

Y. W. C. A. Membership Committee, 2; Finance Committee, 3; Field Day, 4; Y. W. C. A. Social Service Committee, 5; Home Economics Club.



LOUISE ANDERSON, A.B.
Macon, Ga.

Correspondent to Macon Telegraph, 2, 3, 4; Corresponding Secretary of Lanier Club, 1, 2; Vice-President Lanier Club, 3, 4; English Sophomore Club, 2; Cast of "Stop Thief," 3; History Club, 4; Literary Guild, 4.



DOROTHY BANKS, A.B.
Milledgeville, Ga.

Baldwin County Club, 2, 3, 4; Glee Club, 3, 4; French Club, 4; Vice-President Town Girls, 1.



MARY BETH BARNETT, B.S.
Cave Springs, Ga.

Home Economics Club, 4; Vice-President Science Club, 4; Vice-President Bible Study Class, 4; Student Assistant Household Science Department, 4.



MABLE BERNHART, B.S.
Atlanta, Ga.

Atlanta Club, 1, 2, 3, 4; Home Economics Club, 1, 2; Social Committee, 1, 2.



Ethel, honey,
 please, wherever
 you go
 don't forget
 me cause
 you'll never
 know how
 much I've
 enjoyed knowing
 you and being
 with you -
 if you ever
 get a chance
 to come on
 home please do -
 love you
 Ethel



SARA BLOUNT, B.S.

Waynesboro, Ga.

Health Club, 3, 4; Field Day, 3; Science Club, 4.

ELEANOR BRANNEN, B.S.

Milledgeville, Ga.

President Town Girls, 1, 2; Baldwin County Club, 2, 3, 4; Summer School, 1927, 1928; Fowler's Follies, 3; History Club, 4; Student Assistant, 3, 4.

MARY CARSON, A.B.

Union Point, Ga.

Field Day, 1; Y. W. C. A. Morning Watch Committee, 2; Literary Guild, 3; Greensboro Club, 3; Y. W. C. A. World Fellowship Committee, 3, 4; Home Economics Club, 4; Treasurer Bible Study Class, 4.

CLARA CARSWELL, B.S.

Gordon, Ga.

Tennis Club, 1, 2; Field Day, 1, 2, 3; History Club, 2, 3; Bible Study Committee, Y. W. C. A., 3; Baseball, 1, 2, 3; Parlor Tricks, 3.

MARY CASTIGNINO

Savannah, Ga.

Glee Club, 2, 3, 4; Fowler's Follies, 3; Y. W. C. A. Choir, 4; Y. W. C. A. Conference and Conventions Committee, 4; Health Club, 4.

MARIE CHASTAIN, B.S.
Lakemont, Ga.

Tennis Club, 2, 3; Home Economics Club, 1, 2, 3; Baseball, 1.

FRANCES CHRISTIE, A.B.
Decatur, Ga.

Freshman Council, 1; Field Day, 1, 2, 3, 4; French Club, 3, 4; English Sophomore Club, 2; Y. W. C. A. Program Committee, 1; Y. W. C. A. Cabinet Committee, 4; Undergraduate Representative, 4; Corinthian Staff, 3; SPECTRUM Staff, 3, 4; Business Manager SPECTRUM, 4; Literary Guild, 3; Bible Study Teacher, 4; President Dormitory, 4; Student Volunteer Conference, 1; Blue Ridge, 1; Glee Club, 2, 3, 4; Vice-President Glee Club, 3; Who's Who, 4.

FLORENCE COBB
Eastman, Ga.

History Club, 3, 4; Literary Guild, 3, 4.

DOROTHY COLQUITT, A.B.
Geneva, Ga.

Glee Club, 2, 3; Baseball, 1, 2; Tennis, 1, 2, 3; Sophomore Commission, 2; Vice-President Columbus Club, 2; Field Day, 1, 2, 3; Basket-ball, 3; "Beauty and Jacobin" Cast, 2; Literary Guild, 3; Dormitory Assistant, 3; Program Committee, Y. W. C. A., 3; Y. W. C. A. Choir, 1, 2, 3.

NELL COMBS, B.S.
Locust Grove, Ga.

Y. W. C. A. Poster Committee, 2; Home Economics Club, 2; Tennis Club, 1; Literary Guild, 4; Who's Who, 4.





MARY FRANCES COWAN, B.S.

Conyers, Ga.

Colonnade Boosters' Club, 1; Tennis Club, 1; Field Day, 1, 2; Y. W. C. A. Membership Committee, 2; Treasurer Bible Study Class, 3; Y. W. C. A. World Fellowship Committee, 4; Literary Guild Club, 3, 4; Y. W. C. A. Cabinet, 4; Chairman Y. W. C. A. Alumnae Committee, 4; Health Club, 3; Dormitory Assistant, 4; Alumnae Editor, Y. W. C. A. Edition Colonnade, 4.

MONTEZ CRAWFORD, B.S.

Ellijay, Ga.

Tennis Club, 1, 2; Field Day, 1, 2, 3, 4; Y. W. C. A. Poster Committee, 2; Summer School, '27, '28; Baseball, 1, 2, 3; Fowler's Follies, '28; Jolly Strummers, 2; Assistant in Registrar's Office, 1927-'28, 1928-'29.

CARRIE FRANK CRUTE

Macon, Ga.

Y. W. C. A. Morning Watch Committee, 1, 2; Treasurer of Dormitory, 2; Y. W. C. A. World Fellowship Committee, 3, 4; President of Bible Study Class, 2; English Sophomore Club, 2; Literary Guild, 3, 4; Lanier Club, 3, 4; Assistant in Mansion Dining Hall, 4.

GRACE DANCER, B.S.

Colquitt, Ga.

Y. W. C. A. World Fellowship Committee, 2, 3, 4; Science Club, 3; Summer School, '27.

CARRIE NEAL DORRAH, A.B.

Pine Log, Ga.

MARY DORRAH, A.B.
Pine Log, Ga.



LUCILE DUNAWAY, B.S.
Milledgeville, Ga.

Home Economics, 1, 2; Baldwin County Club,
3, 4.



MARJORIE DUNAWAY, B.S.
Milledgeville, Ga.

Home Economics Club, 1, 2; Baldwin County
Club, 3, 4.



NELLIE FISHER, B.S.
McDonough, Ga.

Field Day, 1; Y. W. C. A. Dramatic Committee,
3; Y. W. C. A. Alumnae Committee, 4; Literary
Guild, 3, 4; Health Club, 4.



LUDWINA GARRETT, B.S.
Sparta, Ga.

Home Economics Club, 1, 2, 3, 4; Science Club,
3, 4; Y. W. C. A. Home Service Committee, 2;
Y. W. C. A. Social Committee, 3; Dormitory As-
sistant, 4; Y. W. C. A. Program Committee, 4.



*I've enjoyed
knowing you
these days,
and I think
you're a real sweet little
girl. I wish you
the best of
luck and
don't dare
forget
me.*



NORA GASTON, B.S.

Americus, Ga.

History Club, 4; Secretary of Bible Study Class, 4; Basket-ball, 4; Baseball, 4.

LARA LEE GIBSON, A.B.

Louisville, Ga.

Colonnade Boosters' Club, 1; Sophomore Commission, 2; President Bible Study Class, 2; Secretary Class, 2; French Club, 2, 3, 4; Y. W. C. A. Cabinet, 3, 4; Chairman Missionary Education Committee, 3; Vice-President Dormitory, 3; Vice-President Bible Study Class, 3; History Club, 3, 4; Bible Study Teacher, 4.

MARY BELL GILSTRAP, A.B.

Milledgeville, Ga.

Health Club, 3, 4; Baldwin County Club, 3, 4; Glee Club, 2; Field Day, 1, 2.

THELMA GOODING, B.S.

Macon, Ga.

History Club, 2, 3; Science Club, 2, 3; Lanier Club, 2, 3; Conference Committee, 3; Orchestra, 2; Basket-ball, 3.

DELTA GRANT, A.B.

Helena, Ga.

French Club, 4; Literary Guild, 4; Treasurer Bible Study Class, 3; Y. W. C. A. World Fellowship Committee, 4.

BLANCHE GREEN, B.S.
Meriwether, Ga.

Baseball Team, 1, 2, 3; Captain Baseball Team, 2; Basket-ball, 2, 3; Field Day, 1, 2, 3; Tennis Club, 1, 2, 3; Science Club, 2, 3; Baldwin County Club, 2, 3; Sophomore Commission, 2; President Bible Study Class, 2.

CLARA GREGG, A.B.
Manchester, Ga.

President Bible Study Class, 1; Tennis Club, 2; Treasurer Bible Study Class, 2; French Club, 2, 3; Treasurer French Club, 3; Y. W. C. A. World Fellowship Committee, 3; Y. W. C. A. Poster Committee, 3; President Mathematics Club, 3.

ELIZABETH GWINN, B.S.
Conyers, Ga.

French Club, 1, 2; Science Club, 3, 4; Y. W. C. A. Membership Committee, 2; Y. W. C. A. World Fellowship Committee, 3; Y. W. C. A. Alumnae Committee, 4; Student Assistant, 4; Dormitory President, 4; President Science Club, 4.

LUCIE HARDING, B.S.
Milledgeville, Ga.

Class Historian, 2; Secretary Town Girls, 2; Baldwin County Club, 1, 2, 3, 4; English, 2; Sophomore Club; Glee Club, 4.

GENEVIEVE HARGROVE, A.B.
McDonough, Ga.

French Club, 2, 3, 4; Literary Guild, 4; History Club, 2, 3; Tennis Club, 1; Y. W. C. A. Membership Committee, 2; Y. W. C. A. World Fellowship Committee, 4.



Ethel I didn't even know you until this year but I like you lots - Here's wishing you plenty success - Love, Ethel Green



KATHRYN HARRIS, B.S.

Americus, Ga.

Feature Editor Colonnade, 4; Advertising Manager SPECTRUM, 4; Y. W. C. A. Dramatic Committee, 3; Y. W. C. A. World Fellowship Committee, 4; Vice-President Bible Study Class, 2; President History Club, 4; Science Club, 4; Tennis Club, 3; Literary Guild, 4; President Americus Club, 4; Y. W. C. A. Choir, 2; Basket-ball, 3, 4; Baseball, 2; Field Day, 3, 4; Fowler's Follies, 3; Junior Play, 3; "Case of Suspension" Cast, 4; Who's Who, 4; Vice-President of Class, 4.

NANCY HEARD, B.S.

Washington, Ga.

Baseball, 1, 2, 3, 4; Basket-ball, 3, 4; Field Day, 1, 2, 3, 4; Y. W. C. A. Choir, 4; Glee Club, 3, 4; History Club, 3, 4; Tennis Club, 1; Jolly Strummers, 3; Y. W. C. A. Program Committee, 4; "Parlor" Cast, 4.

ELIZABETH HEARN, A.B.

Eatonton, Ga.

President Dormitory, 1; Sophomore Commission, 2; French Club, 2, 3, 4.

ETHEL HERRING, B.S.

Thomasville, Ga.

Y. W. C. A. Alumnae Committee, 2, 3; Y. W. C. A. Conference and Convention Committee, 4; Field Day, 3, 4; Tennis Club, 1, 2, 3, 4; Health Club, 4.

FRANCES HOLMES, B.S.

Woodbury, Ga.

Freshman Council, 1; Y. W. C. A. World Fellowship Committee, 2, 4; Vice-President Meriwether Club, 4; Health Club, 3, 4.

MARY HOUSER, A.B.

Scott, Ga.

Y. W. C. A. Choir Summer School, 1; Field Day Summer School, 1; Y. W. C. A. Morning Watch Committee Summer School, 1, 2; Y. W. C. A. Membership Committee, 2; Y. W. C. A. Infirmary Committee, 3; Literary Guild, 3, 4; Home Economics Club, 2, 3.



LOUISE HUMPHREY, B.S.

Milledgeville, Ga.



EDITH IVEY, B.S.

Milledgeville, Ga.

Tennis Club, 1, 2; Literary Guild, 3, 4; History Club, 3; Circulation Manager "Colonnade," 2; Baldwin County Club, 3, 4; Cast "Stop Thief," 3; Corinthian Staff Summer School, '28; Cast "A Case of Suspension," '28; Editor-in-Chief "Colonnade," 4; World Fellowship Committee, 4; Summer School, 2, 3; Mercer Summer School, '28.



VIOLA JAMES, A.B.

Fitzgerald, Ga.

Summer School, '26, '27; French Club, 1, 3; Field Day, 1; Y. W. C. A. Morning Watch Committee, 2; History Club, 2, 3; Y. W. C. A. Social Service Committee, 3.

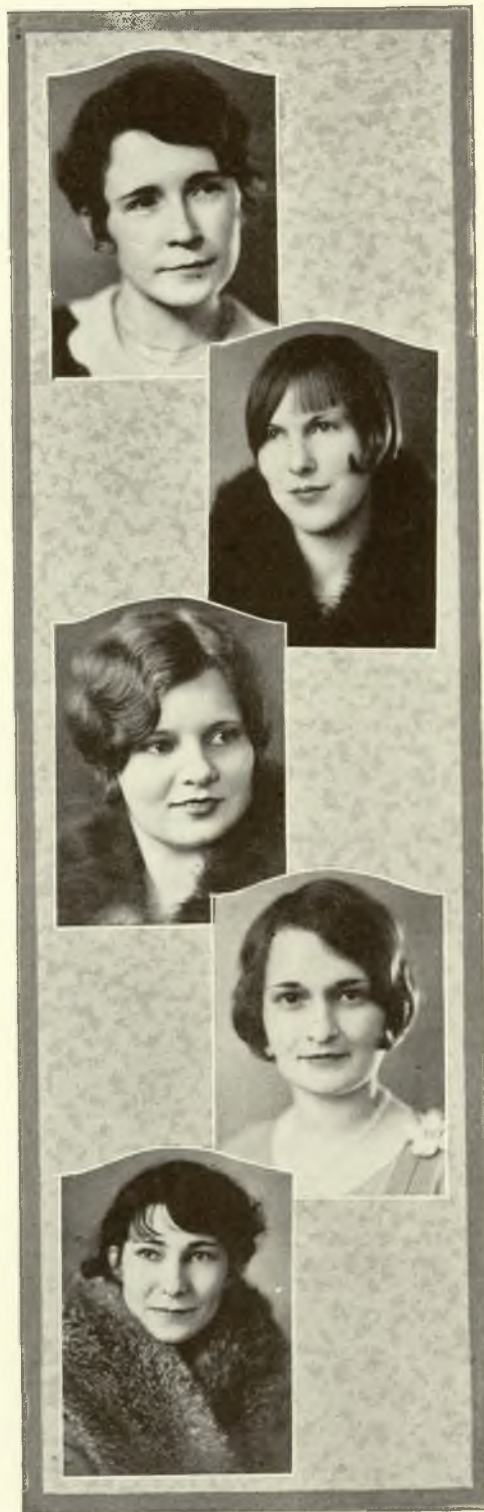


THELMA JOHNSON, A.B.

Dexter, Ga.

Tennis Club, 1; Y. W. C. A. Morning Watch Committee, 2; Y. W. C. A. World Fellowship Committee, 3; Summer School, '26, '27, '28; Y. W. C. A. Social Committee, 3; Cast of "The Arrival of Kitty," 3; Literary Guild, 3.





WILLINE JOLLEY, B.S.

Fitzgerald, Ga.

Secretary and Treasurer of Dormitory, 1; Tennis Club, 1, 2; Sophomore Commission, 2; Home Economics Club, 2, 3; Treasurer Home Economics Club, 3; Summer School, 1, 2; Y. W. C. A. Dramatic Committee, 3; Field Day, 1, 2; Fowler's Follies, 2.

VELMA KEMP, A.B.

Statesboro, Ga.

French Club, 1, 2, 3; Mathematics Club, 2; Vice-President of Mathematics Club, 3; Summer School, '27, '28; Y. W. C. A. Conference and Convention Committee, 3.

MARION LAINE, A.B.

Dry Branch, Ga.

History Club, 4; French Club, 3, 4; Literary Guild, 3, 4; Vice-President French Club, 3; Vice-President Bible Study Class, 2; Y. W. C. A. World Fellowship Committee, 4; Dormitory President, 4; Dormitory Assistant, 4.

ELLIE RUTH LEWIS, A.B.

Thomson, Ga.

Freshman Council, 1; Sophomore Commission, 2; Y. W. C. A. Home Service Committee, 2; Field Day, 2, 3; Literary Guild, 3; Tennis Club, 2; French Club, 3; Summer School, 1, 2; Fowler's Follies, 2.

DOROTHY LITTLE, A.B.

Crawford, Ga.

Treasurer Dormitory, 1; Tennis Club, 1, 2, 3, 4; College Tennis Championship, 1, 2, 3; Morning Watch, 1; Hiking Club, 1, 2; Vice-President Tennis Club, 2; Captain Baseball, 2, 3; Captain Basket-ball, 3, 4; Field Day, 1, 2, 3; Sophomore Commission, 2; World Fellowship Committee, 3; Dormitory Treasurer, 2; Athletic Committee, 3; Literary Guild, 3, 4; French Club, 3, 4; Secretary French Club, 4; Vice-President Dormitory, 3; Dormitory Assistant, 3; SPECTRUM Staff, 4; Social Committee, 4; Who's Who, 4.

MARIE LONG, B.S.

Atlanta, Ga.

Field Day, 1, 2, 4; Vice-President Bible Study Class, 2; Library Committee, 2; Secretary World Fellowship Committee, 4; Circulation Manager "Colonnade," 4; Reporter Health Club, 4; Social Committee Health Club, 4; Atlanta Club, 4; Literary Guild, 4; Literary Assistant, 4.

MARGARET LUMPKIN, A.B.

Crawford, Ga.

Freshman Council, 2; President Dormitory, 1, 2, 4; President Sophomore Commission, 2; Head of Religious Department of Y. W. C. A., 3; English Club, 2; Literary Guild, 3; President of Literary Guild, 4; Student Assistant in Grammar Department of Practice School, 3, 4; Dormitory Assistant, 2, 3, 4; Field Day, 1, 2, 3; Representative to Student Volunteer Conference, 2; Vice-President of Bible Study Class, 3; Bible Study Teacher, 4; Baseball, 3; Treasurer of SPECTRUM, 4.

RUTH MALLARD, A.B.

Statesboro, Ga.

Infirmary Committee, 2, 3; Social Service Committee, 4; French Club, 4.

MARY ELLA MAXWELL, B.S.

Danville, Ga.

Mathematics Club, 2, 4; Tennis Club, 2; Community Service Committee, 2; Science Club, 4; Social Committee, 4.

SALLIE RUTH MEADOWS, B.S.

Oxford, Ga.

Home Economics Club, 1, 2, 3, 4; Science Club, 3, 4; Baseball Team, 3; Secretary of Home Economics, 4; Bulletin Board Committee, 2; Membership Committee, 3; Program Committee, 4; Vice-President of Bible Study Class, 2; Dining Room Assistant, 4.





FRANCES MOORE, B.S.

Griffin, Ga.

Home Economics Club, 2, 3, 4; Membership Committee, 2; Morning Watch Committee, 1; Spalding County Club, 4.

JUANITA MOORE, B.S.

Sparta, Ga.

Tennis Club, 2; Home Economics Club, 2, 3, 4; Glee Club, 2, 3; Science Club, 2, 3, 4; Finance Committee, 2; Jolly Strummers, 1, 2.

FRANCES MORGAN, A.B.

Columbus, Ga.

Tennis Club, 1; Secretary and Treasurer English Club, 2; Decoration Committee, 2; Literary Guild, 3; French Club, 3; President Spanish Club, 3; Dramatic Committee, 3; Columbus Club, 2.

MYRTLE MORRIS, B.S.

Tazewell, Ga.

MARGARET MORSE, B.S.

Columbus, Ga.

Home Economics Club, 3, 4; Science Club, 3, 4.

JULIA MUSE, A.B.
Covington, Ga.

Literary Guild, 3, 4; History Club, 3, 4; Tennis Club, 2, 3; French Club, 4; Field Day, 2, 3.

INEZ MCARTHUR, B.S.
Dalton, Ga.

Home Economics Club, 1, 2, 3; Tennis Club, 1, 2; Baseball, 1; Basket-ball, 1.

KATHERINE MCCRACKEN, A.B.
Baxley, Ga.

Tennis Club, 1, 2.

ELISE MCCRARY, B.S.
Roberta, Ga.

Treasurer Dormitory, 1; Sophomore Commission, 2; Membership Committee, 2; Literary Guild, 3, 4; English Sophomore Club, 2; History Club, 3, 4; Home Economics Club, 1, 2; Field Day, 1, 2, 3; Tennis Club, 3, 4; Social Committee, 4; French Club, 4; Who's Who, 4.

VIVIAN MCLENDON, B.S.
Dawson, Ga.

Home Economics Club, 1, 2; Vice-President, 3; President, 4; Student Assistant, 3, 4; Science Club, 3, 4; Tennis Club, 3, 4; Dining Room Assistant, 3, 4; Bulletin Board Committee, 2; Conference and Convention Committee, 3; Vice-President Y. W. C. A. Summer School, '28; "Stop Thief" Cast, 3.



Best wishes
 always for
 your success
 and happiness.
 Sincerely,
 Gladys



GLADYS MCMICHAEL, B.S.

Buena Vista, Ga.

Freshman Council, 1; Colonnade Boosters' Club, 1; Secretary of Bible Study Class, 1; Y. W. C. A. Cabinet, 2; President English Club, 2; Glee Club, 2, 3, 4; Chairman Infirmary Committee, 2; Y. W. C. A. Choir, 2, 3, 4; Student Assistant in English Department of Practice School, 3, 4; Library Assistant, 3; President Literary Guild, 3; Associate Editor of "Corinthian," 2; Literary Guild, 4; Vice-President of Dormitory, 3; Editor-in-Chief "Corinthian," 4; Cast of "Cinderella Now and Then," 2; Lyceum Committee, 1, 2, 3.

LAURA NEELY, B.S.

College Park, Ga.

Membership Committee, 2; Atlanta Club, 1, 2, 4; Home Economics Club, 4; Dramatic Committee, 4.

AUGHTRY OLIVER, A.B.

Birmingham, Ala.

Art Editor SPECTRUM, 3; Orchestra, 1, 2, 3; President Orchestra, 2; Field Day, 1, 2, 3; Literary Guild, 2, 3; French Club, 3; History Club, 3; Circulation Manager Junior Edition "Colonnade," 2; Glee Club, 2, 3; Summer School, '27; Tennis Club, 2; Girl Reserve Club, 3; Y. W. C. A. Cabinet Summer School, '27; Dramatic Committee, 2; Membership Committee, 2; Social Committee, 3; Birmingham Southern Summer School, '28; Y. W. C. A. Choir, 2, 3; Business Manager Y. W. C. A. Edition "Colonnade," 3; "Cupid at Vassar," 1; "Stop Thief," 2; Violin Committee, 1.

DOROTHY PARKS, B.S.

Milledgeville, Ga.

President of Class, 1; Secretary Bible Study Class, 1; Secretary and Treasurer of Dormitory, 1; Tennis Club, 1; Orchestra, 1, 2, 3; Freshman Council, 1; Y. W. C. A. Cabinet, 2; Treasurer Sophomore Glee Club, 2; President Town Girls, 2; Business Manager "Colonnade," 3; Literary Guild, 3; Science Club, 3; President Baldwin County Club, 3.

ROBERTA PARRIS, A.B.

Stone Mountain, Ga.

President French Club, 4; Secretary Dormitory, 1; Secretary Atlanta Club, 1; President Atlanta Club, 3, 4; Morning Watch Committee, 3.

MARTHA PENICK, A.B.

Madison, Ga.

Treasurer Dormitory, 2; French Club, 4.



MARY POOLE, A.B.

Washington, Ga.

Tennis Club, 1; French Club, 2, 3, 4; History Club, 4; Literary Guild, 4; Bulletin Board Committee, 3; Summer School, '26, '27.



MARY RABY, B.S.

Macon, Ga.

President Dormitory, 1; English Sophomore Club, 2; Literary Guild, 2, 3, 4; History Club, 2, 3; Tennis Club, 2, 3; Basket-ball, 2, 3, 4; Field Day, 2, 3; President Lanier Club, 2, 3, 4; Sophomore Commission, 2; Y. W. C. A. Cabinet, 3; Executive Social Department, 4; Glee Club, 2, 3, 4.



MARTHA RAUCH, B.S.

Dawson, Ga.

Infirmary Committee, 1, 2; Social Service Committee, 4; Field Day, 3; Literary Guild, 4.



ELIZABETH REESE, B.S.

Newnan, Ga.

Field Day, 1, 2, 3; Student Assistant, 3, 4; History Club, 3, 4; Literary Guild, 3, 4; Fowler's Follies, Summer School, '27, '28.





LOUISE REEVES, B.S.

Americus, Ga.

Tennis Club, 2, 3; History Club, 3, 4; Treasurer History Club, 4; Mathematics Club, 3, 4; Treasurer Mathematics Club, 4; Vice-President Americus Club, 4; Student Assistant, 3, 4; Social Service Committee, 4; Staff Senior Edition "Colonnade," 4.

RUTH ROARK, A.B.

Clermont, Ga.

World Fellowship Committee, 3; Social Service Committee, 4; Jolly Strummers, 1, 2; Orchestra, 1; Tennis Club, 1, 2; History Club, 3, 4; French Club, 3, 4.

MARY ROBINSON, A.B.

Quincy, Fla.

Vice-President Dormitory, 2; Finance Committee, 2; Literary Guild, 4; French Club, 4; Assistant Editor "Corinthian," 4; Social Service Committee, 4.

FLORENCE ROGERS, A. B.

Sandersville, Ga.

Jolly Strummers, 1; English Sophomore Club, 2; Glee Club, 2; President Glee Club, 3, 4; Class Song Leader, 3, 4; Junior Edition Colonnade Staff, 3; Cast Junior Class Play, 3; Chairman Entertainment Committee Junior-Senior Prom, 3; Councilor at Girl Scout Camp, '28; President Sandersville Club, 4; Chairman Program Committee French Club, 4; Managing Editor Journalism Edition of Union Recorder, 4; Editor-in-Chief Y. W. C. A. Edition "Colonnade," 4; Local Editor SPECTRUM, 4; Who's Who, 4.

MAE ROSS, A.B.

Macon, Ga.

French Club, 1, 2, 3; Lanier Club, 1, 2, 3; History Club, 3; Literary Guild, 3; Girl Reserves, 3; Social Service Committee, 3.

ANNIE LAURIE RUSH, B.S.

Rome, Ga.

Temperance Committee, 2; Field Day, 1, 2; Library Assistant, 2, 4; Summer School, '27, '28; Bible Study Committee, 4; Literary Guild, 4; French Club, 4; Chairman Drama Group, 4.



ESSIE BELLE RUSSELL, B.S.

Montezuma, Ga.

Treasurer Y. W. C. A., 2; Head Finance Committee, 2; Dormitory Officer, 2; Alumnae Editor "Corinthian," 4; Officer Literary Guild, 4; Editor-in-Chief Senior Edition of "Colonnade," 4.



FAYE SESSIONS, A.B.

Sumner, Ga.

Vice-President Freshman Council, 1; President of Bible Study Class, 1, 2, 4; Dormitory President, 1, 2; Morning Watch Committee, 1; Secretary Student Volunteer Group, 1, 2; Treasurer of Class, 2; Y. W. C. A. Cabinet, 2, 3; President of Y. W. C. A., 4; History Club, 2, 4; Dormitory Treasurer, 3; Vice-President History Club, 3; Editor Student Volunteer News-Letter, 3; Council Member of Georgia State Volunteer Union, 4.



CHARLOTTE SHELLNUTT, A.B.

Allentown, Ga.

Jolly Strummers, 1, 2; Social Committee, 2; Membership Committee, 3; French Club, 3; Literary Guild, 3, 4; Health Club, 4; Social Service Committee, 4; Dormitory Assistant, 4.



EMILY SHEPPARD, B.S.

Fort Valley, Ga.

President Bible Study, 1; Glee Club, 2; Choir, 2; Morning Watch Committee, 2; Y. W. C. A. Cabinet Summer School, '28; Literary Guild, 3; French Club, 3; Program Committee, 3.





PAULINE SIGMAN, B.S.
Savannah, Ga.

Dormitory President, 1; W. C. T. U. Conference, 2; Tennis Club, 1, 2; Freshman Council, 1; Follies, 1; Field Day, 1, 2, 3; Science Club, 2, 3; Home Economics Club, 1, 2, 3; Basket-ball, 2, 3; Colonnade Staff, 3; SPECTRUM Staff, 2, 3; Senior Glee Club, 3; Y. W. C. A. Cabinet, 2, 3; Chairman Choir Committee, 2; Chairman Program Committee, 3; "Hallucinations," 3; Dormitory Assistant, 3.

ANNIE C. SMITH, B.S.
Odessadale, Ga.

Freshman Council, 1; Decoration Committee, 2, 3; Science Club, 4; Conference and Convention Committee, 4.

ORION SMITH, B.S.
Bowdon, Ga.

History Club, 3, 4; Health Club, 3, 4; Tennis Club, 1, 2; Bowdon State College, 1, 2.

ELSIE SPEARS, A.B.
Jeffersonville, Ga.

World Fellowship Committee, 3; Literary Guild, 2, 3; French Club, 2; Vice-President, 3; Junior Edition Colonnade Staff, 2; Tennis Club, 1, 2; Basket-ball, 3; History Club, 2, 3; Summer School, 2, 3.

LOUISE STANFORD, A.B.
Pavo, Ga.

Social Committee Bible Study Class, 1, 2; Secretary Bible Study Class, 3; History Club, 2, 3, 4; Literary Guild, 3, 4; Corinthian Staff, 4; Y. W. C. A. Cabinet, 4; World Fellowship Committee, 3, 4.

MARY LOU STEPHENS, B.S.
Rome, Ga.

President Bible Study Class, 1; World Fellowship Committee, 4; Social Service Committee, 2, 3; Chairman Bible Study Class, 4; Literary Guild, 4; Science Club, 4; Dormitory Assistant, 4; Summer School, 2, 3.

ZERAH STEPHENS, A.B.
Carrollton, Ga.

Program Committee, 1; Finance Committee, 1, 2, 3; Bible Study Treasurer, 4; Circulation Manager "Corinthian," 2; Secretary Literary Guild, Summer School; Literary Guild, 4; History Club, 2, 3, 4; French Club, 1, 2, 3, 4; Tennis Club, 1, 2, 3; Dormitory Assistant, 1; Field Day, 3.

ELISE STONE, B.S.
Atlanta, Ga.

Field Day, 1, 2, 3; Atlanta Club, 1, 2, 3, 4; Literary Guild, 3, 4; Health Club, 3, 4; Secretary Bible Study Class, 2; World Fellowship Committee, 1, 2, 3; Alumnae Committee, 4.

ELIZABETH STOVALL, B.S.
Fitzgerald, Ga.

Field Day, 1, 2; Summer School; Science Club, 3, 4; History Club, 3, 4; Literary Guild, 4.

DOROTHY THAXTON, A.B.
Milledgeville, Ga.

Freshman Council, 1; President Town Girls, 1; Mathematics Club, 1, 2, 3; Science Club, 2, 3; Tennis Club, 2; Baldwin County Club, 2, 3; Treasurer Y. W. C. A., 3; Health Club, 3; Who's Who, 3.





MARIE TUCKER, A.B.
Sandersville, Ga.

Freshman Council; English Sophomore Club, 2; Vice-President Town Girls, 1; Tennis Club, 2; Dormitory Officer, 2, 3; Y. W. C. A. Choir, 3; Editor Y. W. C. A. Handbook, 3; Cast Junior Class Play, 3; Glee Club, 3, 4; "Cinderella Now and Then," 2; Dramatic Committee, 3; Social Committee, 3; Literary Guild, 3, 4; French Club, 3, 4; Bible Study Class Teacher, 4.

MRS. KATHERINE TUNNELL, B.S.
(Mrs. George H.)
Milledgeville, Ga.

New York Library School, 1908-09; Librarian G. S. C. W., 1906-10, 1918-19; Teacher Gordon Institute, 1910-12; Married, 1919; Resumed Studies G. S. C. W., 1928-29.

CHARLOTTE WALLACE, B.S.
Social Circle, Ga.

Poster Committee, 2; Membership Committee, 3, 4; Health Club, 3, 4; Field Day, 3.

KATHERINE WEAVER, A.B.
Griffin, Ga.

Sophomore Commission, 2; President Bible Study Class, 3, 4; President Dormitory, 4; President Griffin Club, 4.

MATTIE BELLE WEST, B.S.
Sandersville, Ga.

Tennis Club, 1, 2; Bulletin Board Committee, 2; Literary Guild, 4; Health Club, 4; Vice-President Sandersville Club, 4; Conference and Convention Committee, 4.

Ethel - no need to say that I have enjoyed spending your cause while at school a lot these four years. I'm wishing you much success and happiness in the future.
*Much love,
Mattie Belle!*

FLORINE WILLIAMS, B.S.

Ty Ty, Ga.

History Club, 4; World Fellowship Committee, 4;
Bulletin Board Committee, 4; Field Day, 4; Y. W.
C. A. Choir, 4; Literary Guild, 4.

MARY WILLIAMS, B.S.

Grantville, Ga.

Health Club, 3, 4; Science Club, 4; Dramatic
Committee, 2; Finance Committee, 3; Membership
Committee, 4.

MARY EVELYN WILSON, A.B.

Milledgeville, Ga.

Field Day, 2; Baldwin County Club, 1, 2, 3;
Health Club, 2, 3.

RUTH WRIGHT, B.S.

College Park, Ga.

Atlanta Club, 2, 3, 4; Science Club, 3, 4; French
Club, 2, 3; Tennis Club, 2.

CHRISTINE WYNNE, A.B.

Chester, Ga.

Tennis Club, 2, 3; Literary Guild, 4; French Club,
2, 3, 4; Dramatic Committee, 4.



Senior Class Song

Our childhood days are over
And we've begun anew
To travel on the journey farther
To knowledge that is new.
The things of tomorrow
Depend on what we do.
We're striving forever
To hold the standard true.

CHORUS

We're just the Senior Class at G. S. C.
We're striving hard to gain a victory,
Here on our campus we will do our best
For dear old G. S. C.
When Senior class of '29 comes to bid adieu to you
We hope that all can say with hearts glad and spirits gay
That class was true.

And now at our college,
We're learning every day
That we can always be happy
At work or at our play.
We love you, our college,
With standards so high,
To keep them, Alma Mater,
We always shall try.

J
U
N
I
O
R
S



Junior Class Officers



DOROTHY JAY Fitzgerald, Ga.
President



IRMA VAUGHAN Cartersville, Ga.
Vice-President



AUSTELLE ADAMS Royston, Ga.
Secretary



ELEANOR PIPER Covington, Ga.
Treasurer

SARAH ALLEY Nacoochee, Ga.

ADDIE ATWOOD Darien, Ga.

WILLIE BAKER Nelson, Ga.

MARY BATTLE Ellaville, Ga.

THELMA BEALL Abbeville, Ga.

MARY BOHANNAN Newnan, Ga.

EDITH BOWDEN Augusta, Ga.

JOSEPHINE BRANTLEY Lyons, Ga.

ANNIE SARA BROOKS McRae, Ga.

ANNE RIGHTON BROWN . Milledgeville, Ga.





SARA BRYANT Newnan, Ga.



MARGARET CANDLER Villa Rica, Ga.



LORICE CANNAFAX Zebulon, Ga.

CORNELIA CHAPPELL Portsmouth, Va.



LOUISE COBB Warthen, Ga.

IDOLENE COSBY Elberton, Ga.



CLARA MAE COWART Fair Mount, Ga.

MARGARET COYNE Atlanta, Ga.

RACHEL CREECH Camilla, Ga.

MARION CREEL Union City, Ga.

*Ethel - It's been
lots of fun know-
ing you this year
and I've learned
to like you just
heaps. If you go to
Mt. City this summer,
be sure and come
by to see me.
 Lovingly,
Idalema*

CLAUDIA CROCKETT . . . Waynesboro, Ga.

SPENCER DARDEN Newnan, Ga.

ALFRED IVERSON DEWS Decatur, Ga.

MILDRED DIAL Thomson, Ga.

DOROTHY DOWLING Moultrie, Ga.

KATHRYN DUGGAN Parrott, Ga.

ROSSIE MAE EATON Hawkinsville, Ga.

EMILY ECHOLS Stevens Pottery, Ga.

MARY ELLIOTT Norcross, Ga.

MARY FARMER Hephzibah, Ga.





IRENE FENN Rochelle, Ga.

PRISCILLA FORBES McDonough, Ga.

FRANCES FORDHAM Dublin, Ga.

REBECCA FOWLER Thomson, Ga.

ELIZABETH FRALEY Milledgeville, Ga.

LIZZIE MAE GAMMAGE . . . Americus, Ga.

ALMA GLADDIN McIntyre, Ga.

EUNICE GODLEY Woodbine, Ga.

LOUISE GREEN Hephzibah, Ga.

HELEN HAGAN Sylvania, Ga.

*Don't you
dare try to
forget
Kennis*

E. L. Green

NANADELYN HALL Moultrie, Ga.

LOUISE HAM Franklin, Ga.

DALE HAMRICK Americus, Ga.

ETHEL HARTLEY Bluffton, Ga.

FLORINE HATCHER Wrightsville, Ga.

KATHERINE HEMPHILL Griffin, Ga.

Well Ethel we started out together from 'years ago and just look where we are now. Who would have thought it. I surely have enjoyed travelling along with you & sitting with you this year. Don't forget me. Lucy

LUCY HEMPHILL Griffin, Ga.

LEILA R. HERMANN Sandersville, Ga.

*Ethel dear
It was through "Heallie" that I learned you. I don't know where "Heallie" taught me to love you or not but all the same I surely love you
You're a mighty fine and noble girl and I love you later
Success to your - yours
Beatrice Howard*

MARY HODGES Bluffton, Ga.

BEATRICE HOWARD Washington, Ga.



*Ethel,
We've had some sweet times together & I've enjoyed them. Let's don't forget about them. Kisses
Wishing you the best of luck in the future -
Kat.*



MARY LYNN HULL Acworth, Ga.

ELIZABETH JENNINGS Plains, Ga.

MADELYN JORDAN Whigham, Ga.

HARRIETT KIDD Newnan, Ga.

ANNICE LIPFORD Franklin, Ga.

LOIS LORD Toombsboro, Ga.

MYRTICE LYNCH Machen, Ga.

ROBERTINE MCCLENDON, Thomasville, Ga.

BERNICE MCCULLOUGH . Milledgeville, Ga.

MALLENE MCGAHEE Dearing, Ga.

FANNIE MCLELLAN Dalton, Ga.

BLANCHE MCLESKY Hartwell, Ga.

ELIZABETH MCMILLAN . . . LaGrange, Ga.

FRANCES C. MCMULLAN . . Jonesboro, Ga.

MILDRED MCWHORTER . . . Menlo, Ga.

BLANCHE MARSHALL . . . Reynolds, Ga.

MARY WARE MARTIN . . Milledgeville, Ga.

SARA MARTIN Branwood, Ga.

MILDRED MERRELL Newnan, Ga.

LOUISE MERRITT Atlanta, Ga.



*Oh, I
 have enjoyed
 knowing you
 the best friend
 I will always
 be a friend of
 Caroline*



MARY MITCHAM Durand, Ga.

EDDITH MONTGOMERY Woodbury, Ga.

LOUISE MORRIS Milledgeville, Ga.

ANNIE JOE MOYE Barnesville, Ga.

LOUISE NEAL Wrightsville, Ga.

MILDRED O'NEAL Greenville, Ga.

VIVIAN OUTLER Wrightsville, Ga.

VIRGINIA PINKERTON Eatonton, Ga.

JULIA REESE Eatonton, Ga.

SUE ROBERTS Social Circle, Ga.

*Please don't
forget all about
me after you
leave. In the
half. In the
we happened
along there
the sign
the*

DORCAS RUCKER Alpharetta, Ga.

JEWELL RUSSELL Montezuma, Ga.

MARY JULIA SASNETT Jackson, Ga.

MARIANNA SAVAGE Dublin, Ga.

EUGENIA SCROGGIN Sargent, Ga.

MYRTLE LOU SEARS Carrollton, Ga.

ROSA LEE SHANNON Dublin, Ga.

KATHLEEN SHEDD Jesup, Ga.

KATHERINE SHIVERS Moultrie, Ga.

DOLIA SINGLETON Dublin, Ga.



*Edith, I surely
have enjoyed having
you up here and hope
twice he will be able to see
each other when you
go home. Don't we
up when you
come to Moultrie.
Don't forget,
D. J. P.*



HAZEL SLOAN Moultrie, Ga.

MARION SPARROW Hawkinsville, Ga.

MYRTLE SPRATLIN Washington, Ga.

MARY E. SMITH Leesburg, Ga.

ELISE STANLEY Greensboro, Ga.

FORD STAPLES Roopville, Ga.

CAROLYN TIGNER Odessadale, Ga.

MARY VINSON Fort Valley, Ga.

FRANCES WILLIAMS Woodbury, Ga.

JOSEPHINE WILLIAMS Swainsboro, Ga.

LILLA WOOD Columbia, S. C.

Ethel,
you sure have been good to us taking
us on hikes & I'll never forget you. Remember
not to forget me & if you ever come to
Columbus come to see me

Jeanne Freeman
Columbus, Ga.

S
O
P
H
O
M
O
R
E
S

Sophomore Class Officers



CATHERINE JONES Augusta, Ga.
President



ELIZABETH STEWERT . . Milledgeville, Ga.
Vice-President



LEO JORDON Stone Mountain, Ga.
Secretary



ANN HICKS Rome, Ga.
Treasurer

EDITH MAYBELL ADKINS . . . Edison, Ga.

MYRTLE AGNEW Menlo, Ga.

ESSIE ALLIGOOD Cairo, Ga.



ADNA AMOS Butler, Ga.

BIRDIE K. ANDERSON Glenville, Ga.

MARIDEAN ANDERSON . . . Statesboro, Ga.



ELLEN ANSLEY Buena Vista, Ga.

HELEN CAROLINE ARNALL . . Senoia, Ga.

ETHLYN ARNOLD Rayle, Ga.



MARY LOU BARNHART Penfield, Ga.

MIRIAM ANN BARNETTE . . . Hampton, Ga.

LOUISE BARROW Reynolds, Ga.



BERTHA BART Savannah, Ga.

FLORENCE BARWICK . . . Sandersville, Ga.

MARTHA BASS Milledgeville, Ga.



*I've have enjoyed being
in y our class and I woull
have much woull y I
hadnt known you.
Please always remember me,
Bertha Bart.*



MAMIE ELISE BEALL . . . Eatonton, Ga.

IDA BLACK Covington, Ga.

SARA F. FLOODWORTH . . Milledgeville, Ga.

MARY ANN BOLTON . . . Bainbridge, Ga.

JULIA BOSWELL Talbotton, Ga.

EVA LOUISE BOWLES Gay, Ga.

NELLIE CLYDE BOYD . . . Stapleton, Ga.

ELISE BOYKIN Sylvania, Ga.

NEOLINE BOYKIN Sylvania, Ga.

EVELYN BRADSHAW Norwood, Ga.

ANNA E. BRIDGES . . . Sandersville, Ga.

LOIS LOUISE BRIGGS Meldrim, Ga.

LILLIAN L. BROWN Griffin, Ga.

LUCILE BROWN Sparta, Ga.

LUCILE BROWN Garfield, Ga.

NELL BROWN Woodbury, Ga.

VERA DELLE BROWN . . . Summerton, Ga.

CAROLYN BRUNSON Blakely, Ga.



DOROTHY L. BRYANT Lyerly, Ga.

KATHERINE BURNLEY . . . Thomson, Ga.

MILDRED BURT Camilla, Ga.



JEWEL BURTON Rome, Ga.

SARA CALLAHAN East Point, Ga.

SARA ELIZABETH CARR . . Warrenton, Ga.



EVELYN CARROLL Woodbury, Ga.

ROSE ELLEN CARTER Jackson, Ga.

LOUISE CHAMBLISS Moreland, Ga.



MAYE CHANDLER Woodstock, Ga.

EDITH CLANTON Hagan, Ga.

ISABEL CLIATT Lincolnton, Ga.



*Edith,
I'm so
glad I moved
up on school
I know so
much I could know
you. I've
enjoyed
knowing you
so much.
Love,
Laurie*

Ethel:
 members
 me to
 set at your
 table -
 want me
 get picture
 of your
 next year
 will think
 of see's St
 come to
 see her
 sometimes
 love
 come



- LOU ELLA COFFEE Douglas, Ga.
- IDELLE COLLINS Acworth, Ga.
- RACHEL CONE Barwick, Ga.

- GERTRUDE COOPER Augusta, Ga.
- CALLIE COUSINS Jonesboro, Ga.
- LUCILE CULBRETH Edison, Ga.

- BERTHA MAE CUNARD . . . Griffin, Ga.
- MARGARET CUNNINGHAM . . Decatur, Ga.
- MILDRED DAVENPORT . . Meriwether, Ga.

- MARTHA NELLE DAY . . Milledgeville, Ga.
- MARY DECK Dalton, Ga.
- CHRISTINE DEKLE Metter, Ga.

- DOROTHY DICKS Washington, Ga.
- SARA DICKSON Odel, Ga.
- EUCHLEASE DONALDSON . . Summit, Ga.

HILDA R. DONNAN Sumner, Ga.

MARY JULIA DOSTER Rochelle, Ga.

FRANCES DUNN Morgan, Ga.



HELEN DUNSON Commerce, Ga.

BILLY DURDEN Summit, Ga.

KATHARYN EDWARDS Columbus, Ga.



NORA ETHEL ENGLISH Griffin, Ga.

BESSIE ETHERIDGE Haines City, Fla.

JANE ETHERIDGE Jackson, Ga.



MINNIE FOKES Montezuma, Ga.

SUSANNAH FOSTER Jackson, Ga.

EMMA LOUISE FRANKS Sparta, Ga.



FLORENCE GILES Oxford, Ga.

GERTRUDE GILMORE McDonough, Ga.

SUE GLAUSIER Camilla, Ga.





FANNIE GOODRICH Milledgeville, Ga.

MARJORIE GRANT Rentz, Ga.

ALDA GREENE Lincolnton, Ga.

RUBY GREENE Gray, Ga.

GRACE M. GREGG Manchester, Ga.

PEARL HACKETT Macon, Ga.

LILL KATHERINE HAILEY . . Sarasota, Fla.

ANNIE LAURIE HALL Hatcher, Ga.

FRANCES MYRTLE HALL . Greensboro, Ga.

GLADYS HALL Bartow, Ga.

SALLYE HALL Milledgeville, Ga.

WILMA HALL Dublin, Ga.

FANNIE BERTHA HAMBY . Covington, Ga.

NAN HAMBY Clayton, Ga.

EVELYN HAMMETT Hogansville, Ga.

RUTH ELIZABETH HAMMOND . Blakely, Ga.

MYRTICE HANCOCK . . . Thomson, Ga.

SARA ALICE HANEY . . . Woodstock, Ga.



EMILY GLADYS HANNA . . Conyers, Ga.

HAZEL HARDEN Reidsville, Ga.

KATHLEEN HARLOW Hartford, Fla.



AVA A. HARPER Waycross, Ga.

MARTHA E. HARRIS . . . Fayetteville, Ga.

MARY HARRIS Manchester, Ga.



MARTHA ANN HARRISON . . Athens, Ga.

SARA ELIZABETH HARVEY . Monticello, Ga.

KATHLEEN HATCHER . . Waynesboro, Ga.



LUCILE HAYNES Tate, Ga.

RUTH HIGHTOWER Americus, Ga.

MAZIE HODGES Oconee, Ga.



*Called, I've enjoyed knowing you through all these years. I'll never forget our hours of struggle to get in World 20 and Constitution. Best wishes and love always
Linda*



*Ethel,
I'm hoping that you won't
forget the girls that sat next
to you in sociology your senior
year - take you into - Novine (Please don't
forget me by the picture)*

MARTHA HOGGARD Camilla, Ga.
REBECCA HOLBROOK Atlanta, Ga.

NOVINE HOLCOMBE Union Point, Ga.

HELEN HOLLOWAY Culloden, Ga.

HELEN HOLSBACK Gray, Ga.

EVELYN HUMPHREY Milledgeville, Ga.

MARY J. HURDLE Montezuma, Ga.

CAMILLA HUTCHINSON Moreland, Ga.

EDDIE INGRAM Sharpsburg, Ga.

ELIZABETH IVEY Lincolnton, Ga.

FRANCES JACKSON Culverton, Ga.

ELSIE JAMES Fitzgerald, Ga.

MARY JENKINS Dooling, Ga.

BERTHA JOHNSON Ellaville, Ga.

HELEN JOHNSON Marsberville, Ga.

RUBY JOHNSON Warrenton, Ga.

EDITH JOHNSTON Mansfield, Ga.

KATHERINE JONES Columbus, Ga.



HELEN ELIZABETH JONES Elberton, Ga.

MARY EVELYN JONES Americus, Ga.

LAURA ELLEN JORDAN Jonesboro, Ga.



NELLIE KELLEY Shady Dale, Ga.

ALVARETTA KENAN Statesboro, Ga.

OSCAR KERSH Atlanta, Ga.



MARY ATWOOD KITTLES Valona, Ga.

LORA MARGUERITE LAINE Bullard, Ga.

GRACE LANSDALE Harlem, Ga.



ANTOINETTE LAWRENCE, Milledgeville, Ga.

CLAUDINE LESTER Fayetteville, Ga.

RUTH LORD Jefferson, Ga.



*I've en-
joyed
knowing
near you
so much
and I've
learned
to like
you lots
Always
Evelyn*



LOUISE LOWE Carrs Station, Ga.

RUTH LOWE Carrs Station, Ga.

RUTH LOWTHER Ocilla, Ga.

EDITH MACKEN Sparta, Ga.

IDA POPE MAJORS Sparta, Ga.

NEDRA MANN Warm Springs, Ga.

FRANCES MATTHEWS . . Talbotton, Ga.

GLADYS A. MATTHEWS . . . Byron, Ga.

LOUISE MAYFIELD . . Milledgeville, Ga.

DOROTHY MAYO Hawkinsville, Ga.

VIRGINIA McALLISTER . . Fort Gaines, Ga.

HAZEL McARTHUR Dalton, Ga.

LOUISE McCARTHY . . White Plains, Ga.

ETIENNE McCRANIE . . Willacoochee, Ga.

RUTH McCRIMMON . . Mt. Vernon, Ga.

*Ethel, I surely have
 enjoyed knowing you
 this year. I only hope that
 the next time you will ask
 me to "play" with you.
 Love
 S. M. C. S.*

MARY LOU McDONALD Pearson, Ga.

SARA CAMERON MCGHEE . . . Dalton, Ga.

GRACE MCGILL Plains, Ga.

LOUISE MCKINNEY Blue Ridge, Ga.

RUTH McMICHAEL Jackson, Ga.

LOIS E. McWILLIAMS Dalton, Ga.

BILLY MEADERS Swainsboro, Ga.

ANNIE KATE MELTON Decatur, Ga.

GEORGIA MILLER Rocky Ford, Ga.

SARA BLANCHE MILLER . Rocky Ford, Ga.

SARA MARGARET MILLER . Gainesville, Ga.

ELIZABETH MILLIKIN Jesup, Ga.

KATHERINE MOORE Gay, Ga.

KATIE LOUVENIA MOORE . . . Gay, Ga.

MARY MOORE Montezuma, Ga.



*I haven't a
 picture in
 here but just
 to show you
 some of them
 I take this
 one for mine
 Don't forget
 Eva Lou M. C. S.
 Cartersville
 Ga.*



MARY ELLA MOORE Sparta, Ga.

FLORENCE MORGAN Rome, Ga.

LEONORA MORRIS Rocky Ford, Ga.

FRANCES MORTON Haddock, Ga.

REBECCA MORTON Gore, Ga.

FRANCES MYERS Summerville, Ga.

MARY E. NELSON McDonough, Ga.

CLAIRE NICKELS Blythe, Ga.

IRENE OSMENT Cartersville, Ga.

WILMA OWEN Blakely, Ga.

ADDIE PARKER Donalsonville, Ga.

MERLYN PARISH Pavo, Ga.

SARA PATRICK Griffin, Ga.

MARY SCOTT PHIPPS Lafayette, Ga.

AGNES PRESTON Newton, Ga.

FLOREID PRIDGEON Shellman, Ga.

JOSEPHINE PROCTOR . . Swainsboro, Ga.

SARA B. PROCTOR Dublin, Ga.



SARA FRANCES REEVES . . Americus, Ga.

EMILY ANNE RICE . . . Marshallville, Ga.

DORIS E. ROBERTS Blakley, Ga.



MARY LOUISE ROBERTS . . . Quincy, Ga.

VIRGINIA BROOKS Hephzibah, Ga.

LOUISE ROSS Oak Field, Ga.



JAMIE ROYSTON Royston, Ga.

CAROLINE RUSSELL Americus, Ga.

LILLIAN SAMS Dublin, Ga.



SYLVIA SATTERFIELD . Holly Springs, Ga.

CAROLINE SCOTT . . . Union Point, Ga.

MARJORIE I. SEARS Pearson, Ga.





CAROLYN SELMAN Decatur, Ga.

BONNIE SUE SEWELL Sparta, Ga.

EVELYN SHARPE Ogeechee, Ga.

ANNIE LEE SIMS Lincolnton, Ga.

FLORA SIMS West Point, Ga.

ANNIE PEARL SMITH . . . Milledgeville, Ga.

ELEANOR INEZ SMITH . . . Musella, Ga.

JENNIE LEE SMITH . . . Woodland, Ga.

MARY E. SMITH Warrenton, Ga.

MILDRED SMITH Jackson, Ga.

BETTY SNEAD Milledgeville, Ga.

MARTHA G. SPEAR Lakeland, Fla.

MYRA INEZ SPIVEY . . . Milledgeville, Ga.

CATHERINE STEED . . . Fort Valley, Ga.

MADelyn STEVENS Rome, Ga.

*Please insert
you always
remember
just*

MAUDE STEWART Milan, Ga.

WILMA STEWART Senoia, Ga.

HELEN SULLIVAN Savannah, Ga.



SOPHIE SWAIN Claxton, Ga.

ISABELLE TAPPAN White Plains, Ga.

FRANCES TARPLEY Leesburg, Ga.



JONNIE TARVER Wadley, Ga.

KATHRYN G. TAYLOR Greensboro, Ga.

WYNITTA TAYLOR Reynolds, Ga.



MILDRED TENNILLE Edison, Ga.

LEILA TERRY Albany, Ga.

NELL THOMAS Lavonia, Ga.



MARGARET A. THOMPSON . . . Vidette, Ga.

MARGARET B. THOMPSON, Swainsboro, Ga.

MARGARET C. THOMPSON, Shady Dale, Ga.



*Ex-hel's mail box
never know my
much love and
knapsack
with
pleat
get*



MARGIE THURMAN Edison, Ga.

CAROLYN TIGNER Washington, Ga.

HATTIE TODD Warrenton, Ga.

MARGARET D. TRAVIS . . . Jonesboro, Ga.

MARY EUGENIA TURNER . . . Royston, Ga.

BEULAH UNDERWOOD Sparta, Ga.

CORNELIA VEAL Oconee, Ga.

JENEVLYN WEST Columbus, Ga.

HELEN WALLING Collins, Ga.

JULIAN WALTON Washington, Ga.

RUBY WATKINS Milledgeville, Ga.

ANNIE SUE WELLS Woodbury, Ga.

LOUISE WHALEY Adel, Ga.

MARY E. WHITE Lithonia, Ga.

INA WILLIS Columbus, Ga.

MARION WHITE Comer, Ga.

MYRTICE WHITTLE Ocilla, Ga.

FRANCES WICKS Cummings, Ga.

EVELYN WILLIAMS . Stone Mountain, Ga.

ILA CADE WILLIAMS . . . Greenville, Ala.

JAMYE C. WILLIAMS . . . Richland, Ga.

SARA WOFFORD Social Circle, Ga.

MYRTICE WILLIAMS Cordele, Ga.

ETHEL WOOD Sandersville, Ga.

EVANGELINE WRIGHT . . Swainsboro, Ga.

MARY A. WOOD Williamson, Ga.

THELMA YOUNG Shady Dale, Ga.

EDITH ZEIGLER Zeigler, Ga.



Fancies

Golden, wavering shadows glisten on the wet walks
as lights on the college buildings are turned on.

The heavy rain has stopped

And a fine, misty drizzle permeates the air.

But the campus is a veritable fairyland of beauty,

For every path is a shining, gold stair

Leading to adventures and places unknown.

What joy untold to be free as the night,

To explore, to wander among the mysteries of gold
paths.

—IVERSON DEWS.

Dearest Ethel -

I'll never forget you cause
I've enjoyed being with you so
much. Try hard and don't forget
me -

Love
Squeat -
Columbus, Ga.

R
E
S
H
M
E
N

Freshman Class Officers



VERA HUNT Cedartown, Ga.
President



ELIZABETH GULLEY Decatur, Ga.
Vice-President



SALLYE GARRETT Quitman, Ga.
Secretary



CARROLL BUTTS Milledgeville, Ga.
Treasurer

EDNA B. ABBOTT

JULIA ADAMS

HELEN AGNEW

EDITH P. ALFRIEND

RUTH E. ALLEY

DOROTHY J. ANDERSON

MARY A. ANDERSON

MIRIAM ANDERSON

ANTOINETTE ARNOLD

MARGARET E. ARTHUR

GEORGIA ASHMORE

FALBA ATWATER

JESSIE AYCOCK

GRACE BANKS

MARGARET BANKS

DOROTHY BARR

JOSEPHINE H. BARRON

MARY F. BARTON

MILDRED BAUMGERTEL

SARA BECKHAM

CARLISLE BEGGS

FLOY BETTS

MARY B. BLACK

GWENDOLYN BLACKWELL



*Ethel, I've enjoyed knowing you
 a' much and also eating at
 the same table with you.
 Don't forget to remember me.*

Cecilia



MARY BLALOCK

CELIA BLASINGAME

Atlanta, Ga.

ZELDA BARNETT

GAY Z. BOWDEN

LOUISE BOYD

HELEN L. BRADY

MARGARET BRANNAN

RUTH BRANNAN

MABEL BRANTLEY

ROSALYN BRASSELTON

LOUISE BRASWELL

SARA G. BRAY

ALICE A. BRINSON

ALICE T. BRINSON

RUTH BROOKS

ALICE J. BRYANT

LORENE BULLARD

BOBBY BURNS

MARY BURSON

BEULAH BUSH

DORIS BUSH

LOUISE BUTLER

MARCELLE BUTLER

SARA BUTT

MARTHA CALLOWAY

ANNIE S. CAMP

CLAIRE CANADA

MARGARET CANADA

MARTHA CARMICHAEL

OSECELOTA CHAMPION

RUTH ~~CHAMPION~~

CHAPMAN Jonesboro, Pa.

EXA CHILDS

ALICE CLARKSON

MARY L. CLEGG

BLANCHE COLE

THELMA R. COLEMAN

VIVIAN COLEMAN

ALICE L. CONOLY

FRANCES COWAN

EDITH COX

CORINE DANIEL

JEWEL DANIEL

LOIS DARINGTON

LUCIE DAVIS

SELMA DEAN

ESSIE E. DEASON

EDNA R. DELAMAR

MARTHA DELOACH



*Ethel, I
sincerely
have enjoyed
knowing
you and
"eating
with you"
this year
at S.S.C.
I love you
hugs -
Ethel.*

Ethel dear
 I sure have
 enjoyed
 sitting at
 the table
 with you
 and I sure
 will miss
 you next
 year. I
 think you
 are a real
 sweet girl
 and I hope
 you will
 all my heart
 next year
 when you
 are far away
 from this
 Please drop
 me a few lines
 and I shall
 never forget
 you.
 Best wishes
 All Jack



MARY DICKS

DOROTHY DICKSON

MILDRED DILLARD

JACKIE DIXON

Lawrence, Ga.

HELEN DOMINGOES

DORA D. DOWNING

MARY DRISKELL

SARA DRISKELL

MARJORIE DUPREE

MARGARET DURDEN

HESSIE H. DURHAM

ETHEL EARL

MARY T. EBERHARDT

MARTHA E. EDWARDS

ALICE ELDER

EDITH ELDER

BERTIE B. ELEY

DOROTHY ELLIOTT

MARY FARR

ETHEL FAULKNER

KATHERINE FINN

MARTHA FERGUSON

CLAIRE FLANDERS

NEVA FLETCHER

MARIA FOREHAND

ELIZABETH FORT

JOSEPHINE FOUNTAIN

MARION FOX

EDITH FRYE

AGNES GAMMAGE

THAISA L. GARDNER

THERISA A. GARDNER

ANNIE W. GARNER

ELIZABETH GAY

RUTH GHEESLING

MARY B. GIBSON

VENICE R. GILBERT

MARGARET GRAHAM

MINNIE M. GRANT

LUCILE G. GRIFFIN

SARA GRIFFITH

FLORENCE GRIMES

MARY GROSS

SARA GUILLEBEAU

ELIZABETH HALL

SARA C. HARDEN

MILDA HARLAN

HELEN W. HARPER





*Other than I've
 enjoyed knowing
 you and eating
 at your table.
 Please remember
 one who loves
 you heaps.
 Love
 Helene*

GAY HARRIS
 JESSIE HARRISON
 MARION HARRISON

GRACE HART
 BERNA HARTLEY
 EVELYN HARFIELD

ALICE HAYDEN
 MARY HAYGOOD
 MARDELLE HEATH

DOROTHY E. HEYHOE
 CATHERINE HICKS
 KATHRYN HIGHTOWER
Jonesboro, Ga.

MATTIE L. HINSON
 JOSEPHINE HOGAN
 WORTLEY HOLLAND

SARA HOLLE
 ANESE HOLLIMAN
 ELLA M. HOLLIS

MILDRED HOWELL
 ELIZABETH ISOM
 AILEEN JOHNSON

MARY JOHNSON
 ULLAINEE JOHNSON
 SARA E. JOHNSTON

CAROLINE JOINER

ELSIE JONES

HELEN JONES

MARGARET A. JONES

MAYDELL KENDALL

LOUISE KENT

EUNICE E. KING

MINNIE KING

LAURA LANE

CATHERINE LANGFORD

JEWEL LASSITER

DOROTHY LAWSON

SUSIE L. LAWSON

MILDRED LEMASTER

LOLA V. LEWIS

DORIS LINDSEY

DOROTHY LIPHAM

MARTHA L. LYNCH

JANIE MADDOX

LORAIN MALLONE

FLORIEDE MANREY

HENRIETTA MATTHEWS

WALTER B. MATTHEWS

ELLA MAXWELL





JOYCE MAXWELL

ANNIE MAYNARD

SYBIL E. MCARTHUR

MYRTICE MCCOMMONS

EDNA MCELHENY

MARY MCINTYRE

CORA E. MCEVER

SARA J. MCGAHEE

ANNIE L. MCGINNIS

LEILA M. MCKINLEY

ANNIE M. McMULLEN

ELIZABETH MERRITT

BLANCHE MIDDLETON

MARY K. MIDDLETON

HELEN MILLER

MARY R. MILLS

LENA MINTON

FRANCES MITCHELL

MARGARET MITCHELL

VIVIAN MITCHELL

REAux MITCHUM

GUSSIE MIXON

MAXIE MIXON

ELIZABETH MOORE

*Ethel, it has
certainly been
a pleasure
to know you
and eat at
table with
you.
Remember me
cause I love
you lots
Anne Mae*

Janesboro, Ga.

JEWEL MOORE

MARGARET MORGAN

VERA MORRIS

LILLIAN MUNDY

BESSIE MURRAY

LENORA MURRAY

JESSIE MUSSELWHITE

SUSIE NELSON

EUDA L. NEWTON

SUSIE E. NORRIS

MAMIE NORWOOD

RUBY O'DELL

ELIZABETH OLIVER

WILLIE M. OLIVER

VANDIVERE OSMENT

ELIZABETH OVERSTREET

MABEL PARKER

LAURA L. PARRAMORE

ELIZABETH PASCHAL

FRANCES PERRY

MARY D. PERRY

ANNIE PHIEFER

DOROTHY PIPER

LUCILLE PITTS





SOPHIA PORTER

JOSEPHINE PRITCHETT

ANGIE PUCKETT

PINKIE RACHELS

MARIE RALEY

JANE RAMBO

MARY J. RATCHFORD

RUTH RADCLIFF

VIRGINIA RAUCH

LORENE E. RILES

SARA V. RILEY

VIVIAN ROBERTS

MARY ROGERS

MARY N. ROOP

MARGARET L. RUCKER

GEORGIA B. RUSSELL

ELIZABETH SAMMONS

MAURINE SAMMONS

AUSTELLE M. SANDERS

BERT SAUNDERS

JANIE SCARBROUGH

EVALYNE J. SEAWRIGHT

ANNE SEGALL

RUTH SENN

MOZELL SHAMBLIN

CAROLINE M. SHEAROUSE

MARY O. SHEAROUSE

LUCILE SHEFFIELD

CARRIE M. SHIVERS

SYLVIA SILVER

MILDRED L. SIMMONTON

LUCILLE SIMPSON

LILLIAN E. SIMS

FRANCES SMITH

KATHRYNE SMITH

LILA SMITH

MADGE SMITH

MARTEAL SMITH

MARY F. SMITH

MATTIE E. SMITH

VELMA SMITH

SUSAN H. SMITH

VIRGINIA SMITH

EDITH SNYDER

MARJORIE SOLOMAN

HELEN SOUTHWELL

GWENDOLYN SPEIR

MARY H. SPRINGER





BESSIE STANCIL

LOUISE STANSEL

MAY E. STEPHENS

EVELYN STEPHENS

SARA STOKES

CAROLYN STRAIN

MARTHA STRANGE

EDITH D. STROUD

MYRTLE SUMMEROUR

MARY SUMMER

NELL SWINT

KATHERINE TAFF

MARGERETTE TEASLEY

MARY V. TENNILLE

SARA THAXTON

CAROLYN E. THOMAS

CHRISTIE THOMPSON

LA VERNE THOMPSON

MARTHA THOMPSON

SARA THOMPSON

EDNA TIGNER

ELIZABETH TIPPINS

MARGARET TRAPNELL

ELIZABETH L. TUCKER



IDA N. TURNER

JULIA TURNER

LORETTA TURNER



MARY F. TYE

FRANCES M. VANCE

MILDRED VEATCH



KATHRYN VINSON

IRWINE WALDEN

NELLIE K. WALLACE



GLADYS P. WALLER

MYRTLE WALLER

VIRGINIA WATSON



SARA WEAVER

IVA P. WEBB

PEARL WHELCHER





FLORRIE WHITE

FRANCES WHITWORTH

MARY L. WHITWORTH

ANNA WILLIAMS

AQUILLA WILLIAMS

CLARA WILLIAMS

FRANCES WILLIAMS

GRACE WILLIAMS

MILDRED WILLIAMS

REGINA WILSON

ELIZABETH WOOD

JESSIE WOOD

NELL WOOD

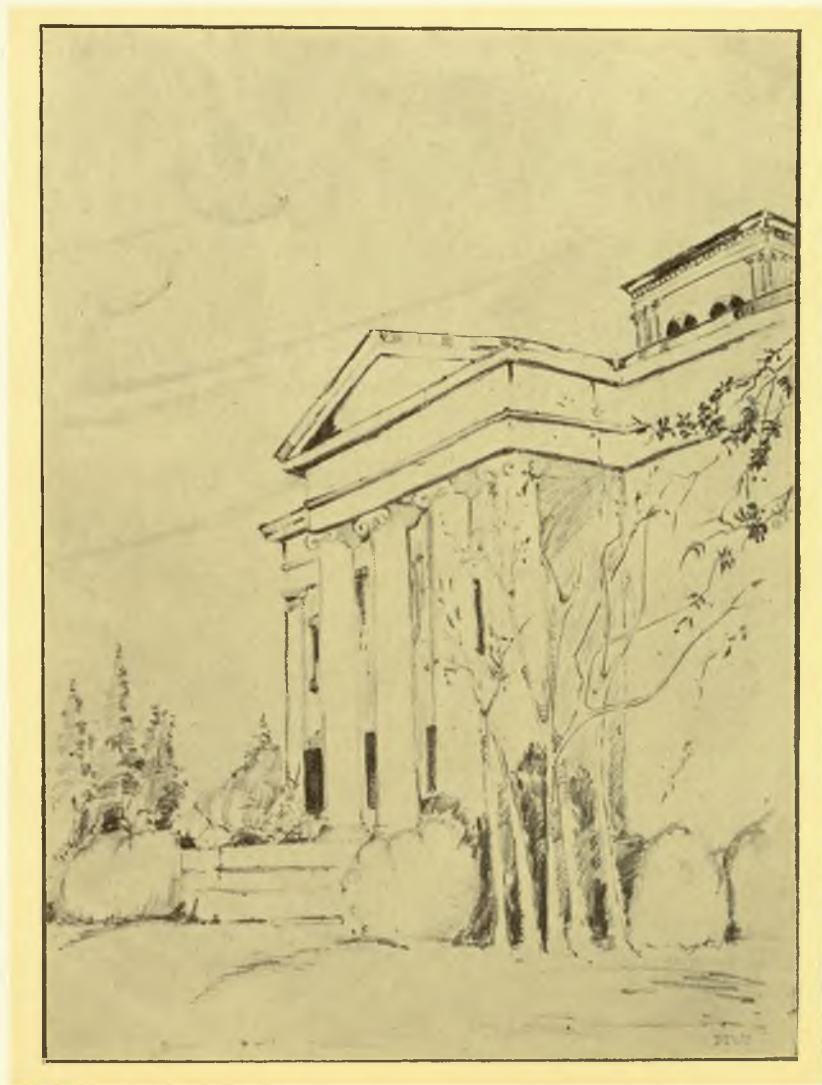
FRANCES O. WOOTEN

PAULINE WRIGHT

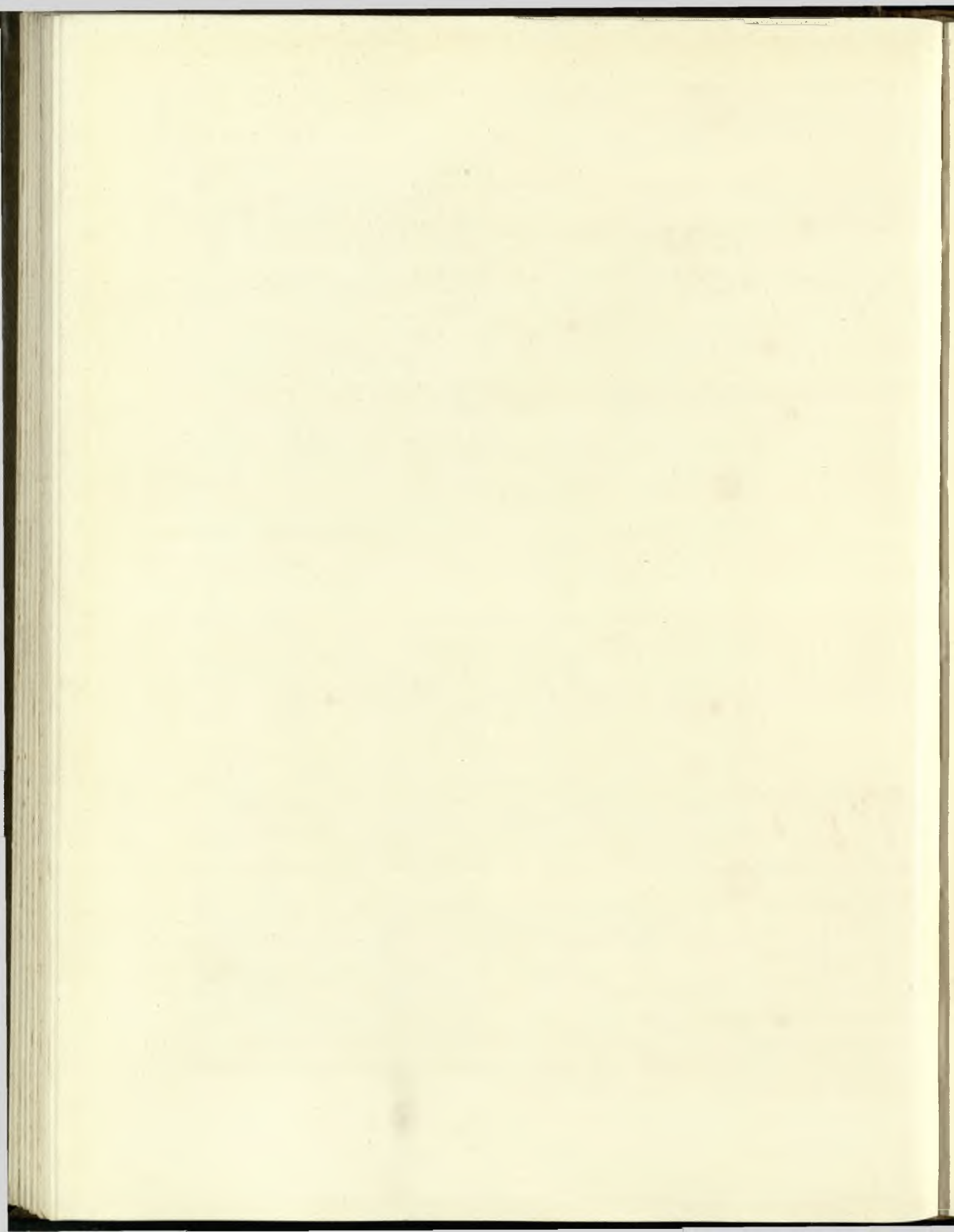
SARA WEAVER

ZELMA WRIGHT

WILLIE ZUKER



FEATURE/





Miss Caroline Cheney
Miss G. S. C. W. Best All Round



Miss Frances Christie
Most Capable



Miss Dorothy Thaxton
Most Intellectual



Miss Nell Combs
Most Stylish



Miss Kathryn Harris
Wittiest



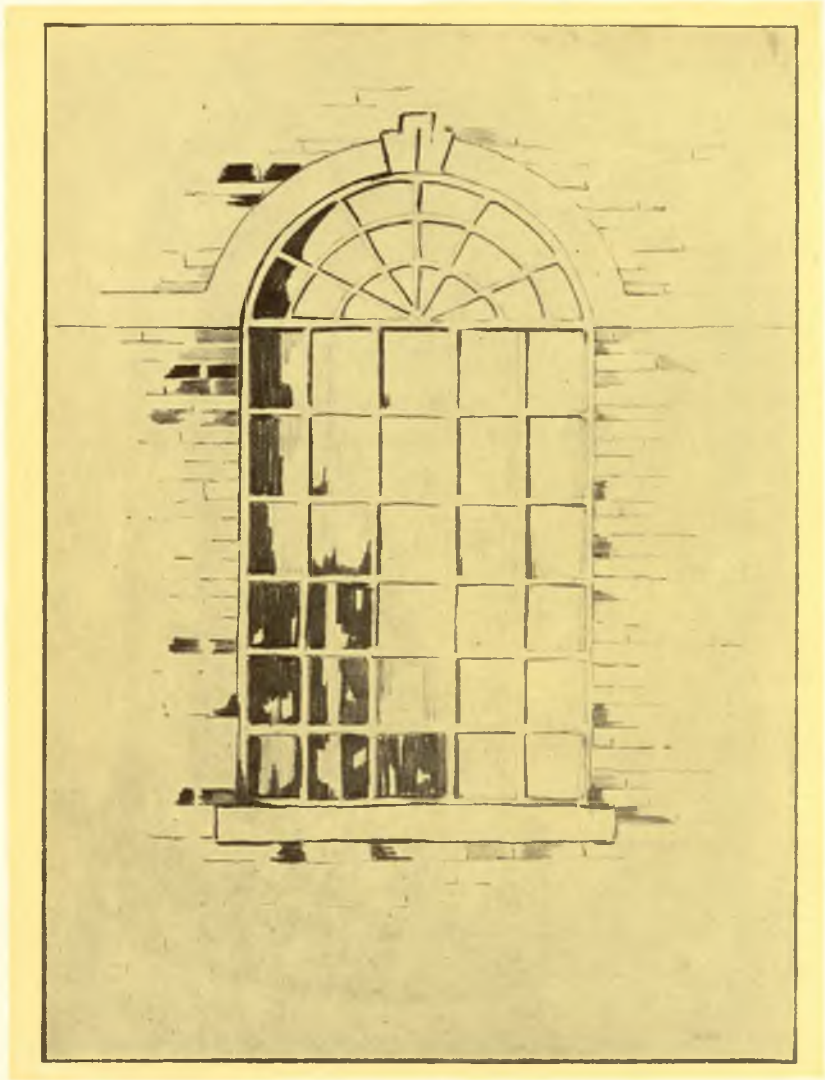
Miss Dorothy Little
Most Athletic



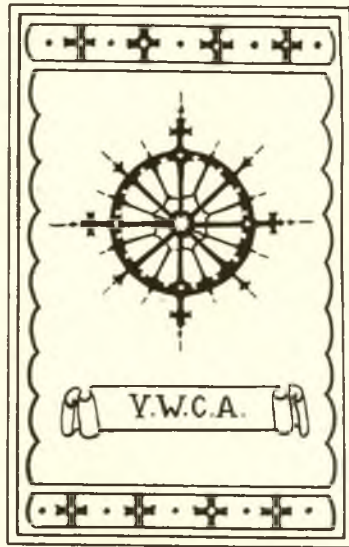
Miss Elise McCrary
Prettiest



Miss Florence Rogers
Happiest



ACTIVITIES





Purpose

We, the members of the Young Women's Christian Association of the Georgia State College for Women, unite in the desire to realize rich and creative life through a growing knowledge of God. We determine to have a part in making this life possible for all people.

In this task, we seek to understand Jesus and follow him.

Motto

"I am come that they might have life, and that they might have it more abundantly."



"Many years ago when the 'Kingdom of Friendly Hearts' was but a name written upon the sands of Galilee, a little group of friends, leaving their fishing boats and little shops, met to talk and laugh and worship. They were all busy men and often could find no time, save the end of the day, for meeting their Master Friend. The stories that He told were all of growing things, lilies, and vineyards, and little children. Along country lanes, up steep mountain paths, beside still waters He led them, telling them of the dream of His life. For the Master dreamed of a new social order where all men were equal, regardless of class, of color, or of the type of work they did. They would share together in a friendly citizenship. That was Christ's way of life."

In the year 1895, when our College was in its infancy, thirty-three charter members (Miss Alice Napier was one of them) met after a busy day's lessons to attempt to realize this same dream through the organization of a Young Women's Christian Association.

This dream of theirs, through the guidance of the Master Friend, has been cherished until today there are over a thousand busy students on our campus who strive to keep undimmed the radiance of the light which has been handed down to them through the years.

In the freshness of early morning and in the twilight hour, after the rush and turmoil of the busy day, students meet for morning watch, vesper services, and Bible study—their way of sharing dreams and ideals and freshly discovered truths about life. Parties, teas, hikes, receptions, and other recreational features add to the life of the Y. W. C. A. members the note of joy which was a part of the Master's dream.

Through work and play and fellowship and worship, the Young Women's Christian Association strives to help students to realize more fully the significance of "life in abundance."

To the Knights in the days of old,
Keeping watch on the mountain high;
Came a vision of Holy Grail,
And a voice through the waking night.

REFRAIN

Follow, follow, follow the gleam,
Banners unfurl o'er all the world,
Follow, follow, follow the gleam
Of the light that shall bring the dawn.

And you who would serve the King,
And loyally him obey
With the consecrate silence know
That the challenge still holds today.

Y. W. C. A. Cabinet



FAYE SESSIONS
President

OFFICERS

FAYE SESSIONS *President*
 CAROLINE CHANEY . . . *Vice-President*
 ALVARETTA KENAN *Secretary*
 DOROTHY THAXTON *Treasurer*

FRANCES CHRISTIE
Undergraduate Representative

ROLL

CAROLINE CHANEY
 FRANCES CHRISTIE
 MARY FRANCES COWAN
 REBECCA FOWLER
 LAURA LEE GIBSON
 ALVARETTA KENAN
 KATHERINE HEMPHILL
 DOROTHY JAY
 CLEO JENKINS
 LEO JORDAN
 CATHERINE JONES

Y. W. C. A. Cabinet



ANNIE MOORE DAUGHTRY
General Secretary

ROLL

VERA HUNT
LOUISE LOWE
ROBERTINE McCLENDON
FANNIE McLELLAND
ANNIE KATE MELTON
ANNIE JO MOYE
DOROTHY PARK
MARY RABY
DORCAS ROOKER
PAULINE SIGMAN
LOUISE STANFORD
DOROTHY THAXTON
MARIE TUCKER
DORIS WATKINS



Y. W. C. A. Sophomore Commission



ANNIE KATE MELTON

OFFICERS

ANNIE KATE MELTON . . . *President*
 CAROLINE SELMAN . . . *Vice-President*
 NORA ETHEL ENGLISH . *Secretary-Treasurer*

ROLL

ETHLYN ARNOLD
 NELL BROWN
 MARGARET CUNNINGHAM
 NORA ETHEL ENGLISH
 GERTRUDE GILMORE
 GRACE GREGG
 SALLIE HALL
 NAN HAMBY
 PEARL HACKETT
 ANN HICKS
 REBECCA HOLBROOK
 LORA LAINE
 FLORENCE MORGAN
 JOSEPHINE PROCTOR
 CAROLINE RUSSELL
 CAROLINE SELMAN
 ELIZABETH STEWART

Y. W. C. A. Freshman Council



ELIZABETH GULLEY

OFFICERS

- ELIZABETH GULLEY *President*
 SALLYE GARRETT *Vice-President*
 BEVERLY BRANTLEY *Secretary-Treasurer*

ROLL

- DOROTHY ANDERSON
 MARGARET ARTHUR
 HELEN BARRON
 ALICE BRYANT
 CATHERINE BAUGH
 BEVERLY BRANTLEY
 NELL COLEMAN
 MARY DRISKELL
 LILLIAN EBERHART
 FRANCES WILLIAMS
 MARY BELLE GIBSON
 ROBERTA GILBERT
 VERA HUNT
 LILLIAN MUNDY
 VENDIVERE OSMENT
 MARY SCOTT PHIPPS
 DOROTHY PIPER
 ELIZABETH SAMMONS
 ELIZABETH TUCKER
 FRANCES WILLIAMS

*New Hope Rd.
 Gastonia, N.C.*



*... of 2
 ...
 all night
 and filled
 the whole
 boat 2
 Couldn't
 begin to tell
 you how
 much I
 love you
 and how
 glad I am
 to
 meet you.
 Love
 always
 Cat Baugh
 (This was
 mistaken
 for Eugenia
 Serisgin's
 Bobbie)*

Blue—Illusive and Expressive

There is the green of grass and leaves,
The gold of buttercups and sun,
But blue has meanings to unfold.
Within its kingdom power lies.
There's the blue of skies far reaching,
A canopy that covers all.
There's the blue of lakes—reflecting
The color of God's own heavens,
There's the blue of forget-me-nots,
Baby's softly appealing eyes,
And moods for rainy, dreary days.
Blue—illusive and expressive.

—DOROTHY PARK



A Synopsis of an Olympic Day at G. S. C. W.

Field Day

A ONE-ACT ACTION PLAY

Time: Dawn 'til Dark.

Season: A May Day.

Place: G. S. C. W. Campus.

Setting: An incongruous, glorious, mad medley of green grass, blue skies, joyous girls, flying colors, peppy sounds, and quick action.

THE STORY

That majestic herald, the Sun, silently draws back the black curtains of night, and discloses the bright, early hours of a sportive May morn, on the Campus of the Georgia State College for Women. The usual quietness of early morning on the Campus is greatly disturbed by a large group of hurrying, scampering, excited girls. First they are here yelling for all they are worth, then yonder displaying all the artistic ability they can possibly get together, to create a Campus fairy-land of colored crepe paper, and finally end up by making a grand display on the athletic field of *all* the colors. What does it all mean? Why are the girls up so early? Why the enthusiasm? If you have ever been to G. S. C. you recognize this as the joyful spirit of Field Day.

Another field day is here! Every class is working for the victory, and the privilege of planting her umbrella on the front campus—with the thrill of knowing that unless it is carefully guarded, some brave "Jimmies" will, in the wee hours of the night, claim it for their own!

The field is ready, the time is near at hand, everybody is excited, wondering who will win! The huge umbrellas decorated in the colors of the respective classes are attached to high pinnacles and majestically placed on the four divisions of the field.

Now the fun has begun! The classes make their appearances, one at a time, each dressed in class colors and costume, some running, some dancing, some sliding down the fire escape, some seemingly out of a clear sky, and take their places. Now the cheer leaders are running frantically up and down, leading yells and songs that express class spirit, good sportsmanship, and confidence in their teams to win fairly and squarely. Things are now happening so fast we can hardly keep up with them.

There are inter-class songs, pantomimes of fairy tales, old English plays and games, and American Indian plays and games. Now our attention is called to a spot where the contests in running, jumping, throwing, and skating are so exciting that we can hardly keep from losing our hats! Then there are various stunts, clogs, and character dancing to add to the fun.

A hushed silence suddenly falls over the group, often broken by outbursts of joy, for the judges are announcing their decision.

CONCLUSION

The decisions are rendered, shouts of victory pierce the sky, the victorious class plants the umbrella. Once more that majestic herald draws the curtains of night! Thus ends another field day!



Romance spring,
Love a dance,
The loveliest thing



Senior Teams



Junior Teams



Sophomore Teams



Freshman Teams











WILL COTTON GO UP?



OH HENRY!



WHAT CAUSES THIS?



ROOMIES
WHAT'S WRONG IN THIS PICTURE?



IN THE OLD WOODPILE



THE MORNING AFTER



THE FELIXES



OVER AND UNDER



**THE PRESIDENTS
VETO**



A FRESHMAN'S DREAM



**REDUCE THIS
EASY WAY**



G.S.C.W. DID IT!



DRINK AND BE MERRY



DOWN BUT NOT OUT



POCKET SIZE



THE DOLLY SISTERS



COOPERATION COUNTS



'TIS SUNDAY



LETS PLAY CHECKERS



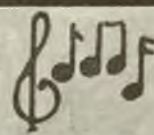
SERVE YOURSELF



HOMeward BOUND

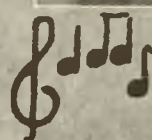


FAIR DAYS ARE HAPPY DAYS



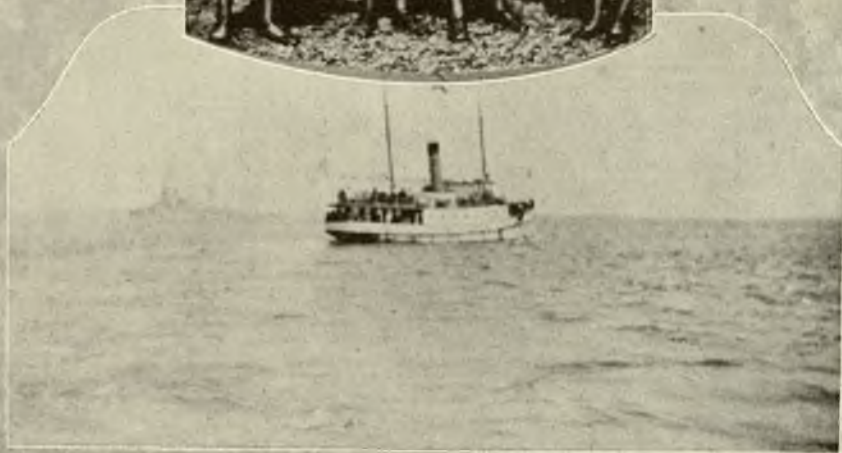
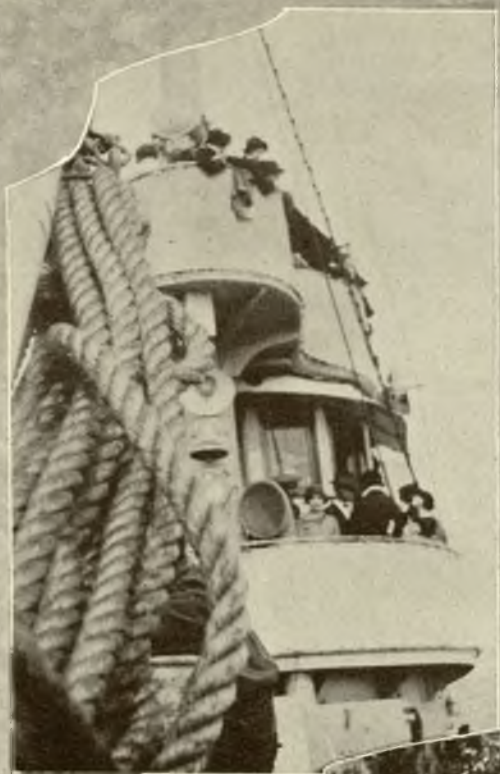
MERRILY WE STROLL ALONG
STROLL ALONG
STROLL ALONG



 MERRILY WE STROLL ALONG
ON THE ANNUAL HIKE



INNOCENTS ABROAD
SENIOR TRIP TO CHARLESTON



I Wonder Why

I wonder why it is I plunge
My awkward finger through
The gauze of every single dream
I want to have come true.

I've tried to mend the fabric
With a fairy needle fine,
But I could not restore the hues
Of those lost dreams of mine.

—MARGUERITE ARTHUR





Colonnade



EDITH IVEY
Editor-in-Chief

DR. W. T. WYNN
Faculty Advisor

STAFF

- AUSTELLE ADAMS . . . *Assistant Circulation Manager*
 SPENCER DARDEN *Associate Editor*
 MARY ELLIOT *Managing Editor*
 SALLY HALL *Business Manager*
 KATHRYN HARRIS *Feature Editor*
 CAMILLA HUTCHINSON *Reporter*
 MARIE LONG . . . *Assistant Circulation Manager*
 MARY WARE MARTIN . . . *Circulation Manager*
 MILDRED O'NEAL . *Assistant Circulation Manager*
 DOROTHY PARKS *Business Manager*
 JOSEPHINE PROCTOR *Exchange Editor*
 CAROLINE SELMAN *Business Manager*
 PAULINE SIGMAN . *Assistant Circulation Manager*
 MARION SPARROW *Associate Editor*
 CAROLINE TIGNER . *Assistant Circulation Manager*
 DORIS WATKINS *Reporter*
 MAY KITTLES *Reporter*
 NELL BROWN . . . *Assistant Circulation Manager*
 ELIZABETH STEWART . *Assistant Circulation Manager*
 REBECCA HOLBROOK *Reporter*

Corinthian



GLADYS McMICHAEL
Editor-in-Chief

STAFF

WILLIE BAKER
Exchange Editor
SPENCER DARDEN
Associate Editor
IVERSON DEWS
Assistant Business Manager
FLORINE HATCHER
Alumnae Editor
ROBERTINE MCCLENDON
Literary Editor
BERNICE BROWN MCCULLAR
Literary Editor
FANNIE McLELLAN
Exchange Editor
MILDRED MERRELL
Business Manager
DORCAS RUCKER
Associate Editor
ESSIE BELLE RUSSELL
Alumnae Editor
MARY ROBINSON
Associate Editor
MARION SPARROW
Feature Editor
LOUISE STANFORD
Feature Editor
MISS WINIFRED CROWELL
Faculty Advisor



Spectrum Staff



ROBERTINE MCCLENDON
Editor-in-Chief

STAFF

MARY BOHANNON

CAROLL BUTTS

CAROLINE CHENEY

SPENCER DARDEN

IVERSON DEWS

MARY ELLIOTT

KATHRYN HARRIS

ANN HICKS

REBECCA HOLBROOK

DOROTHY JAY

THELMA JOHNSON

Spectrum Staff



FRANCES CHRISTIE
Business Manager

STAFF

DOROTHY LITTLE

MARGARET LUMPKIN

ANNIE KATE MELTON

AUGHTRY OLIVER

JOSEPHINE PROCTOR

FLORENCE ROGERS

CAROLINE SELMAN

PAULINE SIGMAN

MARION SPARROW

ELIZABETH STEWERT

• DORIS WATKINS



The Elements

The Wind came—

And the beautiful cornfield nodded its
Head and courtesied its welcome while the
Lake frowned darkly and flew into a
Rage and lashed itself into a fury
Until it became white with an angry foam.

The Rain came—

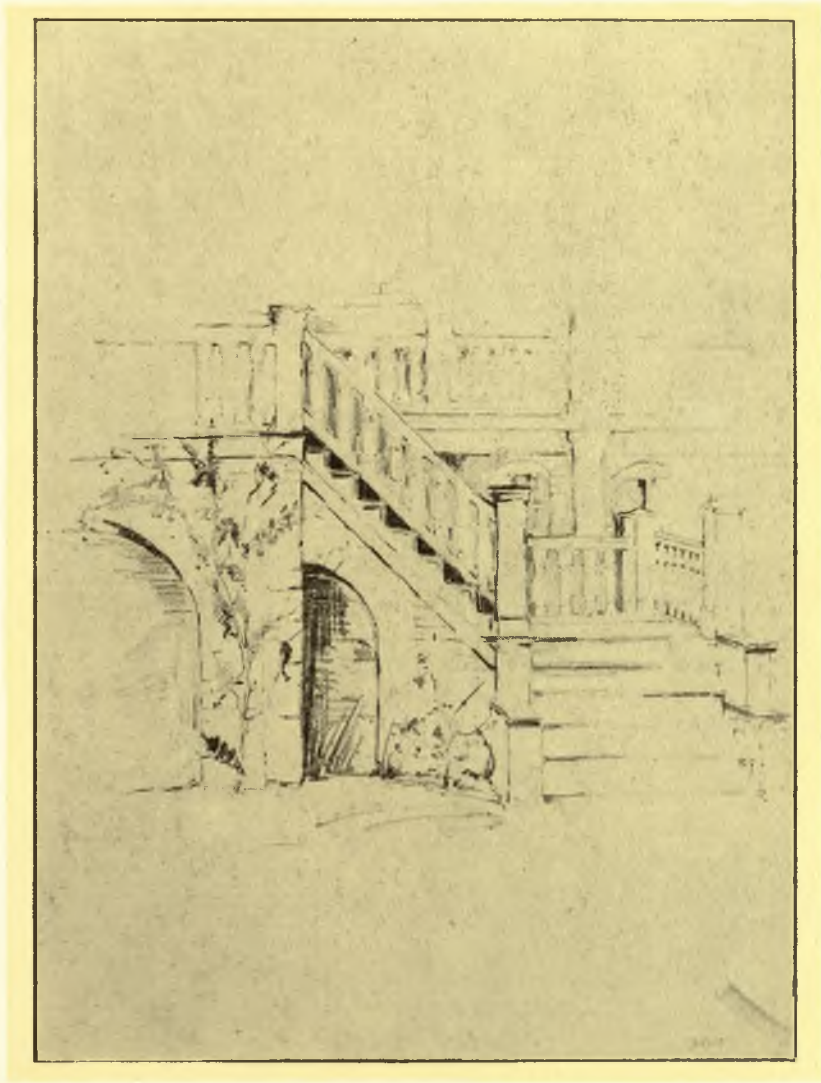
And beat upon the cornfield until it
Bowed its head and its limbs
Drooped while great tears dropped to
The ground from each quivering leaf
And the lake laughed and danced at the suffering corn.

The Sun came—

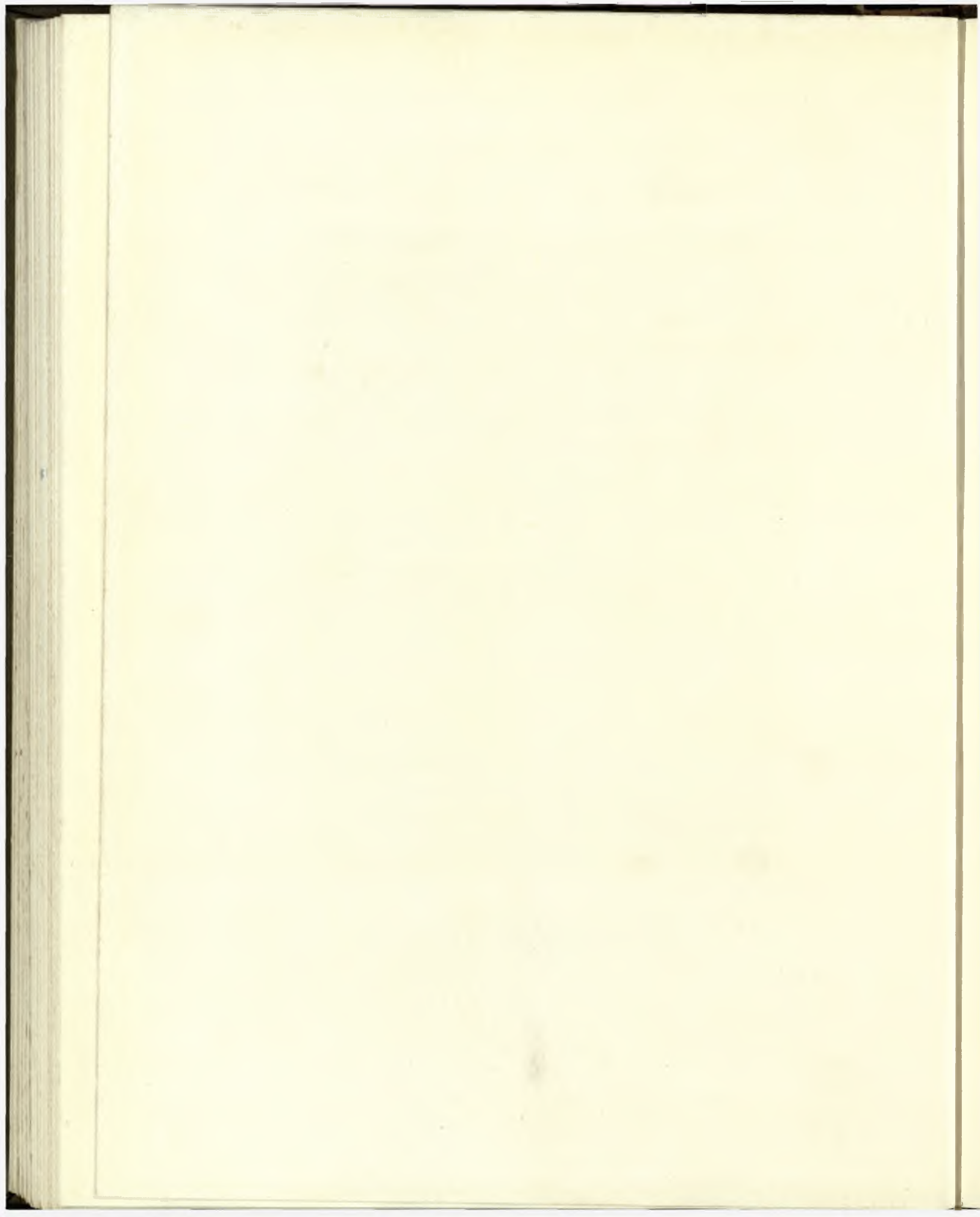
And the cornfield smiled and again
Lifted its head, and stretched its limbs
With joy and life; while the lake
Unable to withstand such a rebuke
Withered and died in shame and left the earth.

To my dear Wife.

J. R. MACEACHRON,
G. S. C. W. Architect.



ORGANIZATIONS



English Sophomore Club

OFFICERS

CAROLINE SELMAN
President

KATHLEEN HATCHER
Vice-President

ETIENNE MCCRANIE
Secretary-Treasurer

ROLL

LOUISE BARROW
LOUISE CHAMBLISS
FRANCES DUNN
RUTH E. HAMMOND
EVELYN JONES
MARY LOU McDONALD
SARA MILLER
REBECCA MORTON
CAROLINE SELMAN
THELMA YOUNG
GRACE MCGILL
LUCILE BROWN
ISOBEL CLIATT
MINNIE FOKES
LUCILE HAYES
ALVARETTA KENAN
EDITH MACKEN
MARY MOORE
LENORA MORRIS
KATHRYN TAYLOR
HELEN JOHNSON
LOUISE WHALEY
SARAH ELIZABETH CARR
LOU ELLA COFFEE
MARY EVELYN HAMMET
CAMILLA HUTCHINSON
MAY KITTLES
GEORGIA MILLER
FLORINE MORGAN
ADDIE PARKER
SARA WOFFORD
LORA LAINE



Clara Whorley Hasslock Club

Home Economics

OFFICERS

VIVIAN MCLENDON
President

MARTHA HARRIS
Vice-President

RUTH MEADOWS
JEWELL RUSSELL
Secretaries

WILLENE JOLLEY
Treasurer

MISS GUSSIE TABB
MISS BLANCHE HAMBY
Faculty Advisors

ROLL

ERA ALDERMAN
SARAH ALLEY
MARY BETH BARNETT
NELLE BROWN
MARY BURSON
JEWEL BURTON
MARY CARSON
MARIE CHASTAIN
IDELLE COLLINS
DOROTHY DOWLING
ETHEL JOE FAULKNER
EDITH FRYE
LOUISE GREENE
MARY LYNN HULL
MARY HURDLE
JUANITA JOHNSON
PATRICIA JONES
LOIS LOUISE BRIGGS
KATHERINE BURNLEY
MARTHA HARRIS
HELEN HOLSENBECK
MISS BLANCHE HAMBY



Clara Whorley Hasslock Club

Home Economics

ROLL

LOUISE LOWE
INEZ McARTHUR
ELISE McCRARY
VIVIAN McLENDON
SALLYE RUTH MEADOWS
JUANITA MOORE
MYRTLE MORRIS
LAURA NEELY
MARY SCOTT PHIPPS
EVELYN PITCHER
JEWELL RUSSELL
SYLVIA SATTERFIELD
PAULINE SIGMAN
VESTA SMITH
MARY VINSON
IDA PEARL WEBB
MARY WOOD
RUTH McMICHAEL
LOIS McWILLIAMS
ISABEL TAPPAN
JULIAN WALTON
ELIZABETH STEWART





French Club

OFFICERS

ROBERTA PARRIS

President

CLARA GREGG

Vice-President

DOROTHY LITTLE

Secretary-Treasurer

DR. ERWIN BOHM

Faculty Advisor

ROLL

AUSTELLE ADAMS

ADDIE ATWOOD

WILLIE BAKER

DOROTHY BANKS

EDITH BOWDEN

LOUISE CHAMBLIN

MARY CAMPBELL CHAMBLISS

GERTRUDE COOPER

IDOLENE COSBY

MILDRED DIAL

MARY DEMON

ROSSIE MAE EATON

FRANCES FORDHAM

LAURA LEE GIBSON

DELTA GRANT

CLARA GREGG

LILL HALEY

GENEVIEVE HARGROVE

ELISABETH HEARN

LEILA HERMANN

MAZIE HODGES

FRANCES JACKSON

VIOLA JAMES

KATHERINE JONES

ELIZABETH JONES

VELMA KEMP

HARRIET KIDD

DOROTHY LITTLE

MARGARET LUMPKIN

LILLIAN BROWN

FANNIE GOODRICH

EVELYN HAMMETT

NAN HAMBY

LOUISE MAYFIELD

French Club

ROLL

RUTH MALLARD
ELISE MCCRARY
EDITH MONTGOMERY
FRANCES MORGAN
ROBERTA PARRIS
RUTH ROARK
MARY ROBINSON
FLORENCE ROGERS
VIRGINIA ROOKS
MAE ROSS
ANNIE LAURIE RUSH
MARY JULIA SASNETT
MARY ANN SAVAGE
EUGENIA SCROGGIN
MYRTLE LOU SEARS
EMILY SHEPHERD
KATHERINE SHIVERS
ROSA LEE SHANNON
ZERA STEPHENS
ELSIE SPIERS
MARIE TUCKER
CATHERINE VINSON
ANNIE MAE WALKER
MYRTICE WILLIAMS
ETHEL WOOD
LILLA WOOD
RUTH WRIGHT
CHRISTINE WYNN
SARA HARVEY
FORD STAPLES
LOUISE MCCARTHY
MARY LOU McDONALD
ANNIE LEE SIMS
INA WILLIS
GERTRUDE GILMORE



Senior Glee Club

OFFICERS

FLORENCE ROGERS
President

DOROTHY PARK
Vice-President

HELEN COCHRAN
Secretary-Treasurer

MRS. HELEN G. LONG
Faculty Advisor

ROLL

MARY CASTAGNINO

DOROTHY COLQUITT

LUCY HARDING

NANCY HEARD

GLADYS MCMICHAEL

JUANITA MOORE

MARY RABY

ELIZABETH REESE

FLORENCE ROGERS

PAULINE SIGMAN

MARIE TUCKER

DOROTHY PARK



Junior Glee Club

OFFICERS

BEATRICE HOWARD
President

IRMA VAUGHAN
Vice-President

MILDRED O'NEAL
Secretary-Treasurer

MRS. HELEN M. LONG
Faculty Advisor

ROLL

EDITH BOWDEN

LOUISE COBB

MARGARET COYNE

MARY ELLIOT

LIZZIE MAE GAMMAGE

FLORINE HATCHER

DOROTHY JAY

MILDRED O'NEAL

MARY JULIA SASNETT



Sophomore Glee Club



OFFICERS

VIRGINIA McALLISTER
President

MARGARET CUNNINGHAM
Vice-President

MARJORIE NEAL
Secretary-Treasurer

MISS TUCKER
Faculty Advisor

ROLL

GERTRUDE COOPER

MARGARET CUNNINGHAM

MARY HURDLE

FRANCES JACKSON

CATHERINE JONES

EDITH MACKEN

MADelyn STEVENS

MARY TURNER

CAROLYN BRUNSON

ELIZABETH WHITE

Freshman Glee Club

OFFICERS

ELIZABETH TUCKER
President

CLAIRE FLANDERS
Vice-President

LUELLA CAPEL
Secretary

MISS ALICE L. TUCKER
Faculty Advisor

ROLL

MILDRED BAUMGARTEL

ZORATA BOWDEN

VIVIAN COLEMAN

LUCY DAVIS

LORRAINE MALONE

MAY BLANCHE MIDDLETON

JESSIE WOOD



Health Club



OFFICERS

CAROLINE CHENEY
President

IRMA VAUGHAN
Vice-President

MARION SPARROW
Treasurer

MRS. K. W. WOOTTEN
Faculty Advisor

ROLL

MRS. K. W. WOOTTEN

SARA BLOUNT

LORICE CANNAFAX

MARY CASTAGNINO

CAROLINE CHENEY

MARGARET COYNE

MARY ELLIOTT

NELLIE FISHER

ALMA GLADDIN

NANADELYN HALL

KATHERINE HEMPHILL

ETHEL HERRING

ANN HICKS

FRANCES HOLMES

LEO JORDAN

MARIE LONG

RUTH LOWE

SARA CALLAGHAN

Health Club

ROLL

ROBERTINE McCLENDON

BLANCHE McCLESKY

MARY MITCHAM

ANNIE JO MOYE

KATHLEEN SHEDD

CHARLOTTE SHELNUTT

HAZEL SLOAN

ORION SMITH

MARION SPARROW

ELISE STONE

VIVIAN OUTLER

CHARLOTTE WALLACE

MATTIE BELL WEST

EVELYN WILLIAMS

MARY WILLIAMS

FRANCES WILLIAMS

FLORINE WILLIAMS

EVELYN WILSON





History Club

OFFICERS

KATHRYN HARRIS
President

RACHEL CREECH
Vice-President

VIOLA JAMES
Secretary

LOUISE STANFORD
Treasurer

DR. AMANDA JOHNSON
Faculty Advisor

MISS POLLY MOSS
MR. H. F. WHITE
Honorary Members

ROLL

DR. AMANDA JOHNSON
 PROF. HENRY F. WHITE
 ERA ALDERMAN
 LOUISE ANDERSON
 ADDIE ATWOOD
 WILLIE BAKER
 ELEANOR BRANNEN
 CLARA CARSWELL
 GERTRUDE COOPER
 IDOLENE COSBY
 RACHEL CREECH
 FLORENCE COBB
 MILDRED DIAL
 KATHERINE DUGGAN
 LIZZIE MAE GAMMAGE
 NORA GASTON
 LAURA LEE GIBSON
 THELMA GOODING
 GENEVIEVE HARGROVE
 KATHRYN HARRIS
 NANCY HEARD
 HELEN HAGAN
 BEATRICE HOWARD
 FRANCES JACKSON
 VIOLA JAMES
 CLEO JENKINS
 LILLIAN JENKINS
 NELL DAY
 FANNY GOODRICH

History Club

ROLL

ELIZABETH JENNINGS
THELMA JOHNSON
MARION LANE
ROBERTINE MCCLENDON
ELISE MCCRARY
FANNIE MCLELLAN
MILDRED MCWHORTER
EDITH MONTGOMERY
ANNIE JO MOYE
JULIA MUSE
MILDRED O'NEAL
JOSEPHINE PROCTOR
MARY RABY
ELIZABETH REESE
JULIA REESE
LOUISE REEVES
VIRGINIA ROOKS
RUTH ROARK
MAY ROSS
DORCAS RUCKER
FAYE SESSIONS
LOUISE STANFORD
ORION SMITH
ZERA STEPHENS
CAROLINE TIGNER
DORIS WATKINS
FLORINE WILLIAMS
NAN HAMBY
ANTOINETTE LAWRENCE
REBECCA MORTON





Literary Guild

OFFICERS

MARGARET LUMPKIN
President

DORIS WATKINS
Secretary-Treasurer

MISS WINIFRED CROWELL
Faculty Advisor

ROLL

AUSTELLE ADAMS
ADDIE ATWOOD
WILLIE BAKER
THELMA BEALL
FLORENCE COBB
LOUISE COBB
DOROTHY COLQUITT
RACHEL CREECH
CARRIE FRANK CRUTE
IVERSON DEWS
ROSSIE MAY EATON
MARY ELLIOT
IRENE FENN
NELLIE FESHER
FRANCES FORDHAM
REBECCA FOWLER
DELTA GRANT
LOUISE HAM
GENEVIEVE HARGROVE
KATHERINE HARRIS
ETHEL HARTLEY
FLORINE HATCHER
LUCY HEMPHILL
HELEN HAGAN
MARY HOUSER
BEATRICE HOWARD
EDITH IVEY
DOROTHY JAY
CLEO JENKINS
ELIZABETH JENKINS
THELMA JOHNSON
HARRIETT KIDD
MARION LANE
DOROTHY LITTLE
MARIE LONG

Literary Guild

ROLL

MARGARET LUMPKIN
ROBERTINE McCLENDON
KATHERINE McCRACKEN
FANNIE McLELLAN
GLADYS McMICHAEL
MILDRED McWHORTER
MILDRED MERRILL
EDITH MONTGOMERY
FRANCES MORGAN
JULIA MUSE
DOROTHY PARK
DOROTHY PARKS
ELIZABETH REESE
MARY ROBINSON
MAY ROSS
MARTHA RAUCH
ANNIE LAURA RUSH
DORCAS RUCKER
ESSIE BELLE RUSSELL
MARY JULIA SASNETT
EUGENIA SCROGGINS
MYRTLE LOU SEARS
FAYE SESSIONS
CHARLOTTE SHELNUTT
EMILY SHELNUTT
KATHERINE SHIVERS
ELSIE SPIERS
ZERA STEPHENS
ELISE STONE
DOROTHY THAXTON
MARIE TUCKER
DORIS WATKINS
MATTIE BELL WEST
FLORINE WILLIAMS
CHRISTINE WYNNE



Mathematics Club



OFFICERS

CLARA GREGG

President

VELMA KEMP

Vice-President

ELIZABETH STOVALL

Secretary

LOUISE REEVES

Treasurer

MISS ALICE NAPIER

Faculty Advisor

MISS ORA OREM

Honorary Member

ROLL

CLARA MAE COWART

MILDRED BROOKS

REBECCA FOWLER

CLARA GREGG

NANADELYN HALL

VELMA KEMP

CLEO JENKINS

MYRTICE LYNCH

MARY ELLA MAXWELL

LOUISE REEVES

ELIZABETH STOVALL

DOROTHY THAXTON

MARGARET THOMPSON

SARA CALLAGHAN

Palladian Club

OFFICERS

DOROTHY PIPER
President

ELIZABETH TUCKER
Vice-President

ELIZABETH GULLEY
Secretary

SALLYE GARRETT
Social Chairman

MARGARET TEASLEY
Membership Chairman

CARROLL BUTTS
Oratory

JULIA ADAMS
Debate

ANNIE MAE WALKER
Writing

MARY DRISKELL
Music

LUCIE DAVIS
Dramatic

MISS ANNETTE STEELE
Faculty Advisor

ROLL

DOROTHY ANDERSON

DOROTHY BARR

CARROLL BUTTS

ELIZABETH GULLEY

VERA HUNT

ELIZABETH TUCKER





Pi Gamma Mu

(National Honor Social Science Society)



OFFICERS

MISS MARY MOSS
President

MISS MARGUERITE JACKSON
Vice-President

DR. GEORGE HARRIS WEBBER
Secretary-Treasurer

ROLL

GERTRUDE ANDERSON
 VALENTINE BARRON
 MARY BURNS
 EURI BELLE BOLTON
 WINIFRED CROWELL
 MELISSA GILES
 MABRY HARPER
 CECIL HUMPHREY
 MARGUERITE JACKSON
 DR. THOMAS B. MEADOWS
 MARY MOSS
 LILLAS MYRICK
 ALICE NAPIER
 MAMIE PADGETT
 MABEL T. ROGERS
 DR. EDWIN HOBART SCOTT
 RUTH STONE
 BLANCHE TAIT
 FRANCES THAXTON
 MRS. MARGARET A. TUTTLE
 MRS. LILLIAN B. WEBBER
 DR. GEORGE HARRIS WEBBER
 MR. F. H. WHITE

MEMBERS AT LARGE

DR. J. L. BEESON
President G. S. C. W.
 DR. AMANDA JOHNSON
Head of Department of History
 DR. FRANCIS DANIELS
Head of Department of Foreign Languages

Science Club

OFFICERS

JULIA REESE
President

MARY BETH BARNETT
Vice-President

MARY E. SMITH
Secretary-Treasurer

MISS LORINE TEAVER
Faculty Advisor

ROLL

MARY BETH BARNETT
SARAH BLOUNT
EDITH BOWDEN
RIGHTON BROWN
LORICE CANAFAX
IDELLE COLLINS
LEDWINA GARRETT
THELMA GOODING
BLANCHE GREENE
ELIZABETH GWINN
MARY LYNN HULL
BLANCHE MCLESKY
ROBERTINE MCCLENDON
VIVIAN MCLENDON
BLANCHE MARSHALL
SALLYE RUTH MEADOWS
MARY MITCHAM
JUANITA MOORE
MARGARET MORSE
DOROTHY PARK
JULIA REESE
PAULINE SIGMAN
ANNIE C. SMITH
MARY E. SMITH
MARY LOU STEPHENS
ELIZABETH STOVALL
DOROTHY THAXTON
IRMA VAUGHAN
MARY WILLIAMS
RUTH WRIGHT
MARTHA BASS
DR. GEORGE H. WEBBER





Spanish Club

OFFICERS

FRANCES MORGAN

President

EDITH MACKEN

Vice-President

MILDRED O'NEAL

Secretary-Treasurer

ROLL

EDITH BOWDEN

ANNA BRIDGES

MARIE CHASTAIN

DOROTHY COLQUITT

CARRIE FRANK CRUTE

BERTHA CUNNARD

NORA GASTON

NANADELYN HALL

ETHEL HARTLEY

CLEO JENKINS

MARGARET LUMPKIN

EDITH MACKEN

FRANCES MORGAN

MILDRED O'NEAL

WYNITA TAYLOR

ELSIE BOYKIN

NELL DAY

NAN HAMBY

ANTOINETTE LAWRENCE

MARY MOON

MARY ELLA MOORE

LOUISE WHALEY

MAYMIE NORWOOD

VIRGINIA RAUCH

GERTRUDE GILMORE

RUTH SENN

Shadows

Shadows are funny things,
Shadows are long things,
Shadows are short things,—
Shadows are anything.
Shadows are black things,
Shadows are grey things,
Shadows are dark things,—
Shadows are nothing.

Forget there is a shadow,
Think of the other things.
Don't fight for a shadow,—
Shadows are nothing.
Strive for the real things,—
A shadow may be anything.

—MARY MOORE.

Ethel, it has been a great pleasure to have known
you at S.S.C. and I'm wishing for you the
greatest happiness that life has in store for anyone.
Please don't forget,
Fannie Sasser
Bonair, Wis.

Dance Programs
and Invitations

Leather Dance Favors
and Novelties

THE CHAS. H. ELLIOTT COMPANY

THE LARGEST ENGRAVING HOUSE
IN THE WORLD



OFFICIAL JEWELERS TO THE NORMAL DEPARTMENT.
OFFICIAL ENGRAVERS TO THE DEGREE AND NORMAL
DEPARTMENTS IN THEIR COMMENCEMENT
INVITATION REQUIREMENT.

SEVENTEENTH STREET AND LEHIGH AVENUE
PHILADELPHIA, PA.



WALTER J. BURKE, *Southern Manager*,
836 Blue Ridge Court, N. E.,
Atlanta, Georgia.

THE UNION DRY GOODS CO.

MACON, GA.



OURS is
the House
of Fashion
where the
girls of
G. S. C. W.
for three
decades
have come
for their
style
information.

*Oh! this is the
only picture I had
put in the annual
so please remember
me by it. I have an
"aged" photograph with
you and hope you won't forget*

*Caroline Hanner
Macon, Ga.*

The Union Recorder

1826-1927

100 Years Devotion to Public
Interest



A Distinctive Printing Service



GEORGIA'S OLDEST WEEKLY
NEWSPAPER

Milledgeville, Georgia

Rastus: "What ho'se powah am
dat flivah?"

Rufus: "Fo' hund'ed million
when she balks."—The Agonistic.

411 Cherry Street

Ries & Armstrong

JEWELERS

RELIABLE GOODS ONLY

Phone 836 Macon, Ga.

G. S. C. W. STUDENTS

The Macon News carries regularly G. S. C. W. news as well as items
of interest concerning other educational institutions in this section.

*You will find it both profitable and interesting
to read every issue of the news.*

COLLEGE NEWS : NEWS OF STATE AND NATION

EXCELLENT FEATURES : INSTRUCTIVE EDITORIALS

THE MACON NEWS

DAILY and SUNDAY

15 CENTS PER WEEK

Snow Dry Cleaning Company

We Cater to Out of Town Customers

"CLEAN WITH SNOW"

Macon,

::

Georgia

THE STORE WHERE QUALITY COUNTS

The Macon Shoe Company

Jay's Department Store

**DRY GOODS, SHOES, AND
LADIES' READY-TO-WEAR**

**ABSOLUTE SATISFACTION OR
MONEY BACK**



Harry Jay

**Eatonton, Ga.
Gainesville, Ga.
Milledgeville, Ga.**

**SMART HATS FOR COLLEGE
GIRLS**

Compliments of

Mrs. Eula Stanley

THE ACME TEACHERS' AGENCY

Is constantly placing teachers.
Our clients' interests are our own
interests.

We Get Results

A satisfied client is our greatest pride.

**702-3 Healey Building,
Atlanta, :: Georgia**

*Variety is the spice of life.
Girls, we have your spice!*

VARIETY GOODS OF ALL KINDS : GIFTS, TOYS, AND
SCHOOL SUPPLIES.

A new lot of local view cards including your school and campus.

Chandler's Variety Store

A. J. Carr Company

☪
**WHOLESALE
GROCERIES**

☪
Milledgeville, :: Georgia

**Milledgeville Telephone
and Telegraph Co.**

☪
Milledgeville, :: Georgia

Teacher (to Sunday school class) :
"Now, boys, in placing your offerings on the plate, I want each to recite some appropriate verse."

Stephen (placing a penny on the plate) : "He that giveth to the poor lendeth to the Lord."

John : "God loveth a cheerful giver."

Teacher : "Very good." (To the next boy, who is inclined to keep his penny) : "Come, Thomas, why do you hesitate? Speak so all may hear."

Thomas (reluctantly) : "A-a fool and his money are soon parted."—
Little Masterpieces.

Let your money work for you. It works while you sleep. When you want a Bank to deposit money in, pick one with a big surplus back of its capital.
This Bank will fill that need.

Capital \$80,000.00 :: Surplus over \$80,000.00

"Bank With Us and You Can Bank On Us"

THE MERCHANTS AND FARMERS BANK
MILLEDGEVILLE, : GEORGIA

A woman was crossing the street when a big dog ran into her with such force that it knocked her down. Just then a light car nearly ran over her. A man, witnessing the accident, came to her assistance. "Did that dog hurt you?" he asked. She looked at him a little dazed and replied: "No, the dog didn't hurt me. It was the tin can tied to its tail."

Compliments of

PERSON'S

Macon, Georgia

The College Girl's Favorite

JNO. H. SHERWOOD

DIAMOND

JEWELRY

WATCHES

Manufacturing

JEWELER and ENGRAVER

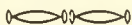
MACON, GEORGIA

Phone 1196 370 Second St.

NEXT TO CAPITOL THEATRE

COLLEGE NEWS . . .

Written by Our Own
Correspondents



FEATURED EACH SUNDAY IN

THE MACON TELEGRAPH

Drink *NuGrape* Flavors

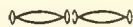
Call
for
Your
Favorite
Flavor



Sold
by
Nu-Grape
Bottlers
Everywhere

OUR LOVE FOR G. S. C. W.
AND OUR APPRECIATION

for the trade from the students, demands
our best attention to your needs.
We are at your service.



R. H. WOOTTEN

Books : Music : China : Sporting Goods, Etc.

BELL'S

There is character in merchandise as well as in people. We would like for you to get acquainted with the character of merchandise that we sell.

WE SELL EVERYTHING FOR THE BEST DRESSED WOMAN.

We Carry a Large Stock of Dress Goods and Silks.

LADIES' FINE SILK HOSIERY,

GORDON, VAN RAALTE, AND

ONYX POINTEX, \$1.65 TO \$3.00

WE SELL VAN RAALTE SILK UNDERWEAR.

We Specialize in Munsingwear and Winget Kickernicks.

We Are Agents for

BRADLEY'S SWEATERS AND BRADLEY'S BATHING SUITS

WE CARRY LADIES' FINE SHOES

\$6.00 TO \$10.00

Use Our Mail Order Department

IF YOU WANT THE BEST, SHOP AT

E. E. BELL'S

MILLEDGEVILLE,

::

GEORGIA

Tip Top Tea Room

Macon National Bank Building
Macon, Georgia

Dinner 12 to 2:30
Afternoon Tea 3 to 6
Supper 6 to 8

Dinner Parties and Card
Parties Arranged for Phone 1046

Wootten Chemical Co.

Milledgeville, Georgia

Dusters
Sprayers
Insecticides
Heavy Chemicals

COMPLIMENTS

—OF—

**Oconee Clay Products
Co.**



Milledgeville, Georgia

THE REASON WHY.

Willy: "I wonder why Mr. Jones
says prayers before meals."

Nilly: "Have you ever seen his
cook?"

LET'S GO.

Joan: "A kiss speaks volumes,
they say."

Jack: "Don't you think it would
be fun to start a library?"

**Blain's Shoe Plant &
Pressing Club**

"We Save Your Sole and Heel
You Well."

"Sudden Service" "Satisfaction"

PHONE 373

Uniform Skirts and Silk Dresses
a Specialty

When in Macon

Store your car with

Stewart Oil Co.

3rd and Mulberry

DAY STORAGE 25c

A woman's mind is as uncertain
as a grapefruit's squirt.—The Wheel.

* * *

Prof. on the street: "Do you know
who I am?"

Stude: "No, sir, but if you can re-
member your address, I'll take you
home."—Agonistic.

HOLE IN WALL SHOE STORE

Just Two Little Prices

2.95
No less

3.95
No more

Ladies' Exclusive Novelties

508 Cherry St.,

Macon

T. H. HALLIBURTON & COMPANY



WHOLESALE

Fruits and Produce



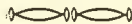
MACON,

:

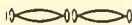
GEORGIA

CULVER & KIDD DRUG COMPANY

“OF COURSE”



AGENTS FOR IDLE HOUR NURSERIES



224 : PHONES : 240

W. A. SPILLER'S CANNERY

675 Broadway

Macon, Georgia

The Home of the Barbecue King Where He Cans His Famous

**Barbecue Pig : Barbecue Hash : Brunswick Stew
Irish Stew and His Famous Barbecue Sauce**

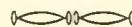
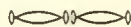
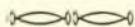
You can buy any of these famous barbecue products
from your groceryman now.

**THE HIGHEST QUALITY CAN GOODS THAT HAS EVER
BEEN PUT ON THE MARKET.**

*There is no equal to my sauce
for all meats and sea foods.*

One Trial Will Convince You We Are Right.

Every can has a blue ribbon and is guaranteed.



W. A. Spiller's Cafe

Corner Mulberry and Third Street
MACON, :: GEORGIA

Where the barbecue king began business several years ago and where he made a success in the barbecue field.

He gives you quality.

He gives you quantity.

He gives you service.

The very best of everything that is eatable is served here.

Open Day and Night

YES, CURB SERVICE, TOO.

W. A. Spiller's Daylight Cafe

Corner Broadway and Pine Street
MACON, :: GEORGIA

**Known the world over as the tourist
eating headquarters**

They drive miles out of their way to eat at this wonderful lunch room for they know they can always get what they want here.

MY MOTTO HERE IS

Quality : Quantity : Service

The meals are the best and the service carries out the rest and that is all any one can expect.

Open day and night and the best curb service there is to be had.

"That is quite interesting isn't it?"
Will you ever forget those Art classes?
Well if you do, don't forget me anyway.

Lane Peter Adams
Columbus, Ga.

"The Leading Bank in This Section"

ESTABLISHED 1884

EXTRAVAGANTLY COURTEOUS : ULTRA-CONSERVATIVE

THE MILLEDGEVILLE BANKING COMPANY

MILLEDGEVILLE, GEORGIA

*A Bank for all the People, All the Time
Whether Visitor or Resident*

THOROUGHLY EQUIPPED TO HANDLE ALL BUSINESS
PERTAINING TO BANKING

OFFICERS

MILLER S. BELL, *President*
E. E. BELL, *Vice-President*

J. E. KIDD, *Vice-President*
MILLER R. BELL, *Asst. Cashier*

DIRECTORS

E. E. Bass : E. E. Bell : Miller S. Bell : F. E. Bone
D. W. Brown : B. I. Fraley : J. E. Kidd

SNOW OR GREECE.

As a ship was leaving the harbor of Athens, a well-dressed lady passenger approached the captain, and pointing to the distant hills, asked: "What is that white stuff on the hills, Captain?"

"That is snow, madam," answered the captain.

"Is it, really?" remarked the lady. "I thought so, but a gentleman just told me it was Greece."—Exchange.

* * *

Newest Synonym: As happy as a Scotchman at a free-for-all fight.

Claude: "How's the soup?"

Clifford: "Not so hot, Claude."

* * *

Lawyer: "Can you tell me if the defendant was expensively garbed?"

Rastus (awaiting): "'Deed she was, sah. Ah knows expensive garbage when ah sees it."

"Bill fell out of his car and broke his peninsula."

"His what?"

"Peninsula, a long neck stretched out to see."—The Blue Stocking.

LADIES' HOSE AND SHOES A SPECIALTY

Trade with

Davis Dry Goods Store

METRO STUDIO

Fine Portraits and

Commercial Prints

By Photography

572½ Cherry St., Macon, Ga.

Lee's Department Store

DRY GOODS, NOTIONS, SHOES,

READY-TO-WEAR

Lee's for Less

Macon : Columbus : Milledgeville

Fitzgerald : Ft. Valley : Forsyth



*The beaten path leads to
the door of the better
Annual Builder-*

FOOTE & DAVIES
ATLANTA



Established
1896

*Pioneers
in the
Building
of
Attractive
Year Books
with
Artistic
Distinctiveness*



WRIGLEY COLLEGE ANNUAL
ENGRAVERS
ATLANTA

Dearest Ethel,

I was just wondering if you were not going to ask me to write in your book. Gee, I have had the most fun up in your room all this year. I am so glad you like a game once in a while, too.

Best wishes and don't forget

Vesta

*Compliments of the Service
and heartiest congratulations
to the young ladies
of G. S. C. W.*



DIXIE ICE CREAM COMPANY

MACON, GEORGIA

Ethel you are a mighty sweet girl
and I've enjoyed knowing &
being with you just heaps -
when you're out in this big old
wood remember your friends at
G. S. C. -
Janice White,
(Soph).

*"Dixie Supreme Ice Cream"
makes rosy cheeks*

PIANOS, VICTROLAS
RECORDS, SHEET MUSIC

**Williams-Breedlove
Music Co.**

*"The House That Furnishes Macon
With Music"*

203 Cotton Avenue. Macon, Ga.

COMPLIMENTS
OF—

HYMAN GLASS

THE WALL FLOWER—MASCULINE

All of our lives we have heard of the feminine wall flower—the very word causes a pain in the heart of any girl because of the anguish it suggests. Why do we not weep or laugh about the wall flower of the unfair sex? Masculine wall flowers may not form such attractive mural decorations as their sisters, but, nevertheless, they are present. The sad and unjust part about the masculine variety is that it may more easily wander away from its place on the wall than the feminine variety, which must remain rooted to one spot.

The masculine wall flower is a source of misery to others as well as to himself. Often he detaches himself from the wall and approaches his victim, bravely or shyly, depending upon the nature of the man and also upon how well he has mastered that rather uncomfortable feeling of having on the fabled cloak of invisibility. When he finally has a partner in his power, he becomes very playful. He bounces her about like a ball; he plays a little game of "bump and run" with the other dancers; and he amuses himself by stepping on her new slippers.


After a heroic struggle the young lady is driven to sending out a distress signal. It is unmistakable—the come hither look, the encouraging smile, and even a wink as a last resort. When a benevolent soul rescues the girl, the wall flower again fades into obscurity and takes his place among his sister wall flowers. It has been rumored that the female is the more deadly of the species, but certainly the originator of that idea was not speaking of wall flowers.

RUTH MITCHAM.

Ethel, see dear,
I have certainly enjoyed
being with you this year
and I do hope I'll see you
again soon.

129

I would draw
my picture for
you but I'm afraid
it might not be
as cute as I really
am.

Love and best wishes,
Dot Holland
Columbus, Ga. 

Burden Smith & Company

Macon, Georgia

WHERE COLLEGE GIRLS LIKE TO SHOP



5/27/29

COLLEGE GIRLS ESPECIALLY WELCOME

Dear Ethel,
Some friendship is one
of the most beautiful things
in the world - "A thing
of beauty is a joy for-
ever" and so I would have
our "Macon's Foremost Department
Store" to wish
for ever.

Greater Dannenberg's

Macon, Georgia

When you go globe-trotting
and pass through the "Gate
City of the South" drop me
a card saying when
and what time. And I'd be
so glad to meet you and maybe
could persuade you to pay Almetto
a visit - Miss Wings Stroud.

ELITE CLOTHES
for
YOUNG WOMEN

—□—

College Girls'
Complete Department

—□—

J. P. Allen & Co.
MACON, GEORGIA

Happiness not even the gods can grant since every man must find it in his own heart.—Selected.

* * *

HORSE LAUGH.

I wish I had a story to fill this little chink
And make the printer's devils sling
all the wicked ink.
I wish I had a story. Oh, ho, it makes me curse.
But since I have no story, you'll have to take this verse.

—Selected.

* * *

"Why are you so melancholy, old man?"

"Joyce rejected me last night."

"Well, cheer up; there are lots of others."

"I know, but somehow I can't help feeling sorry for the poor girl."

—Tit Bits.

Cora Ann: "Granddaddy, were you in Noah's Ark?"

Granddad: "Why, no."

Cora Ann: "Then why weren't you drowned?"—The Pathfinder.

* * *

He: "They say you have been disappointed in love."

She: "Not at all; love is all right."—College Humor.

* * *

They were discussing silk stockings.

"They were invented in Queen Elizabeth's time," said the man who knows everything.

"Yes," commented another, "but they weren't discovered till the twentieth century."—Tit Bits.

* * *

MY 4D

- 4 nice mud-guards
- 4 wheel brakes,
- 4 sleek snubbers
- When she shakes.
- 4 new pistons,
- 4 plugs, too,
- 4 wide doors
- To enter through.
- 4 bright headlights—
- How they shine!
- 4 more payments—
- Then she's mine!

—Arthur L. Lippmann.

* * *

MAYBE THIS ISN'T SO HOT

Shop Assistant (pointing to a row of chickens): "This chicken, ma'am?"

Customer: "No."

"This one?"

"No."

"Well, let me know when I'm getting warm."—Answers.

COMPLIMENTS

—OF—

Colonial Theatre

Newman's Millinery

622 Cherry Street
MACON, GEORGIA

The Ideal Shopping Store for

SMART HATS
SHEER HOSE
COSTUME JEWELRY

Shake, Stranger! — The caller was young and quite charming.

"If you like," said the young man at the desk, "I'll have your poem submitted to the editor."

"No," she answered positively. "I'll read it aloud to him. I prefer to have the editor submitted to the poem."—
Boston Transcript.

How Culture Grows—5.—Who wrote the poem, "Horatius at the Bridge?"

5—John Milton in his "Lays of Ancient Rome."—Glendale (Cal.) paper.

* *

"Ain't we got fun?"

"I don't know; did you bring any?"
—Claw.

MODERN FAIRY STORY.

A co-ed refuses food.
A boy insists (3) times that she partake.
The co-ed still refuses.
He offers to buy her a pennant.
The co-ed refuses to accept it.
The boy asks for ammonia.

Frosh to roommate: "Say, if I am studying when you come back, wake me up."—The Mercer Cluster.

McCLURE OFFICE EQUIPMENT COMPANY

MACON, GEORGIA

EVERYTHING FOR THE OFFICE

G. S. C. W. STUDENTS—

WELCOME

**MANUAL TRAINING SUPPLIES, KINDERGARTEN EQUIPMENT,
PRIMARY SCHOOL GOODS**

CATALOGUES FREE : PROMPT SERVICE

MILTON BRADLEY COMPANY

SALES:
285 PEACHTREE ST., N. E.

OFFICE AND PLANT:
384 FORREST AVE., N. E.

ATLANTA, GEORGIA

All Good Things to

— E A T —

Hendrickson's

Milledgeville, Georgia

BRICK that clink like steel
Are made by McMillan process—
There is no waste in our brick
*We make quick shipments
in any quantity.*

Milledgeville Brick Works Co.

MILLEDGEVILLE, GA.

Est. 1883 by J. W. McMillan

K. G. McMillan

President

Belle McMillan,

Vice-President

GOLD AND SILVER BAR

FRUITS AND VEGETABLES

CANNER'S ART PERFECTED

Delicious Asparagus

Delightful Green Peas

Hawaiian Sliced Pineapple

Peeled Apricots

Strawberries

Raspberries

MAKES HOUSEKEEPING EASY

BELL GROCERY COMPANY

PHONE 263

: DISTRIBUTORS

: PHONE 498

Dearest Ethel:

You know how much I love you already and so it is useless to try to tell you - as

that is my gaze I am wondering what I am going to say that you don't already know.

PHOTOGRAPHS

You have meant here to say that you can now know you have helped me during my

We made all the PHOTOGRAPHS for this annual

times, trouble, and you know they have been many. You have even rubbed

We have all the negatives

on file

shoulders when they hurt. You have helped in so many ways I

YOU MAY ORDER ANY OF THE PHOTOS AT ANY

TIME BY WRITING US.

want to to enumerate them any longer - but you know what they were. I appreciate it so

very much. In other words you have 'worked' me?

Don't forget that you already have the 'charge' to come by to Dublin this summer - and we are expecting you and any other time you can.

EBERHART STUDIO

MILLEDGEVILLE, GEORGIA

I try not to forget me when you begin your school year this

summer. And you'd better not or I'll come down and spoil you

too. Remember me always please

My love always
Grace Fisher