
Colonnade

Special Collections

11-2-1948

Colonnade November 2, 1948

Colonnade

Follow this and additional works at: <https://kb.gcsu.edu/colonnade>



Part of the [Higher Education Commons](#), and the [Mass Communication Commons](#)

Recommended Citation

Colonnade, "Colonnade November 2, 1948" (1948). *Colonnade*. 415.
<https://kb.gcsu.edu/colonnade/415>

This Book is brought to you for free and open access by the Special Collections at Knowledge Box. It has been accepted for inclusion in Colonnade by an authorized administrator of Knowledge Box.

Classes Announce Slipper Chairmen For Coming Event

It's almost Golden Slipper time again at GSCW. This annual contest, designed to discover freshman and sophomore talents, will be held this year on November 20.

Chairmen and committee heads for the event have been announced. They are:

Dodie Hammond, freshman chairman; Patsy Montgomery, Judy Taylor, Nell Thomas, play; Mary Ellen Butler, props; Judy Bowman, lights; Evelyn Knight, flats.

Kathleen Benefield, theme; Corliss Aaron, makeup; Connie Harrison, costumes; Joann Funk, entrance; Mozelle Phillips, programs.

Bertie Johnson, posters; Leclia Horne, displays; Betty Jean Cook, songs; Daryl Tumlin, band.

Juniors as advisors will be: Gwen Bailey, chairman; Jane Macrae, play director with Jean Minter as assistant; Beebe Kent, and Carol Jones, play writers.

Celeste Smith and Frances Webb, flats; Jackie Durden, props; Elizabeth Bennett and Ann Weldon, lights; Jjanita Mosely, makeup; Marguerite Williams, themes and costumes, with Dot Hodges as assistant.

Willie Smith, programs; Betty George Clark, posters; Debbie Holst, display; Mary Alice Howard, songs; Anna MacMillan and Mary Jordan, band.

Dot Pinkston, freshman general chairman; Dot Ward, play coordinator; Mary Lancaster, stage manager; Barbara Weber, flats; Jean Hawkins, makeup.

Avis Register, lights; Mary Quinn Harvey, sound; Betty Campbell, props; Betty Palmer, Emily Casey, Jean Munns, play adaptation.

Gloria Nash, theme; Fran Holst, entrance; Les Clark, posters; Freddie Hewitt, display; Barbara Johnson, display; Jackie Becton, songs.

Senior advisors are: Betty Matthews, general chairman; Doris Pollard, play coordinator; Sonny Johnson, play director; Betty Broach, stage manager; Martha Lou Gable, flats.

Clarice Stton, makeup; Iva Paulk, costumes; Mary Mickelson, lights; Ann Mainor, sound; Joyce Mills, props; Doris Pollard, play adaptation.

Cathy Clark, theme; Janet Slaughter, posters; Lou Crawford, display; Janie Sims, songs; Earla Poulnot, programs.

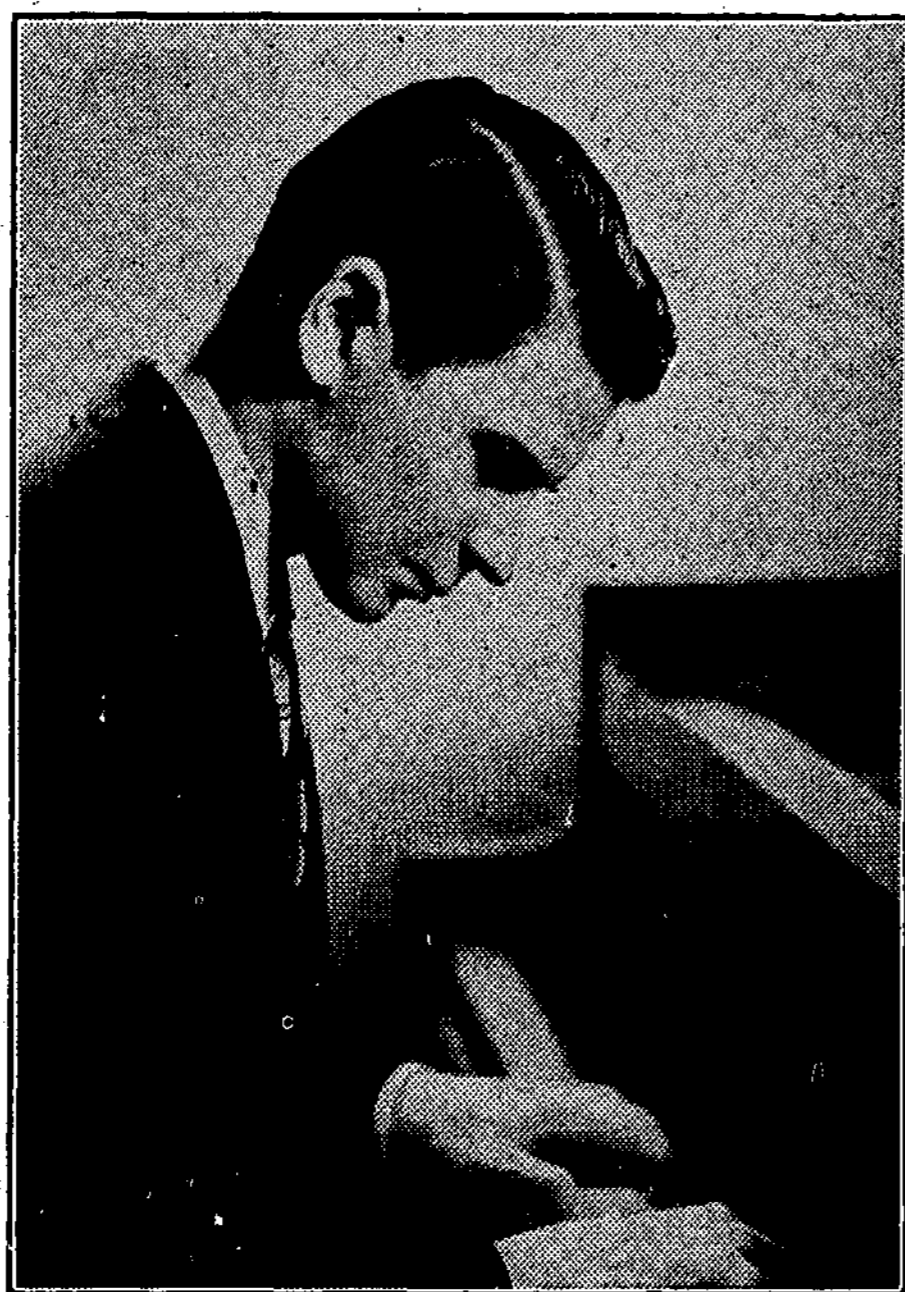
Sims, Minter To Head 1948-49 Corinthian

Betty Jane Sims has been elected editor of the 1948-49 Corinthian. Jean Minter was chosen business manager, and Barbara Ingram was elected as circulation manager.

Other new members of the staff include Anola Lee, assistant editor; Polly Miller, assistant business manager; and Eleanor Coffey, assistant circulation manager.

Miss Hallie Smith is the faculty advisor for the Corinthian.

Hammond, Cook, Evans, McLendon, Dean Contend For Frosh Presidency



MR. JANIS

Byron Janis, Musician, To Appear Here Wednesday Night

Byron Janis, 20-year-old pianist, will be featured on the GSCW concert series Wednesday, November 10, at 8:30 in Russell Auditorium. His appearance here is sponsored by the Milledgeville Community Concert Association headed by Father John D. Toomey.

GFCW Holds Meeting At GSCW Nov. 12

GSCW will be hostess to members of the Georgia Federation of College Women on Nov. 12. Lou Crawford, president of Rec on campus, will preside at all of the meetings.

Louise Stephens, a senior at GSCW, is a member of the executive board of GFCW. Emily Carlton, Wesleyan, is president of the organization.

Students Select Akin At LaGrange

Huanne Akin of Covington, a sophomore at GSCW, was elected World Christian Community chairman of the state Methodist Student Movement at a conference held at LaGrange College October 29-31.

This is the second year a GSCW student has been chosen for the state council. Last year Oudia Woods of Newington, was elected vice-president of the movement.

Mr. Janis, now in his second season of coast-to-coast concert tours and performances with major symphony orchestras, was born in Pittsburgh.

His parents liked music, but were not musicians, and his talents were discovered by his kindergarten teacher. His parents encouraged his study of music, and he proved his ability by giving his debut recital in Pittsburgh when he was only 9.

As star of his own radio program on NBC and a frequent soloist with the NBC Symphony Orchestra under the baton of Dr. Frank Black, Mr. Janis has been acclaimed by such top-flight musicians as Toscanini, as well as applauded by severe critics.

Musical star of the Magic Key radio program at the age of 10, and NBC Symphony soloist at the age of 16, Mr. Janis proved himself an artist of outstanding talent. At the suggestion of Joseph Lhevinne, Mr. Janis began work with Adele Marcus at New York's Chatham Square Music School, where he really began to work on his career in earnest.

Freshman Class To Elect Officers Today; Runovers To Be Thursday

Elections for freshman class officers will be held today. Runovers will be held Thursday.

Couple To Present Exhibit Here Nov. 12

A joint exhibition of the works of Mary L. Thomas, a GSCW graduate, and her husband, Howard Thomas, will be shown in the Porter Fine Arts building for two weeks, beginning November 12.

Mrs. Thomas is a native of Hazlehurst, Ga. She graduated from GSCW with a two year diploma in 1924, received her B.S. degree from GSCW in 1930, and her M.A. from Duke University in 1935.

Mrs. Thomas has taught art at Woman's College University of North Carolina in Greensboro, N. C.; Stephens College in Columbia, Mo.; and University of Georgia in Athens.

Among the awards and exhibitions of Mrs. Thomas are the Purchase Award, Southern States Art League in 1942; watercolor award in Georgia Artists' Exhibition in 1946, first place in Southeastern Annual Exhibit in 1948, and she has exhibited in R.C.A. Gallery, New York, Pennsylvania Academy and others.

Permanent Collections

Some of the places she is represented in permanent collections are: The Virginia Museum, Richmond, Va.; Holbrook Colbrook collection, University of Georgia, and the High Museum of Art in Atlanta.

Mr. Howard Thomas is a native of Ohio. He received his education at Ohio State University, Chicago Art University, University of California, and the University of Chicago.

Mr. Thomas is secretary and treasurer of the Southern States Art League. He has exhibited in national exhibitions since 1935.

He is represented in permanent collections at the University of North Carolina, University of Georgia, Agnes Scott, and various others.

Awards

Among his many awards are Milwaukee Journal Prize, oil; Association of Georgia Artists, 1945, and first prize, watercolor, 1946, Association of Georgia Artists.

Mr. Thomas at present is professor of Art at the University of Georgia.

The exhibit will be open from 9 a.m. to 5 p.m., week days, and from 9 a.m. to 12 noon on Saturdays.

APPRECIATION HOUR

Because of various other activities, appreciation hour will be discontinued until December 1. Mrs. J. R. Rogers will appear on the program at that date. Mrs. Rogers was formerly Miss Barbara Connally, and is a member of the music staff at GSCW.

Candidates for president are:

Betty Jo Hammond, Atlanta, who attended Napsonian High school, where she was a cheerleader, worked with YWCA, dramatics, and school paper; Betty Jean Cook, Chamblee, winner of the State Home Economics contest in 1946. She was a member of the Beta Club and state president of the 1947-1948 FHA, and "Girl of the Year" in her community for the past year; Patsy Evans, Brunswick, majorette in the Glenn Academy band and state tennis champion of the year; Eleanor McLendon, Fitzgerald winner of several awards in essay writing and editor of her school newspaper.

Joyce Dean, Decatur, worked on the school annual and school plays. She was a member of Student Council and the Athletic Council.

Vice-President

Nominated for vice-president are: Linda Buck, Decatur; president of the athletic council at Girls High, winner of three southeastern championships, two state titles, and three city titles in swimming; Sara Browning, Brunswick, who attended Glynn Academy; and Nita Stephens, Atlanta, who worked on Student Government, dramatics, and was a member of the Beta Club.

Secretary

The three girls chosen for secretary include: Sunny Banks, Shady Dale, who was a cheerleader and took part in dramatics; Corliss Aaron, Swainsboro, won first place in district reading contest, worked on the annual; Leclia Horne, Coral Gables, Fla., active in church work, plays basketball and tennis, and is a member of the glee club.

Treasurer

Nominees for treasurer are: Betty Moye, Waycross, plays basketball, is a member of Beta club and interested in dramatics; Ann Garrett, Swainsboro, worked on school paper and was a member of the literary society.

Judiciary Representative

A representative to Judiciary will be chosen from: Carolyn Stubbs, Atlanta, plays basketball; and Connie Harrison, Cordele, is active in dramatics, swimming, and is a member of the glee club; Carolyn Williams, Moultrie, sang in chorus and was on student council.

Council Representative

For representative to Student Council are: Nell Hall, Sylvester, high school plays, member of glee club, and plays basketball; Kathleen Benefield, Arabi, worked on school paper, dramatics, and glee club; Enid Paschall, Washington, plays basketball, worked on school paper and dramatics.

The COLONNADE

Published bi-weekly during the school year, except during holidays and examination periods by the students of the Georgia State College for Women, Milledgeville, Georgia. Subscription price, \$1.00 per year. Member of Associated Collegiate Press, National Advertising Service, and Georgia College Press Association.

Printed by The Union-Recorder, Milledgeville, Ga.

THE STAFF

EDITORIAL STAFF

Editor-in-Chief.....Betty Eidson
Associate Editor.....Jane Macrae
News Editor.....Polly Brannan
News Staff:
Latrell Barrentine, Gena Gwin, Ann Mainor,
Margie Arrant, Ann Peterson
Club News Editor.....Celeste Smith
Club News Staff:
Nellie Fay Thomas, Mobby Preacher, Charley
Bleworth
Feature Editor.....Carol Jones
Feature Staff:
Minnis Alderman, Barbara Thompson, Patsy
Montgomery, Doris Townsend, Millie Street
Art Editor.....Mary Ham
Make-Up Editor.....Dorothy Turner

BUSINESS STAFF

Business Manager.....Frances Jackson
Associate Business Manager.....Jean Crittenden
Circulation Manager.....Virginia Coffee
Business Assistants.....Jo Ann Suter, Peggy Shirley
Exchange Editor.....Kathleen Benefield
Typists:
Barbara Dunson, Bobbie Vance, Mimi Able

Every Jessie Should Know

By CAROL JONES

So Betty didn't speak to you when she passed you in the hall. What did you think then? That maybe she had something on her mind, that she was in a hurry, or that maybe so many people were around that she couldn't possibly speak to everybody as she passed by? Or did you think, "Humph! She snubbed me cold, and if that's the way she feels about it, she'll get the same treatment from me."

Suppose you thought the latter, and from that moment on, relations between you and Betty were decidedly strained. And because you and Betty were no longer friends, your friends could not be both yours and hers, but had to choose between you. Two groups would arise, each disliking the other, forgetting that they had once been friends. Forgetting, even, the reason why they were enemies.

And no wonder they forgot it, because it was so small and unimportant. And, yet, because someone allowed a petty happening to make such a difference, they missed a golden store of friendship and companionship with those who had become their enemies.

What a shame, you say? Yes, it is a shame that time, which is so short should be wasted in petty jealousies, anger, and hatred. A person who is petty makes himself as unhappy as he makes others, perhaps more so. When there is something in everyone that is likeable, why waste time in looking for his faults? Look instead for something about him that you can like. It's not hard at all, and you'll find a great deal more pleasure in life that way.

A Letter From Jessie Bell

Ed's Note: This all started when Jessie Belle walked in the office one day and said she had a story to write of "vittle interest" to every girl on campus. So, without further words, I present Jessie Belle to you.

Me, I'm a born optimist. And sister, I'm proud of it. Take a look at all those people who're always worrying about something. If it's not politics, it's studying; and if it's not that, it's something else. What idiots these mortals be, as he immortal Shelley once said.

Now you take me. Why, only the other day I was talking to my roommate about this very same subject. I said to her, "Maisie, I wish I could tell people about my system for not worrying about things. Just think of all the good I could do."

So Maisie, who is really a very smart girl, said, "Why dantcha put in in the Colonnade? I hear they'll print anything."

So here I am.

Now folks, this is the way I look at this problem. First, you gotta quit worrying about things like the Berlin Criziz. Let them people in Washington worry about it. That's what they get paid for.

And if you follow my advice, don't vote in elections. In the big national ones like we're having today, let the folks back home vote if they want to. They didn't have to send home for no ballot by registered mail and you gotta remember these things add up. Cigarettes cost money these days.

Now when it comes to campus elections, I work it this way: I usually don't vote. Or if I do, I hav a sure fire trick. Always vote for the kid with the prettiest name. See how simple it all is? This way if the people that get elected don't do such a hot job, you can raise Cain later—it causes more excitement that way.

And by all means, don't listen to the news on the radio, and don't read the front page or the back page either. Just go ahead with your bridge game and forget all about it. Just remember that nothing those people in the outside world can affect you. You gotta remember you are a college woman now. So you just aint got the same problems the proletariats got. And if there is another war? You won't be drafted. See, you just got no cause for worries.

And don't believe those folks who'll say you're livin' in an ivory tower. So what? It sho is convenient at times, and besides, look how much worrying you've cut out.

Thanks, you people. I hope this system'll help you as much as it has me. I gotta run now—This kid I didn't vote for last spring is doing some things I don't like. Guess I better go raise a little Cain and tell her what's what. See what I mean? More excitement!

A Bow For CGA

Congratulations to CGA! We were pleased to hear that the point system is now being revised. It is a greatly needed and much overdue job. A poin system that is out of date has completely lost its effectiveness.

Our present system lists offices which do not exist now. In some cases an office which has had an increase in responsibility has not had an increase in points. And some newly formed offices are not listed.

We hope that those undertaking this task will do a complete job and investigate thoroughly the positions to be listed. Our point system can then be a useful and effective machine.



Oh, teachers are fun if you can isolate them, but just put two together and they act like faculty members again.

Letters To The Editor

October 23, 1948.

Editor, The Colonnade,
Georgia State College for Women,
Dear Editor:

On the editorial page of the first issue of the Official Bi-weekly Voice of GSCW students there was a space-filler expressing a desire for letters to the editor. My crusading spirit immediately grasped the opportunity: I shall do my duty to world and to The Colonnade. On further perusal I found that the object of said letters should be to rebut editorials. Rising to the occasion, I read the editorial page. Now what frustrated me was that I could find nothing to rebut.

My problem is that I find it difficult to argue when nothing has been said.

I realize that being an "official voice" somewhat thwarts our publication. As a solution I suggest an "unofficial voice." Do I see a group of enterprising young college girls?

Factory workers are required to produce piece-rate, say fifty pieces an hour, no more, no less. Must our newspaper mean no more than piece-rate, say so many words, no more, no less?

BEEBE KENT.

Angie And the Amoeba

Once upon a time, not too long ago, a freshman came to GSCW. At first everything was fine—that is excluding placement tests, physicals, homesickness, and term papers.

But recently, tragedy entered the picture. Our freshman, whom we shall call Angie, was discovered in her room muttering, "How many legs does an amoeba have? How many legs DOES an amoeba have?"

It was all quite sad—it seems that Angie was a joiner, so she promptly joined everything on campus. She was a member of the Night-Out Club, the New Look Club, and many, many others. She was even an officer of I L T G T B B F, better known as I'd Like to Get to Bed Before Four Club.

But unfortunately, what with only 24 hours in one day, unless Congress changes it, Angie had no time to do anything except attend club meetings.

And that's where the trouble started, for the day of her first midterm, the only thing Angie could think of was that phrase she picked up at a Prevention of Cruelty to Amoebae Club meeting, "How many legs does an amoeba have?"

Ellen Schmidt Arrives Here From Germany To Begin Studies

Ellen Schmidt is a little too far from home to take all three weekends, but she says GSCW is like home already.

Ellen, a student here this year, formerly lived in Berlin, and could teach a course in travel-education or language on our campus. She began her studies in Berlin and was transferred to Bologna, Italy. A year later she studied in Rome, Italy, and from there to Strasbourg and Poitiers, France. She returned to Bologna, Italy, and later received her Ph. D. from Berlin University.

She was traveling in Germany, Italy, and France during the war, and spent 1944 in Berlin.

Having numerous dealings with international discussion groups, Ellen met people from the American education group who helped her in coming to America. She also worked with the German Youth Organization.

"I am here first to enjoy life, then to learn the American education methods," she stated recently. She expects to work with the German Reform School-Program when she returns.

She likes best the college girls in multi-colors or the "new look"; she likes least the lack of academic freedom. In Berlin a student is not compelled to attend classes or do anything except pass the final examination. Some of the famous German professors have five hundred students in a class.

Ellen believes the food is better and more plentiful here. She is afraid she is gaining too much weight. She says she is eating enough for her folks, who do not have as much as she does.

It amazes Ellen that one-fifth of the people in Georgia cannot read and write. Every country has its faults and none are perfect, but she says, "America is wonderful."

Ellen, who is sponsored at GSCW by the Rotary clubs of Georgia, plans to transfer to the University of Georgia in March.

REMEMBER!

The Scholarship Ball will be held November 6, in the big gym.

Dormitories Elect Officers For Year

Dormitory officers for the year have been elected as follows:
Ennis—President, Philippa Kandle; vice-president, Ann Clements; secretary, Lyda Moore; treasurer, Helen Donnan.
Sanford—President, Ketus Conner; vice-president, Natalie Hymes; secretary, Twink Star; treasurer, Martha Phillips.

Atkinson—President, Elizabeth Bennett; vice-president, Jackie Bejon; secretary, Amy Bartlett; treasurer, Dot Bohannon.

Bell—President, Betty Goodman; vice-president, Jane Grier; secretary, Dot King; treasurer, Billie Ann Davis.

Beeson—President, Ann Weldon; vice-president, Barbara Sue Johnson; secretary, Patsy Allred; treasurer, Joan Malcomb.

Mayfair-Mansion—President, Wilena Smith; vice-president, Mary Jordan; treasurer, Jean Lane; secretary, (to be elected).

The officers of the freshmen dormitories will be announced at a later date.

Students To Form UWF Chapter Here

A group of GSCW students are working on the organization of a United World Federalist chapter on the campus. As soon as possible, the plan to join the national organization.

A number of projects are being planned including an opinion poll to find out if students believe in world federation. Also, on the agenda is a discussion by members of a deputation from the University of Georgia on what their chapter is doing.

The GSCW group plans to meet bi-monthly and will elect officers at the next meeting. Sallie Harrell is the temporary chairman.

Chapters of the UWF are found at the University of Georgia, Agnes Scott, Emory, Mercer, and Wesleyan.



Some of the members of the Steering Committee for Religious Emphasis Week relax with a coke in the Student Union. Left to right they are: Beebe Kent, Frances Johnson, chairman; Dot Francis, and Anola Lee.

REW Brings Outstanding Leaders Here For Seminars, Discussions

Religious Emphasis Week, October 24-29, brought to our campus five outstanding Christian leaders, the Rev. James E. Graham, Dr. B. D. Napier, the Rev. James Stertz, the Rev. Arthur Gilmore, and the Rev. Maurice Shean. These men conducted seminars, dormitory discussions, and personal conferences to the theme, "We Would Be Building."

Mr. Graham, a native of Rock Hill, S. C., received his A. B. at Presbyterian College, Clinton, S. C. He furthered his education at the Columbia Theological Seminary, Decatur, Ga., where he received his B. D., and at the Union Theological Seminary, Virginia, where he obtained his Master of Theology degree. Mr. Graham has held pastorates in the Presbyterian Church, Troy, Ala., First Presbyterian Church, Sylacauga, Ala., and at present at the First Presbyterian Church, Savannah. He also was student pastor at the State Teachers College, Troy, Ala.

Dr. Napier was born of missionary parents in China, and attended grade and high school in Nanking, Shanghai, and Kobe. Having completed his undergraduate work in the South, Dr. Napier obtained his B. D. and Ph. D. degrees from Yale University. He was minister of music at the Westport (Conn.) Congregational Church and the First Congregational Church, Bethel, Conn. At the Union Congregational Church, Grafton, Mass., he was parish minister. Dr. Napier has done college work at Alfred University, N. Y., where he was chaplain, and at the University of Georgia where he is at present chaplain and head of the department of religion. Honors and memberships which have been awarded Dr. Napier include two Brothers Graduate Fellowships, Yale; B. D. degree cum laude; Fellow of National Council on Religion in Higher Education; Pi Gamma Mu; member of National Association of Biblical Instructors and the American Association of University Professors.

Mr. Stertz, a native of St. Louis, Mo., attended the William Jewell College, where he received his AB degree, and the Southern Baptist Theological Seminary, there obtaining his Ph. D. degree. Positions which Mr. Stertz holds are ordained minister of the Southern Baptist Convention, Director of Religious Activities at Mercer University, and professor of Old Testament history in the Roberts School of Christianity, Mercer University.

Mr. Gilmore received his M.

A. at Emory University. For 7 years he was director of Christian Education at the Galloway Methodist Church, Jackson, Miss. He also instructed Bible and Religious Education at Millsaps College, Jackson, Miss., for two years. At present, Mr. Gilmore is Executive Secretary of the North Georgia Conference of the Methodist Church.

Mr. Shean attended the public schools in New York City and then went to the New York University. He completed his education at St. Mary's College, Kentucky. Seminary studies were done at St. Meinrad's Seminary, Ind. Mr. Shean's education centered around the study of philosophy, sociology, and music. For the past four years, he has been chaplain of the Newman Club, Winthrop College, Rock Hill, S. C., and at present is also chaplain for the Southeastern Regional Conference of the YCS. Mr. Shean has been engaged in clerical activities, having had charge of three small churches, and is

THE COLONNADE November 2, 1948

Skill Clubs Announce New Membership

Thirty students have become new members of Folk Club, Miss Alethea Whitney has announced. The girls are:

Ruth Anderson, Betty Brantley, Rosalyn Brantley, Winifred Council, Jean Dobbs, Francine Ennis, Barbara Fleming, Gwen Gay, Martha Geier, Freddie Hewitt, Joanne Hicks, Dot Lindsey, Miriam McCullough, Martha Norris, Thad Pitt.

Louise Pittary, Betty Jane Randall, Anne Reichert, Jackie Rooks, Jo Ann Suter, Georgia Taylor, Judy Taylor, Doris Townsend, Barbara Tregalis, Phoebe Trulock, Katherine Willis, Elizabeth Bennett, Becky Dennard, Sara Sue Wansley.

Miss Smith announces that 18 students have become new members of Penguin Club. These girls are:

Phillapa Kandel, Betty Harris, Milldene Burnham, Mary Quinn Harvey, Nona Woffred, Les Clark, Polly Powell.
Daryl Tumlin, Linda Buck, Joyce Dean, Nell Justice, "Dodie" Hammond, Polly Miller, Elizabeth Kendall, Ann Shelton, Ann Wilson.

The Junior Modern Dance Club, under the direction of Dr. Barbara Beiswanger, has 26 new members. These girls are:

Betty Moye, Wandeleen Boyd, Beth Glover, Teddy Peterson, Carolyn Clements, Dorothy Turner, Myra Hill, Millie Street, Genevieve Aspinwall, Dorothy Coleman, Sue Smith, Jackie Rooks, Gena Sullivan, Joan Constantineau, Joanna Funk, June Coleman.

Ann Clements, Ann Shelton, Helen Lewis, June Connell, Mary Gidden, Birdie Johnson, Gertie McMurray, Dell Morris, Kitty Marie Smith, Dolores Zittrouer.

at present Superior of the Oratory of St. Philip Neri at Rock Hill, S. C.

McMILLAN'S SHOE SERVICE

Conveniently Located on Wilkinson Street—Next to Protective Cleaners

FREE DELIVERY

CAMPUS THEATRE

"ALWAYS THE BEST IN ENTERTAINMENT"
Sunday and Monday—November 7 and 8



Thursday and Friday—November 11 and 12

COLOR BY TECHNICOLOR

FOREVER AMBER

LINDA DARNELL • CORNEL WILDE
RICHARD GREENE • GEORGE SANDERS

For the girls up at GSCW
There is one man you all ought to know.
If spots on your dresses should trouble you,
He's the person to whom you should go.

If that dress that you always thought dreamy
Looks dingy, or starts into sag;
You can have it made perfectly "creamy"
At DEMPSTERS—down on the main drag.

So get out that sad looking sweater,
Or the skirts with the hems you let down;
And you'll find that we do them much better,
Than all other places in town.

DEMPSTERS

"Personalized Service"

Dry Cleaning — Alterations — Laundry

West Announces New Members For 'Call It A Day'

Miss Edna West has announced new additions to the cast of "Call It a Day," which will be presented here by the College Theatre Thursday and Friday.

Dr. M. F. Nunez, who has appeared in two previous College Theatre productions, will portray Frank Haines in this comedy. Dr. Nunez is on the staff of the State Hospital.

Major Frank H. Kaler, who is playing the role of Paul Francis, the artist, is appearing for the first time in Milledgeville with the College Theatre. He and his wife, who is a member of the Peabody faculty, were active in the Vagabond Theatre in Baltimore, Md., and the Community Little Theatre in St. Augustine, Fla. Major Kaler teaches English at GMC.

Charles Smith of Tennille will play the role of Alistair Brown.

John Gore, assistant professor of speech at GSCW, has done both technical work and acting with the Wayne University Theatre, Workshop Civic Players Will-O-Way Play House and others. Mr. Gore will portray the role of Roger Hilton.

Joe Trapnell of Milledgeville will have the role of Martin Hilton.

The name of the GSCW student who is playing the role of Vera, the maid, will not be released until the opening night performance of the play.

Crew Heads Named For 'Call It A Day'

Crews and crew-heads for "Call It a Day" have been announced. They are:

Lighting: Daryl Tumlin, Ann Garrett, Mary Mickelson, Barbara Tregellas, Myrtice Wells.

Costumes: Dolores Beechler, Winfred Council, Wilmarose, Nicholson, Betty Holland, Yvonne Michel, and Barbara Tregalis.

Props: Jane Macrae, head; Doris McPherson, Joan Faulkner, Bobbie Lane, Gloria Nash, Dodie Hammond, Celeste Smith, Jane Bailey, Betty Campbell.

Make-up: Barbara Ingram, head; Angella Tanner, Joyce Roberson, Ruth Womble, Ellen Paschall, Celeste Smith, Dodie Hammond, June Connell, Sue Riesby, and Jo Morris.

Publicity: Jean Minter, head; Angella Tanner, Katherine Willis, Betty Moye, Ruth Womble, Betty Hays, Polly Brannan, Glenn Methvin, Gladys Bairds, Miriam Abell, Alice Ann McKinley, and Birdie Johnson.

Sound: Celeste Smith, head; Frances Webb.

Scenery: Jo Morris, Marion Killingsworth, Nancy Eleton, Virginia Alford, Betty Hays, and Kathryn Sholar.

The Book Corner—

What have you been reading lately?

Mr. John Gore, dramatic faculty: "Call it a Day," by Dodie Smith.

Miss Edna West, dramatic faculty: "Call it a Day," by Dodie Smith.

Wylene Edwards, "Call it a Day," by Dodie Smith.

Betty Moye: "Call it a Day," by Dodie Smith.

Jane Macrae: "Call it a Day," by Dodie Smith.

Miriam Crawford: "Call it a Day," by Dodie Smith.

Mary Ellen Stallings: "Call it a Day," by Dodie Smith.

Phi Sigma Selects 11 New Members

Phi Sigma, an honorary organization for freshman and sophomore girls with outstanding scholastic averages, has extended invitations to 11 sophomores. These girls include:

Barbara Webber, Decatur; Betty Palmer, Atlanta; Jean Muns, Rentz; Jean Hawkins, Atlanta; Wanda Gray, Cannon; Jackie Fowler, Acworth.

Josephine Edwards, Milledgeville; Barbara Dunsan, Commerce; Emily Casey, Cedartown; Norma Bennett, Claxton; and Patty Ruth Allred, Rome.

Officers of the club for this year are Jean Nutt, president; Billie Hiers, vice-president; Dorothy Turner, secretary; and Joan Landstrum, publicity chairman.

Auburn Players To Appear Here Nov. 12

The Auburn Players will present "The Imaginary Invalid," by Moliere here on Nov. 20. Only season ticket holders for College Theatre productions will be admitted to the play, which is being sponsored by College Theatre on campus.

Faculty Forecast

President Guy Wells will address the Dublin P-TA on November 9.

Dr. Mildred English will speak to Delta Kappa Gamma in Milledgeville on November 18.

On November 4, Dr. Katharine Holtzclaw will be the speaker at the Atlanta Woman's Club.

Dr. George Beiswanger will speak to the Future Homemakers of America in Summitt on November 6.

Mr. Bernice McCullar will speak at the Business and Professional Women's banquet November 2. On the 6 and 7, she will be the speaker at Mercer University in Macon.

CHAPEL PROGRAMS

Friday, Nov. 5—No chapel due to college play sets.

Monday, Nov. 8—Student body meeting

Friday, Nov. 12—No chapel due to vocal clinic

Monday, Nov. 15—Literary Guild will present a program for National Book Week

Friday, Nov. 19—Golden Slipper skits

Friday, Nov. 26—No chapel due to Thanksgiving holidays

Atkinson To Give Reception Dec. 12

Atkinson will have its traditional Christmas reception Sunday, December 12, from 4 to 6. Mrs. Marie F. Martin, house-mother, has announced. Dates, parents, and faculty members will be invited.

Jane Macrae will be mistress of ceremonies for the occasion. Jean Crittenden will be in charge of decorations, and Beebe Kent will be in charge of records.

Officers of the dormitory will be in the receiving line. They are Elizabeth Bennett, Barbara Lindsey, Dot Bohannon, and Amelia Barton.

Singers for the afternoon will be: Bobbie McKinney, Harriet Casteel, Margie Joyner, Bobbie West, Joan Faulkner, Jackie Becton, Lanelle Edmondson, Rosmary Albritton.

June Grier, Ann Richey, Gwen Baily, Billie Holloman and Dot Ward will be the accompanist.

Pianists for the occasion are: Lanelle Edmondson, Jackie Becton, Mary Fay Teasley, and Bobbie West.

Students To Attend BSU Convention

A group of Baptist students will go to Mercer this week-end to attend the annual state B.S.U. convention.

The conference, which will last from Friday evening to Sunday afternoon, will feature outstanding speakers and conference leaders. Mrs. C. B. McCullar of GSCW's Public Relations department, will be on the program.

Those attending the conference from GSCW are:

Joan Carter, Dolores Wheeler, Gloria Nash, Emily Crumbley, Ellen Paschall, Dot King, Kiki Yarbrough.

La Verne Womble, Olive White, Ouida Collins, Agatha Moody, Jean Gilland, Annie Ruth Hawkins, Lazelle Chronister, Martha Vassar.

Kitty Holloman, Eleanor Coffey, Ruth Womble, Vivian Dantzer, Mildred Holcomb, Jean Warren, Joyce Blocker.

Eileen Tabor, Dot Bohannon, Minnie Alderman, Emily Ann Watson, Charline Stanfield, Ann Clements, Ruby Shelton, June Graham, and Mary Ellen Anderson.

"Between takes of my new picture, THE LUCK OF THE IRISH, I enjoyed many CHESTERFIELDS. They're Milder... It's MY cigarette."

Tyrone Power

STARRING IN
THE LUCK OF THE IRISH
A 20TH CENTURY-FOX PRODUCTION



Kay Irene Johnson ABC GIRL of Ohio State says—
"I smoke Chesterfields because they have a fine taste all their own and stay really MILD from one end to the other."

MORE COLLEGE STUDENTS SMOKE CHESTERFIELDS
than any other Cigarette... BY LATEST NATIONAL SURVEY

A B C CHESTERFIELD

MAKE YOURS THE Milder CIGARETTE... *They Satisfy*