

---

Colonnade

Special Collections

---

1-27-1956

## Colonnade January 27, 1956

Colonnade

Follow this and additional works at: <https://kb.gcsu.edu/colonnade>



Part of the [Higher Education Commons](#), and the [Mass Communication Commons](#)

---

### Recommended Citation

Colonnade, "Colonnade January 27, 1956" (1956). *Colonnade*. 485.  
<https://kb.gcsu.edu/colonnade/485>

This Book is brought to you for free and open access by the Special Collections at Knowledge Box. It has been accepted for inclusion in Colonnade by an authorized administrator of Knowledge Box.

# The Colonnade

January 27, 1956

Georgia State College for Women, Milledgeville, Georgia

Vol. XXXII, No. 7

## Guests To Arrive High School Seniors View Campus

An expected 450 seniors from various high schools over the state will be G.S.C.W.'s guests February 10-12. These students have been invited to inspect the cultural and intellectual opportunities afforded at this college. A very entertaining and well-rounded program has been outlined to introduce the college's academic and extra-curricular work.

Some of the high lights of this program are: visits to college classes, G. M. C. Battalion Review at Davenport Field, G. M. C., modern dance recital, pajama parties in the dormitories, taps, Open House at the Old

Governor's Mansion, A Cappella Choir Presentation, A Speech by Dr. Stanford on the subject, "So You're Going to College", Play Day at the college gymnasium, and a lecture by Emily Kimbrough, a renown writer, commentator and lecturer.

The faculty members will be in their offices at specified times to discuss the various college programs and all meals will be served at the college dining hall.

On Sunday, the guests will attend the church of their choice in Milledgeville. They will have Sunday dinner in the dining hall after which the week-end program will be officially ended.

Williams Lofton, Colquitt.

### BUSINESS ADMINISTRATION

Elizabeth Lott Dawson, Milledgeville; Martha Lee Dye, Sandersville; Patricia Griffin, Savannah; Patricia Sikes, Claxton; Yvonne Watson, Milledgeville;

### SOCIAL STUDIES

Martha Faircloth, Abbeville; Jean Stokes, Empire

### ENGLISH

Jane Peel, Milan

### SPANISH and MATHEMATICS

Manolita Fernandez, Elberton;

### HOME ECONOMICS

Naomi Cogger, Thomasville (internship) Eleanor Eubanks, Atlanta; Peggy Spell, Brunswick; Etta Lee McDaniel, Glenwood; Barbara Shellhorse, Cartersville; Doris Stone, Hoboken;

### MUSIC

Betty Churchwell, Vienna; Ida Jane Elrod, Tifton; Betty Jane Henderson, Monticello; Nan Smith Hoover, Brunswick; Edna Giles Marshall, Manchester; Barbara Rogers, Milledgeville.

### ART

Hannah Ray, Harlem

## Student Teachers Practice Program

This quarter, thirty-seven GSCW girls began their practice teaching in various laboratory school classrooms and in room off-campus centers. The GSCW Teacher Education Program provides supervised practical teaching experience. Classroom teachers are selected very carefully so as to obtain the best possible supervision for the practice teachers.

Those persons who are responsible for co-ordinating the supervisory program here at GSCW are as follows:

Dr. Walter B. Mathews, Miss Gladys Gilbreth, Miss Neva Jones, Miss Alberta Goff, and Miss Mamie Padgett.

The Georgia Schools which will participate in the program this year are: Sandersville High School; Russell High School, East Point; College Park High School; Chauncey High School; Dodge County, Eastman; Vashti School, Thomasville; Hapeville High School; M. P. Word Elementary School, Fairburn; Jere Wells Elementary School, East Point; and, Washington High School.

Student teachers for the quarter, with their designated areas of specialization and home town, are as follows: Neal Crotwell, Leesburg; Patricia Henry, Thomaston; and Margoless Jones, Augusta.

### ELEMENTARY EDUCATION

Helen Barnhill, Whigham; Manita Berrong, Milledgeville; Jeanette Croft, Americus; Ruth Ellen Dixon, Cordele; Janeth Parker, Jasper; Anne Sigman, Social Circle; Marion Strickland, Nahunta; Lee Strozier, Greenville; Peggy Von Pippin, Berryville, Va.; Kathryn Railey, Sumter; Lois Turner, Smrna; Jeanne

## Home Economics Club Views Flower Slides

The Home Economics Club had its regular meeting Thursday night, January 26 at 6:45. It was a joint meeting with Phi Upsilon Omicron, national honorary fraternity for home economics majors.

Mrs. M. D. Hodges, president of the Milledgeville Garden Club showed slides on flower arrangements to the two clubs. Refreshments were then served by Phi Upsilon Omicron.

## President Stanford Head Of Annual Polio Drive In Baldwin County Area

The month of January brings the annual Polio Drive throughout the United States. This year the drive in Baldwin County is headed by Dr. Henry King Stanford, president of Georgia State College for Women.

Students of GSCW will have opportunity to contribute to the Polio Drive by means of Coin collectors which will be placed in the dormitories. There are also coin collectors in the Student Union.

Twenty GSCW girls collected money for the March of Dimes at the movie Sunday, Monday, and Tuesday nights of this week.

At the faculty meeting recently, Dr. Stanford announced that members of the faculty may leave contributions in the Comptroller's Office.



MARJORIE NEWSOM TO PRESENT CONCERT

## Sigma Alpha Iota To Present Harpist February 2, Program Set In Mansion

Marjorie Newsom, Harpist, will be the second in the series of musicales sponsored by Sigma Alpha Iota. She will appear in the ballroom of the Mansion at 8:00 on Thursday, February 2. Admission to the performances in this series is by invitation only.

Mrs. Newsom was born on Cape Breton Island, Nova Scotia, and came to the United States when she was a young girl. She studied both piano and harp under eminent teachers in Boston. When she was seven, she first began practice on an Irish harp.

The concert harp on which Mrs. Newsom will perform is the most difficult of all instruments technically. The forty-

seven strings of the harp correspond to the white keys of the piano. This simplifies matters when there are no sharps or flats in the composition. But to play in a different key, the harpist must alter the tone by tightening or loosening the rings with pedals. One pedal—the C pedal—tightens or loosens all the C strings on the harp at one time. The D pedal controls all the D strings at once, and so on for the seven tones of the octave.

Two of the numbers that will be heard Thursday night, "North Sea" and "The Lost Bells of Botreaux", will especially exhibit the technical dexterity necessary for the modern concert harpist.

Several of the compositions in the program for the evening were written for Mrs. Newsom by her husband, Hugh Newsom. Mr. Newsom, who is a well-known contemporary American composer, has written more than forty compositions for the harp.

SAI members will act as hostesses during the Mason. The guests will then go up to the Blue Room for an informal discussion with Mrs. Newsom. She will be glad to explain the technical aspects of the harp and answer questions from the audience.

## "Costal Creepers" Presented GSCW By Mr. Holbrook

"Coastal Creepers", a lovely painting by Mr. Alfred H. Holbrook, is now hanging in the Art Gallery in the Fine Arts building.

Mr. Holbrook, who has donated several of his paintings to the University of Georgia, is interested in GSCW's art department. Thus, when Miss Mamie Padgett, one of our art professors, told him of her plan of starting a new art collection at GSCW he presented this painting to the college.

GSCW is very proud of the painting and is grateful for the generous gift.

## Varied Activities Of IRC Set For Winter Quarter

Elaine Langdon, President of the International Relations Club of GSCW, announces several activities of the Club, besides its regular bi-weekly meetings. At Emory University on February 1, a one-day session on world trade will stress Southern concerns in particular, so it is planned that GSCW be represented there.

The national meeting of IRC will occur during Easter week, as usual, because two-thirds of the College students in the U. S. A. have semester-type schedules and usually Easter vacation recess.

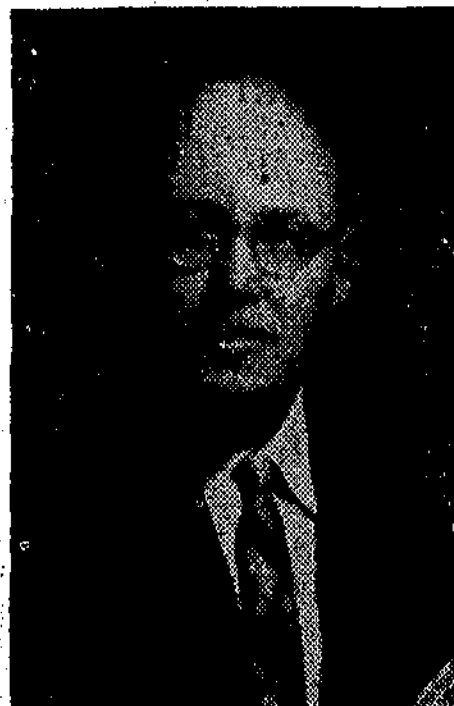
This year it is in Philadelphia, and GSCW plans to have two representatives if they can plan their work to take that week of absence.

Peggie O'Neal, treasurer, announced that enough money was collected, to clear up expenses for sending 1955 delegates to the U. N. institute in June; and it is hoped that enough will be left in the treasury for GSCW to send delegates to Philadelphia, as well as to New York in 1956.

Shirley Stafford, chairman of program, plans to emphasize the UNITED NATIONS in the bi-weekly meetings. January 19 the Club met and heard a panel discussion of the work of U. S. delegates in the U. N., prepared and presented by members.

Serving with Shirley Stafford in preparing the programs are Florence Crooke, who attended the U. N. Institute in New York last June, Carolyn Register, and Patricia Blalock Mathis.

January 10, the Club members joined the adult study-group sponsored by the Milledgeville Branch of the American Association of University Women, to hear Dr. Christopher Bull discuss his stay in Japan and Korea. As a member of the U. S. and U. N. medical service there, Dr. Bull had opportunity to make fine pictures of the area, which illustrated his narrative. His wife, the former Miss Katie Barrus, is the daughter of a member of the GSCW faculty.



DR. HENRY KING STANFORD



### Events Scheduled For Observance Of World University Service Week

W. U. S. — Remember? World University Service Week February 6-10. This is the time when college students all over the world will have the opportunity to give and receive financial assistance.

Frances Domingos, chairman of W. U. S., announces that the first event of the week is the Auction in the Student Union at 10:30 on Tuesday and Wednesday. Daisy Jo Hammett, with the help of the Freshman Commission, is in charge of the Auction.

The faculty talent show on Tuesday night, February 7, will be something you will all want to see.

The committee in charge of publicizing this Week is headed by Mary Alice Summerlin. Working with her are Emily Carter, chairman of the poster committee, Julia Ann Hall, Mary Lou Trussell, Louise Wamsley, Nell Washburn, Jean Leverette, and Carolyn Williams.

The success of W. U. S. Week will depend largely on your contribution to the dormitory solicitor who will visit you. Maurice Martin, Solicitor Chairman will have girls collecting student contributions in each dormitory.

Beeson — Robbie Jardine, Shirley Stafford.

Bell — Gloria Glenn, Avelyn Hutto, Doris Parks, Suetta Simms.

Ennis — Ruth Brown, Patsy Henry, Libby Powell.

Terrell — Nansy Maxwell, Jane Tarpley, Martha Thomas, Saralyn Trawick, Barbara Traylor, Sheila White.

Remember that you will be helping some other student when you give generously.

### Dining Hall Etiquette

Activities on the Jessie campus cast reflection not only on the individual student but on the whole of the student body. Therefore, the strangers to the GSCW campus judge the campus and college on the basis of the people met on campus.

One of the quickest methods of evaluating the college girls is to eat in the dining hall with a group of students.

However, recent occurrences in the dining hall at meal times cast unpleasant reflections on the students.

Too much talking, laughing, and forgetfulness of common courtesies have occurred. There are also some students who cannot cooperate by refraining from conversation during the blessings.

Within the next few months many high school students will visit the college campus to judge the school as their college preference. The GSCW student should start now to correct the false impressions which high school seniors might receive from the dining hall etiquette.

### The Reign Of Confusion

Have you ever sat on the stage during assembly with an important guest? It is quite an honor. But after the person has delivered the message and is returning to his seat, you wish that you were not sitting there where you could see the audience. Why?

Scarcely is the speaker a foot from the lecture when such a hustle develops. The official expression of thanks to the speaker and the words of dismissal from assembly remain unheard amid the collecting of books and putting on of coats. Then follows the big rush to the nearest door.

But, really, is this the way to show appreciation to those who spend their time and efforts for your benefits?

### Faculty Opinion

#### "Cultural Opportunities" Reviewed

TO THE EDITOR

I commend you for the editorial concerning the "Cultural Opportunities" offered at GSCW and the lack of interest on the part of students to attend.

I have always been very concerned about this particular phase of student development. Any statements you can make in your paper to encourage students to want to develop, the cultural aspects of their educational life will be helpful.

Signed:  
Max Noah  
Head of Music

### The Colonnade

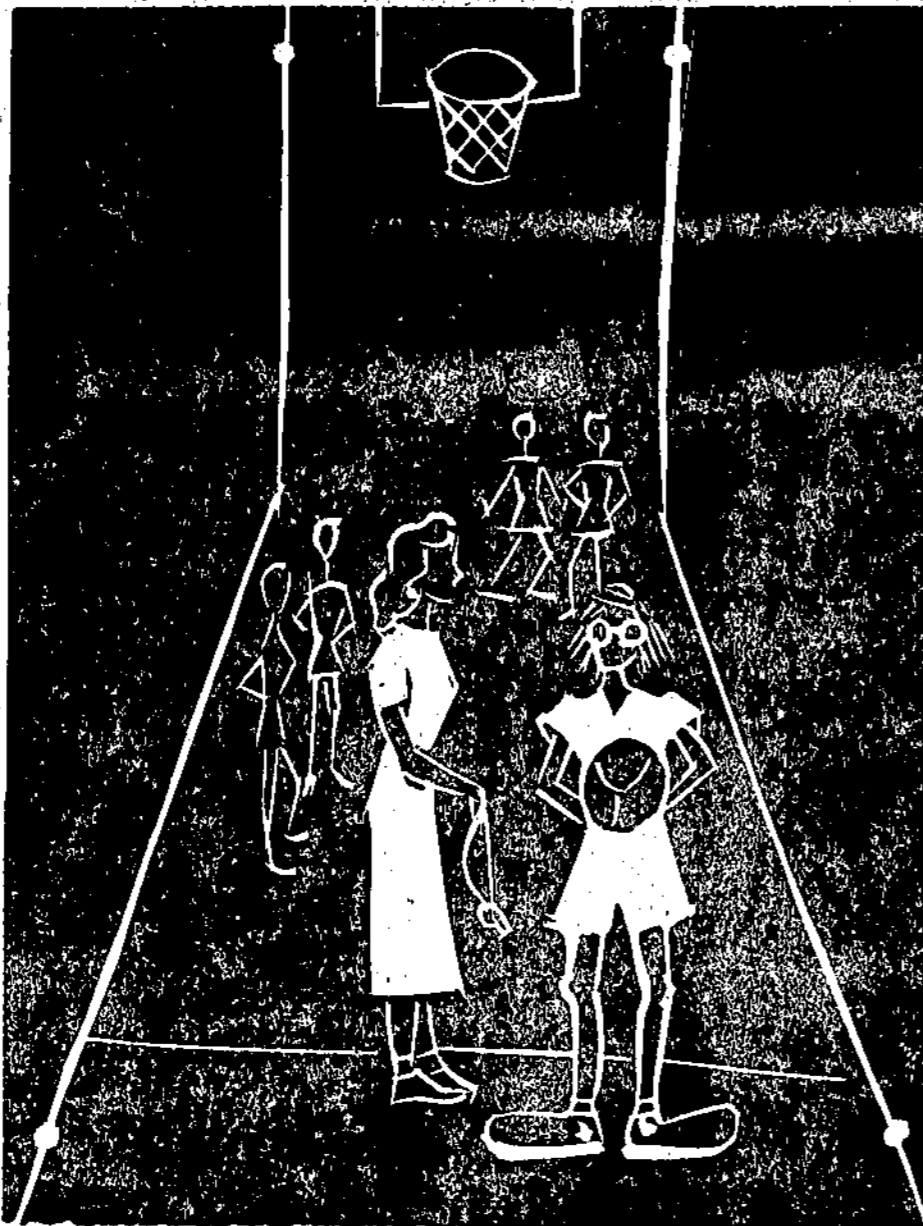
Published bi-weekly during the school year, except during holidays and examination periods by the students of the Georgia State College for Women, Milledgeville, Georgia. Subscription price, \$1.25 per year. Member of Associated Collegiate Press, National Advertising Service, and Georgia Collegiate Press Association.

Printed By The Union-Recorder, Milledgeville, Ga.

Member  
ASSOCIATED COLLEGIATE PRESS

### JESSIES

By Alice Gilmore



WHICH GOAL?

### Methodists Celebrate Homecoming

The Wesley Foundation will have its Annual Homecoming celebration on February 24, 25, and 26.

Rev Mack Anthony, from the First Methodist Church in Valdosta, will be the guest speaker.

The week-end will begin with coffee Friday night at the Wesley Foundation office. The group will then go to the College Theater Play.

On Saturday, there will be a picnic in the middle of the day. Saturday night there will be a banquet at the Wesley Foundation office, after which there will be a square dance in the Alumni Guest House Recreation Hall.

On Sunday, January 29 will be Enlistment Day with an attendance goal in Sunday School.

### Fashion's Fads

#### Versatility Spotlighted For Wearing Apparel On and Off College Campus

By the time the end of the week rolls around, our thoughts become centered around Week-end attire. For those much looked forward to dates, we'd like for our clothes to look a little special. Of course, just for movie or campus dates, skirts and sweaters are the old stand-by. But, if he suggests an evening "out" we wail into the understanding ears of our roommates that we have nothing to wear.

This doesn't necessarily have to be a problem for you. Separates make wonderful "dating duds" and they can be dressed up or down according to the occasion. Take the velvet jumper for example. If it is worn without a blouse and dressed up with this wonderful winter jewelry, you have an exciting costume that cannot help but draw admiring glances. Heels or flats in the same color as the jumper not only add to the loveliness of the jumper that has become a dress, but they give you the priceless feeling that you are dressed correctly for the occasion. Wear a blouse with your jumper, add a hat that is becoming to you, and you have the perfect ensemble for church. If you do different things to your jumper, then it will do wonderful things for you.

It won't do to have just one Sunday outfit. College girls may be somewhat limited on their spending money, but an extra penny or dollar, as the case may be, can be spared here and there. Now you can acquire something different for Sunday wear. A cute little dress of cotton and silk can double for church and Sunday afternoon dates. For church, a velvet flower in one of the many beautiful winter colors, can be worn at the throat. Or add a collar of satin with one of the fabulous jeweled designs and you have an entirely different dress. It is just amazing what one can do to an outfit if the accessories are available.

### Mr. Melton Cites State's Progress, Financial Growth

"Georgia is the greatest state in the Union," said Quimby Melton, Jr., editor of the "Griffin Daily News," and a member of Regents of the University System.

Melton, young president of the Georgia Press Association, went on to review for the GSCW assembly, Georgia's contributions to the founding of the United States and to recount her phenomenal progress since the "misunderstanding with Mr. Sherman and his friends in 1860".

He said, "if a crow flew over Georgia then he had to pack a lunch or starve to death. Georgia was a land of adject poverty after the Civil War".

"Compare this, if you will" he continued, "to the progress and prosperity we find in our state today."

He then cited the recent prodigious increase in Georgia's taxable wealth, per capita income, industries, and per cent of tax dollar spent for education and roads. Finally he urged GSCW students (whom he referred as Georgia's Sweetest Collection of Women) to stay in Georgia and "share in its opportunities and responsibilities."

### Students Participate In Discussion Of Code

Assembly, Monday, January 23, saw the spotlight put on the short-comings of the Honor Code rather than the successful side of the picture. In planning the program, Honor Council had decided that a program displaying the weak points would be more interesting and more beneficial to the students. Also it was decided that an audience participation program would be more helpful, in that it would give everybody a change to express her ideas. Previously the programs have been composed of speakers, one from each class, who give their views on the Honor Code.

The program was begun by Gail Thompson, Chairman of Honor Council, who served as moderator of the panel which was composed of Honor Council members. Audience participation was good, and several good points were discussed. These pertained to cheating, and the relationship of house rules to the Honor Code.

It Costs Less At  
McMILLAN'S  
SHOE SERVICE

MILLER'S  
5c To \$1.00 Stores  
Milledgeville  
Sparta - Wadley

BUTTS DRUG CO.  
THE PRESCRIPTION SHOP  
Milledgeville, Ga.



MICKY YOUNG

### Inside The Jessies Sport World

#### BASKETBALL

The first game of the season's basketball intramurals was played January 23. Ennis faced Beeson in a game that was one sided. The players of both teams really put their best foot forward but the Beesonites seemed to have the advantage. The final score read 60 for Beeson and 35 for Ennis.

January the 25 saw another fine game which was battled out between Bell and Terrell B and C. The biggest difference in score during the game was no more than five points. The Freshmen started out winning and they almost did. Carolyn Williams, and Nedra Garrett led the field for Terrell, and Bell had a time keeping the score running in their favor. Frances Domingos and Sue Colquitt were on and this combination just couldn't be beaten. In the final minutes of the tilt the score was 42 to 40 and as the horn blew Bell had the lead which won the game.

Monday, January 30, is the time set for the third game of the dorm intramurals. Terrell and Proper face Beeson. Come out and watch it: you will enjoy the game.

#### TUMBLING

O'conee was the sight of a tumbling demonstration given for the P.T.A. The program got under way about 7:30 P.M. and the club did rolls, flips, balances and dives for the onlookers. At the end of their fine performance, the tumblers were served refreshments.

#### PLAY NITE

A play nite was held in the Gym January 21. The skating party which had been planned

JEWEL'S BEAUTY  
SHOP  
WAYNE ST.

MUSIC  
from  
HALL MUSIC CO.  
SOUTH WAYNE ST.

YOUR DRY CLEANER'S  
Your Clothes' Best Friend

## DEMPSTER'S

LAUNDRY — DRY CLEANING  
ALTERATIONS  
"Personalized Service"

TRY OUR  
BETTER  
DRY CLEANING

## Leap Year Brings Romances

### Buzzing Around

Hi there, remember me? It seems I buzzed too far off and got out of the last issue. Sure have a lot of news to catch up on so hold your hat and away we go.

Our first stop is to offer our best wishes to all those "Jessies" who waltzed down that center aisle during Christmas. They are Miriam Smith McKinley, Joanne Keith Hiers, Pasty Blacklock Mathis, Nancy Pace White and Gwen Mathis Hennant.

Stop number two told me the names of all those to whom Santa brought diamonds plus very nice fellows: Sara Davis, Jo Carol Knight, Jerrie Smith, June Bray, Suzanne Jackson, Jenean Crosby, Marjorie Hart, Martha Howard, and Jenetta Faulkner.

While I was scampering all over campus, mainly to get out of the cold, I was able to pick up bits of interesting talk. It seems Emily Carter received a special delivery letter from her "best beloved". Why? Ask her. While we're on the Carter family, Mary Carter and Betty

Jane Williams went up to Yale University in Athens. Seems like a lot of Jessies like to venture there.

I've heard that two Juniors like it better down Tifton way, right Jean Cheeley and Mary Jane Beland? I thought so. It has also been said that Dala likes it better in Atlanta. One Senior namely, Angie Amis, takes to the local men in a big way. She dates the coach at GMC and a young prominent

attorney.

Mickey Young is sporting a beautiful frat pin on her blouses.

Last Friday night, was a big event in the life of Claramel Bell, as she received her diamond.

Well, here's our last stop to hear that a former "Jessie", Reva Chambers Bartlett had a little boy January 22. He's a Junior!

My last stop's over so I'll head for home and remember, I'll be buzzing around!

THE GLOBE SHOE HOSPITAL  
"Best Shoe Service On Earth"  
NEXT TO CAMPUS THEATRE — MILLEDGEVILLE

CAMPUS THEATRE  
SUNDAY & MONDAY, JANUARY 29 & 30

## The SECOND GREATEST SEX

starring  
JEANNE CRAIN - MAMIE VAN DOREN  
GEORGE NADER - KITTY KALLEN  
A UNIVERSAL-INTERNATIONAL PICTURE

LADY MANHATTAN SHIRTS ON SALE  
ATHOLLOWAY'S  
P.S. Also new Spring Skirts and Blouses  
Have Arrived.

# SALE

TUSSY  
CLEANSING  
CREAMS  
REG. 52 SIZE  
\$1 PLUS TAX  
LIMITED TIME

Tussy Emulsified Cleansing Cream for dry skin... gives gentle, thorough cleansing!  
Tussy Pink Cleansing Cream for normal and oily skin... dissolves grime, excess oil.

# SALE

TUSSY  
AFTER-CLEANSING  
LOTIC IS  
REG. \$1.75 SIZE  
\$1 PLUS TAX  
LIMITED TIME

Tussy Dry Skin Freshener... refreshes and braces.  
Tussy Skin Lotion... stimulates normal and oily skin.

CULVER & KIDD DRUG CO.  
PHONE 224 — WE DELIVER



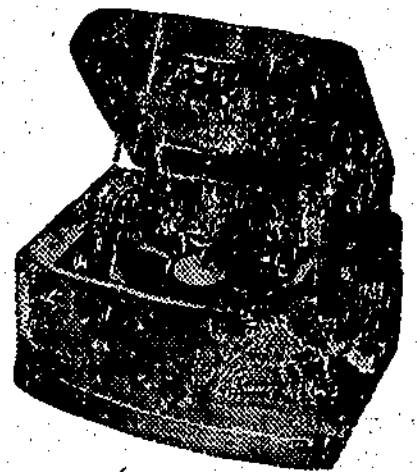
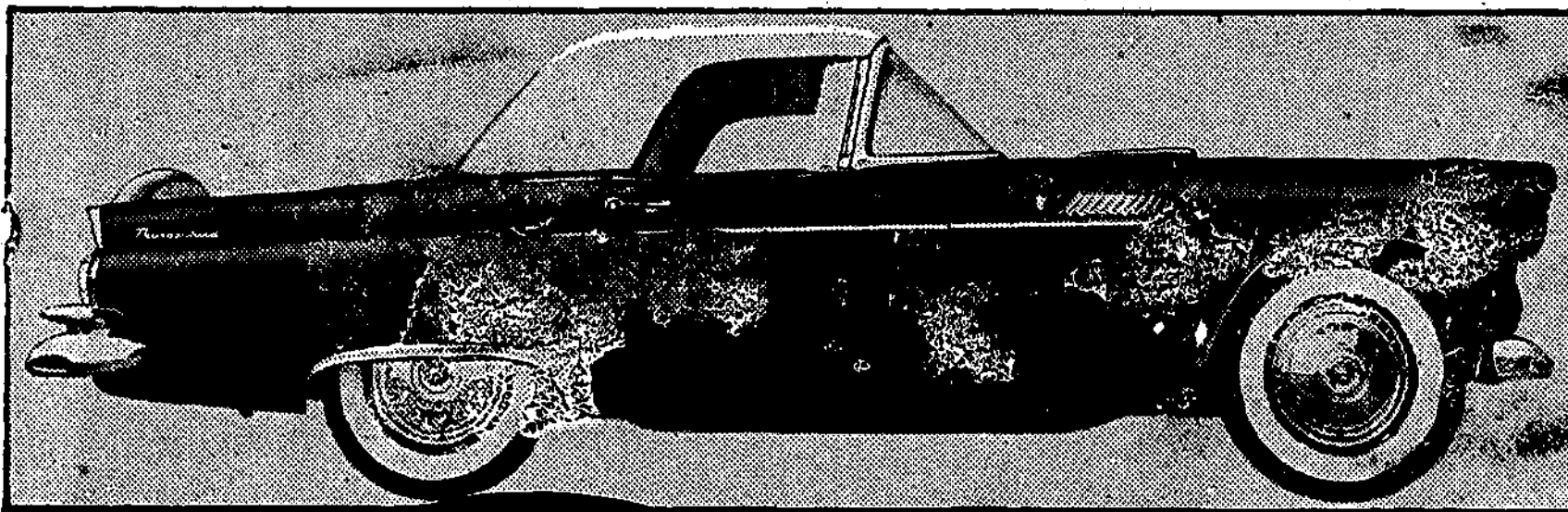
**WIN**  
\$50,000 IN PRIZES

**HURRY! HURRY! HURRY!**  
CONTEST CLOSES JAN. 31ST

# 10 Ford Thunderbirds

PLUS 40 COLUMBIA Hi-Fi Phonographs

FOR THE 50 COLLEGE STUDENTS WHO  
WRITE THE BEST NAMES FOR  
VICEROY'S PURE, WHITE, NATURAL FILTER!



10 Winners! 10 Thunderbirds! Win a fully equipped new '56 Thunderbird! In your choice of colors! Automatic transmission, two tops, power steering, radio, white side walls. Act now and win!

40 Winners! 40 Columbia Hi-Fi Sets! Own America's most exciting Hi-Fi! Phonograph—the Columbia "207" K—beautiful Mahogany!

Plus 10 RCA Victor Color TV Sets to the college organizations designated by the 10 Thunderbird winners!



JUST NAME THIS  
AMAZING FILTER!  
THAT'S ALL YOU  
DO TO WIN!

20,000 FILTER TRAPS  
TWICE AS MANY AS THE  
NEXT TWO LARGEST-SELLING  
FILTER BRANDS—FOR THAT  
REAL TOBACCO TASTE!

**TIPS TO HELP YOU WIN!**

Write your name and address on a separate sheet of paper. Do not write on the cigarette pack. Write the name of your college and your mailing address on the back of the pack. Submit as many entries as you wish—but with each entry include the picture of the Viceroy Filter. Tip torn or cut from packages of two (2) Viceroy packages.

**NO OTHER FILTER LIKE VICEROY!**  
No cotton! No paper! No asbestos!  
No chemical! No foreign substances  
of any kind! Made from Pure Cellulose—  
Soft... Snow-white... Natural!

So easy to name this amazing Viceroy Filter...  
You know what it's made of... why it's superior...  
Only Viceroy give you that real tobacco taste you  
miss in every other filter brand!

Remember, the Viceroy  
Filter is made from 100%  
pure cellulose—a soft,  
natural material found in  
every good food you eat!  
There are no impurities in  
the Viceroy Filter. So nat-  
urally it lets the real to-  
bacco taste come through!  
Name the Viceroy Filter!  
Enter the contest now!



**JUST BRAG THESE EASY RULES!**

- 1 On any plain paper, write the name of your college for the pure, white Viceroy Filter. It's so easy! You can think of dozens of names: "Flavor Flow," "Natural," "Flavor Flow," "The-Trap." You can use one, two or three words. Any name may win!
- 2 Mail your entry to Viceroy Thunderbird Contest, P. O. Box 64, Mount Vernon 10, New York. Write plainly or print your name, the name of your college and your mailing address on the back of the pack. Submit as many entries as you wish—but with each entry include the picture of the Viceroy Filter. Tip torn or cut from packages of two (2) Viceroy packages.
- 3 Contest open to all students attending colleges and universities in the U.S.A.
- 4 Contest closes January 31, 1956. Entries will be judged by Reuben H. Donnelly Corporation on the basis of originality and interest.
- 5 Prizes listed elsewhere in this ad. Winners of the 10 Thunderbirds will also be permitted to designate the school organizations to which Brown & Williamson Tobacco Corporation will award RCA Victor Color TV Sets! Write the name of the organization you want to receive this award on your entry.