

---

Colonnade

Special Collections

---

11-3-1972

## Colonnade November 3, 1972

Colonnade

Follow this and additional works at: <https://kb.gcsu.edu/colonnade>



Part of the [Higher Education Commons](#), and the [Mass Communication Commons](#)

---

### Recommended Citation

Colonnade, "Colonnade November 3, 1972" (1972). *Colonnade*. 674.  
<https://kb.gcsu.edu/colonnade/674>

This Book is brought to you for free and open access by the Special Collections at Knowledge Box. It has been accepted for inclusion in Colonnade by an authorized administrator of Knowledge Box.

# THE COLONNAD

## Nine Students Named To "Tartuffe" Production

Nine students from as many Georgia communities have been named to the production staff for "Tartuffe", the fall quarter production of the Georgia College Theatre group.

Charlene Gowen of Warner Robins was named student director, and Fred Green of Cedartown, stage manager.

Jane Edmunds of Thomson and Gail Hudson of Columbus will serve as co-chairmen of the costume committee.

Robert Riddle of Jackson will

be in charge of lights, Linda Griffin of Gordon in charge of makeup, and Janice Tuck of Covington and Diane Driggers of Dalton in charge of props.

The art work for the production will be done by Cheryl Frederickson of Stone Mountain.

The production is under the direction of Dalton Eddleman, assistant professor of speech and drama at the college. "Tartuffe" will be presented in Russell Auditorium at the college on Nov. 2-4 at 8 p.m.

## Action Line!

Starring Mike Williams

Dear Action Line,

What is the position, as of now, concerning the consumption of alcohol in the dorms?

D.L.

the definite place as of yet so maybe if we are lucky they will put it somewhere else.

Mike

Dear D.L.,

The information that I was able to come up with was strictly unofficial but it seems the Senate passed the resolution in their last meeting and now it has to go before the Faculty Relations Committee for passing. One way or the other, the decision rests ultimately with them so in answer to your question it is still pretty much up in the air.

Mike

Dear Action Line,

Why is there a ridiculous Mickey Mouse sign placed in front of the campus? The idea that a college needs a sign to show the ABC's and a sign that lights up to show the stupidity of its being there is childish and utterly ridiculous; therefore, why was it placed here?

D.D.

Dear Action Line,

Why can't cigarette, ice and milk machines be placed in the dorms? It's a long, cold walk to the student union.

N.K.

Dear D.D.,

I talked with Dean Littleton about it and it seems that the sign was donated to show the college events that are forthcoming and to identify the college campus. A committee decided to place the sign in that particular place because it is easily seen from the street. The idea of a sign is not so bad as the assinine place they chose to put it. I do hope the committee will reconsider and put it somewhere, anywhere but where they placed it. This is not

Dear N.K.,

Have patience it is on the way, at least the cigarette and milk machines. Dean Littleton said that the college is in the process of checking into this so as soon as they come up with the necessary funds and whatever else is holding it up we are going to get them. The ice machine might be just a little big harder to get but we are working on it and here's hoping we get it soon.

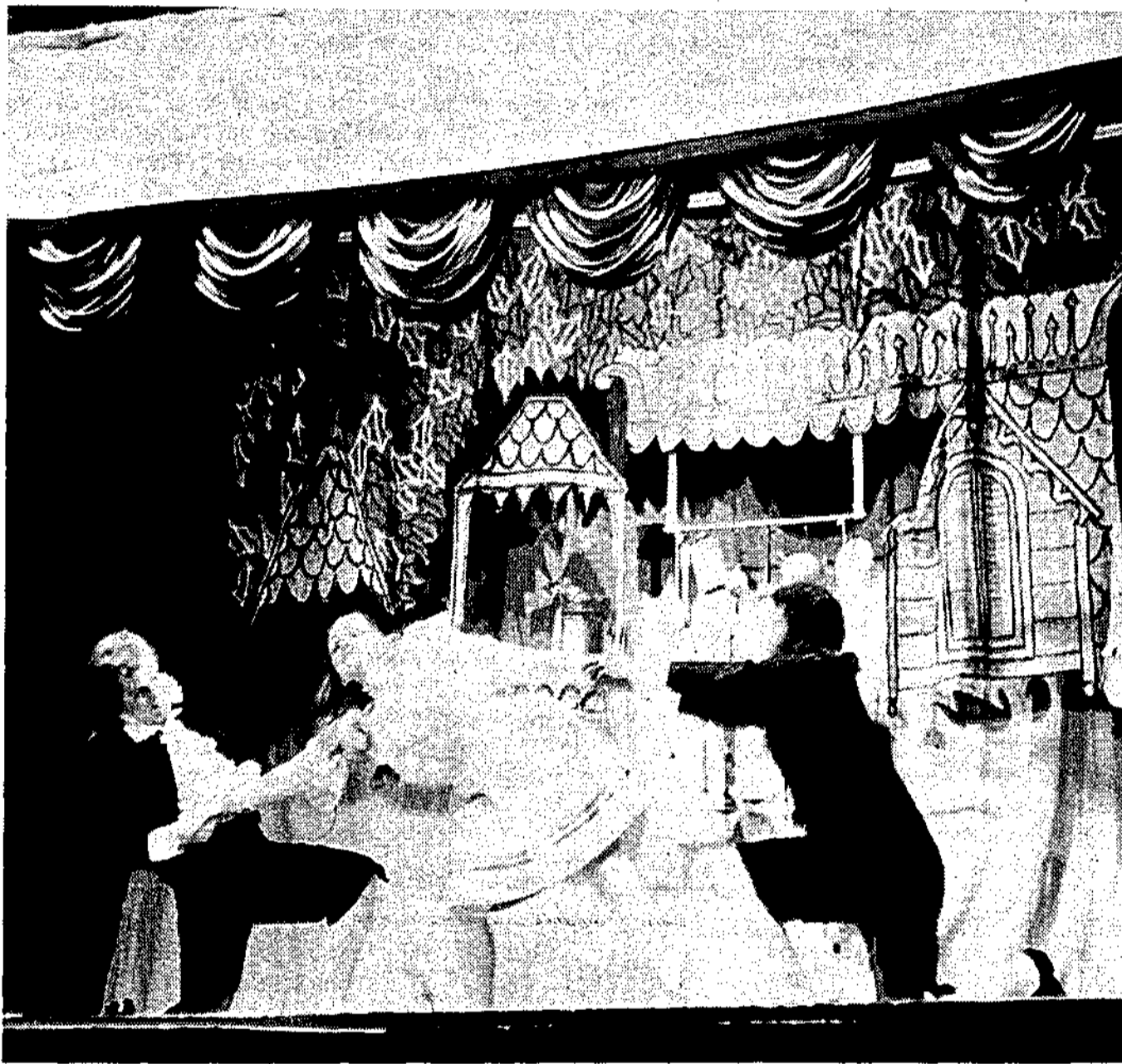
Mike

Send questions to Mike Williams Box 2110.

## GC Volleyball Team Wins

The Georgia College Women's Volleyball team won a volleyball tournament at Columbus College on Monday, Oct. 23, defeating Tift College 15-0 and 15-7 and

Columbus by 15-6 and 15-0 scores. Coach Jean Osborne is pleased with the team's serving and setting but believes improvement is needed in the spiking.



"Wild Action awaits the audience who views Tartuffe!"

## Financial Aid Gets Alumni Money

A grant of approximately \$8,000 to the financial aid program at Georgia College has been made by the college alumni association to fund student loans at GC.

The grant will be used to provide scholarships for academic excellence to be awarded this year to seven seniors and two sophomores. The scholarships cover activity and health fees at the college as well

as tuition.

Scholarship winners are Mrs. Elizabeth Anne Jones Hudson of Eatonton, Mary Kathryn Keenan of Claxton, Myra Kay Macket of Rentz, Teresa Carol Payne of Rome, Susan Lee Smallwood of Attapulgus, Mrs. Karen Smith Sutton of Macon, Norma Jean Thompson of Dalton, Emmie Victoria Berryman of Toyston, and Julia Virginia Lee of

Waycross.

The alumni association also made available \$1,500 to a faculty travel fund and \$1,000 to the department of health, physical education, and recreation to help expand the athletic program at the college.

The GC alumni association became incorporated this past year with a new charter and revised by-laws.

## GC Joins Association Of College Unions

Georgia College has become a member of one of the oldest intercollegiate organizations in higher education---the Association of College Unions-International.

Founded in 1914, the

association is committed to student-staff partnership through student participation on an individual, regional, and international basis.

Approximately 900 colleges and

universities in the world belong to the association.

Harriette L. Donahoo, director of student activities at GC, is the college representative to the association.

### CONCERTS COMING

ATLANTA

Nov. 14 - THE BYRDS

Nov. 15 - ELTON JOHN

COMING IN DEC. (Maybe) LED ZEPPLIN

ATHENS

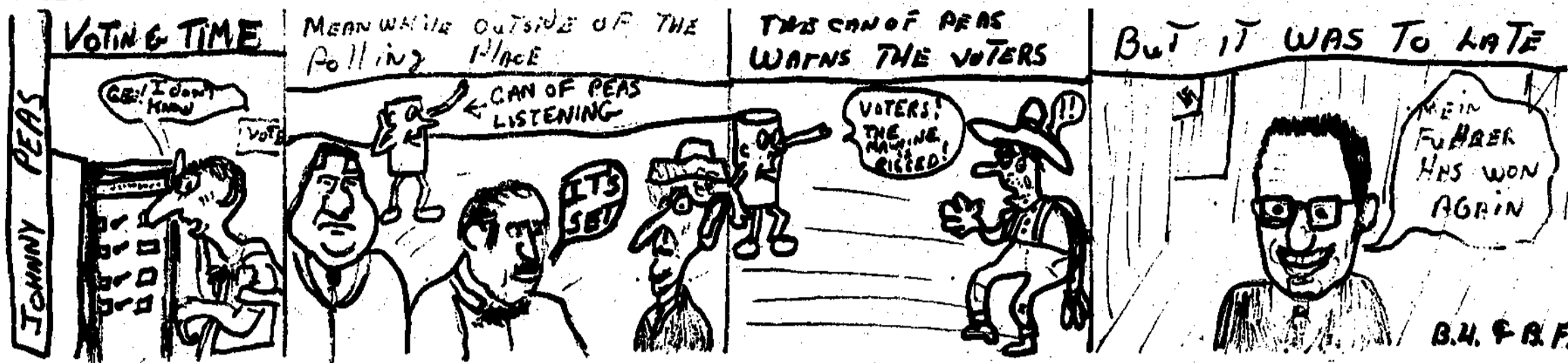
Nov. 14 - YES

## President Bunting Ill

Many of our students are not aware of the fact that President Bunting has been hospitalized due to a heart attack. In speaking with a faculty member, I learned that the President's doctors are very pleased with his progress at this time.

The Colonnade wishes President Bunting a very speedy recovery.





## Air Pollution Low In Atlanta Area

That old saw about throwing up the window for a breath of fresh air is as valid as last year's World Series ticket, according to research into the air quality of American homes sponsored by the American Association for the Advancement of Science.

And so is the general observation that the family den or the living room are likely to collect heavier sedimentation than other rooms in the house.

A report on the research conducted by the association indicates that rooms with the windows kept closed are not as heavy in sedimentation as rooms with windows opened wide, according to three scientists at Georgia College John Aliff, John Hargaden, and William Lamb who participated in the air quality testing program.

Some 103 college teachers from 53 institutions participated in the testing program in four areas—Atlanta, Chicago, and Washington and Austin-San Antonio.

The test, conducted in urban, suburban, and rural homes, indicated that industrial Chicago had the dirtiest urban area, Washington and Austin-San Antonio had the suburbs with the highest sedimentation, and rural homes in the Atlanta area contained more sedimentation than rural homes in either Chicago or Washington.

The bathroom is by far the dirtiest room in the home, say Aliff and Hargaden because this is where milady sprays her hair, and where the entire family towels down after a bath or shower leaving towel fibers and skin flecks floating in the air until

they settle on a surface.

Tiny flakes from hair spray and certain antiperspirants, cellulose in minute cotton fibers, and dusting and talcum powders are potentially dangerous ingredients in the bathroom and often lead to emphysema.

The kitchen is a close second in the dirty derby.

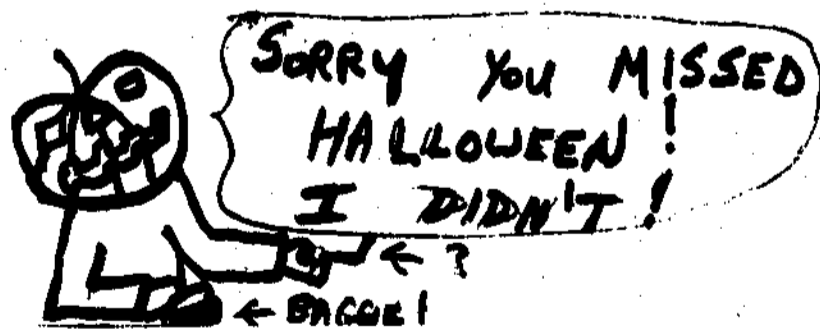
Aliff, Hargaden, and Lamb sent in approximately 40 samplings of the 138 used to record sedimentation in the Atlanta region study. There were 22 homes sampled in the Atlanta region which ran from Greenville, S.C. through North Georgia and on into portions of Alabama and Tennessee.

Scientists measured "settleable particles" in the homes tested by placing 1,072 small aluminum foil discs in strategic places in more than 100 homes in the four areas selected by the AAAS and left them in position for 30 days.

The sampling devices were attached to holders and exposed to particulate fallout from the air during the test period.

After they were retrieved, the foils were weighed, analyzed, and examined under various degrees of magnification and photographed.

Most particles were found to settle on a surface as dust, but there were others light enough to be breathed before they finally settled. Those light enough to stay in the air for awhile included clothing fibers, starch granules, soot, pollens of various kinds, soil, and the numerous household and beauty sprays.



## Duplicate Bridge

By Diane Driggers

Duplicate Bridge, unlike regular bridge, minimizes luck in bridge. Each player and his partner play against the other teams using the same cards. After each game the players change tables and play another game. The points are totaled for

each game and the winners are the team which has accumulated the most points. A player's skill is judged by the number of master points he has acquired which are awarded to the winner according to his ability to play several hands.

## GC Duplicate Bridge Club

-Mondays 7-11p.m.  
-Maxwell Union, Study Room  
136  
-Informal instruction before the game at 7:30 by experienced players  
-Sanctioned by the American

Contract Bridge League  
-Everyone welcome  
-No duplicate experience necessary  
-Players should bring a partner  
-50 cents per person

## Open Letter From The United Church Of Christ

Dear Fellow Citizen:

This letter is sent to you because I find many people who are deeply disturbed about the future of our country, others who are apathetic and many who feel that the situation is hopeless, others have given up.

The longer I live the more I am convinced that there is but one destiny of men and nations, the destiny of character, and the test of character is its use of power.

It was in 1620 some refugees boarded a ship and crossed the ocean to the New World to be free to worship God. They won their freedom, but at a great price. They then formed a government to protect them to live in freedom. Their gift to the world was good will, peace and freedom. "Liberty Enlightening the World," a nation, under God. From the beginning two characters developed in our country, one under the discipline of freedom, the other under slavery. The two characters with irrepressible impulses met in dreadful conflict. Slavery was defeated and freedom was preserved in one nation, under God.

As the Civil War was nearing a close Lincoln said he sensed the beginning of a new corporate development, which if not controlled would destroy the nation.

A little more than half a century ago (55 years) two branches of government, each one having the duty to prevent the other from any attempt to deprive the people of their freedom, betrayed their trust by declaring war. By so doing they opened the door to all of the evils that our fathers, as refugees, fled to escape.

It was the intent of those who

established our government that armaments were for the common defense, under civil control, and not to engage in foreign wars. The moment our nation entered war in 1917 a new character was born in our country. War has its own prides and systems which are dearer to it than truth itself.

The nation with its foundation resting on the rock of truth and freedom could readily state broad principles of the brotherhood of man, the universal fatherhood and justice of God, however imperfectly they might realize them in practice.

The new character denied these principles and has proceeded to "dig consistent acknowledged sinfulness."

Briefly stated, the nature of one character in our nation, under God, is full of the influences of Freedom, the other nature is full of the influences of Conflict.

The new character in American life has had a tremendous growth during its fifty-five years of life. It has found ready allies to share and benefit in its endeavors. Men in public office as well as men in business and others eager for riches and power, became enthusiastic associates. Corporate development of which Lincoln warned, has not been controlled and has become a part of the new character.

On taking office, President Nixon had two choices, one to accept and support "The New Approach to World Peace" which would change the direction in which the nation was moving and open the way for achieving a lasting peace, the other to continue course of his predecessors. He chose the latter.

Congress has become powerless to serve the people of the nation because the "military-industrial and the military-political interests penetrate all policy making and add their weight to every political decision."

By following practices already in operation and embracing theories and practices of the Democratic party, the administration had reached the summit of power. In doing so, it has developed within the nation the three things that all past civilizations had in common, when they reached the summit of power, that led to their decline and fall, "Moral decay, political corruption and financial failure."

This is the pinnacle of power on which our nation stands now.

On November 7, 1972 the citizens of our country are confronted with two choices:

1. Shall we vote to change the direction in which our nation is now moving, to reestablish our government on the "rock foundation of truth, good will, peace and freedom,"

or

2. Shall we vote to support the present administration that brought us to the summit of corrupt power which can result only in the loss of everything in our land that we hold dear?  
Yours for truth and freedom,  
Thomas M. Lineweaver

P.S. This letter is written as a result of remarks and criticism made today at the meeting of the Rotary Club in Chicago Heights.

Any one desiring a copy of "The New Approach to World Peace" may send a stamped self-addressed envelope to the writer.

## Flannery O'Connor Bulletin To Be Published

Articles by seven authors will be featured in the first Flannery O'Connor Bulletin to be published in November by Georgia College.

Articles in the first issue of the magazine will range from personal reminiscences of Miss O'Connor to analytical studies of her fiction.

Dr. Rosa Lee Walston, professor emeritus of English at

Georgia College, and Gerald Becham, curator of the Flannery O'Connor Collection at the college; will be two of the authors featured in the November issue.

Others will be Dr. Stuart Burns of Drake University in Iowa, Dr. John F. Desmond of Ohio University, Dr. Ted Spivey of state University, Dr. Frederick Asals of the University of Toronto, and Father Charles J.

Hegarty, S.J., of the University of Chicago.

Subscription requests to the magazine have already been received from residents and institutions in 30 states. Requests for subscriptions are still being accepted and may be sent to Box 608, Georgia College, Milledgeville, Ga. 31061.

The subscription to the limited first edition costs \$2.

## Interfraternity Council To Give Party

The newly formed Interfraternity Council presents its first social and service projects on Monday Nov. 6 by way of a "CHARTY BALL." This party will be held at the OTHER HALF beginning at 8:00 p.m., lasting till midnight. The band will be PHIONEX RISING.

Admission cost are: Brothers of Pi Beta Alpha and Phi Delta Mu \$1.00 their dates 50 cents.

Guest \$2.00 their dates \$1.00. A small Donation will be ask for refreshments.

There are no classes on Nov. 7 and female curfew has been extended to 12:30. All profits go to charity.

EVERYONE IS INVITED!