
Colonnade

Special Collections

11-9-1973

Colonnade November 9, 1973

Colonnade

Follow this and additional works at: <https://kb.gcsu.edu/colonnade>



Part of the [Higher Education Commons](#), and the [Mass Communication Commons](#)

Recommended Citation

Colonnade, "Colonnade November 9, 1973" (1973). *Colonnade*. 694.
<https://kb.gcsu.edu/colonnade/694>

This Book is brought to you for free and open access by the Special Collections at Knowledge Box. It has been accepted for inclusion in Colonnade by an authorized administrator of Knowledge Box.

Chorus Becomes Goodwill Ambassadors

Choral activities at Georgia College are not all song and dance. They're a lot of work too.

And now that three GC choral groups plan to tour Europe in March, the singers will be working as hard as they sing in practice sessions in preparation for the tour and to help pay their expenses.

Expected stops in the eight-day tour, conceived and organized by a small planning committee, are Amsterdam, London, Cambridge, and Paris where the singers will present a concert in Notre Dame.

During the tour, from March 12 to March 20, the Women's Chorale and Mixed Chorus will present sacred and serious concerts while the Aeolian Singers will do their thing — perform lighter music and madrigals.

More than 80 GC students are expected to be in the touring party, contributing \$200 of their own money in the process. The remaining funds necessary to take the trip abroad will come from a variety of work projects or sales enterprises.

These projects will include work days where students will rake lawns, wash windows, cut grass, and clean basements. The singers have sold donuts, sponsored a rummage sale, and plan to operate concession stands at various sports events to raise money.

Recently, Gov. Jimmy Carter proclaimed the GC choral groups as ambassadors of good will for the State of Georgia to the cities on the tour and presented a signed proclamation to Martin Bittick, director of choral activities at the college.

Last spring, the choral groups spent their spring break on a tour of New York, Pennsylvania, Virginia, Maryland, and Washington.

The GC singers have also performed widely in Georgia and neighboring states — in churches, clubs, and schools.

Several TV appearances have been scheduled to publicize the coming tour, and the singers will appear at the opening session of the Georgia Legislature in January.



Gov. Jimmy Carter presents to Martin Bittick, director of choral activities at Georgia College, a proclamation declaring his singing groups ambassadors from the State of Georgia to the cities of Amsterdam, Paris, and London. It is hoped the tour will encourage an exchange of tourism to the U.S. and particularly to Georgia. The Mixed Chorus, Women's Chorale, and Aeolian Singers will take their talent to Europe in March. At left is Tom Dungan, a Milledgeville senior and a member of the Aeolian Singers.



It's
Your
Right
To
Know

THE COLONNADE

It's
Our
Duty
To
Inform



November 9, 1973

Georgia College, Milledgeville, Georgia

Volume 50, Issue 7

Adams Chairs Fund

Dr. Elizabeth Knowles Adams of Decatur, the Georgia College Alumni Achievement Award winner in 1971, will serve as general chairman of the 1973-74 Annual Fund Campaign at the college.

Dr. Adams is a member of the medical staff at Emory University where she received

her M.D. degree in 1951. She received her B.S. degree at the Georgia State College for Women, the forerunner of GC, in 1945.

In accepting the position, Dr. Adams stressed that the objectives of this year's drive will be to increase the percentage of participation among alumni and friends. While Georgia College enjoyed the best year in its history with a record total of nearly \$35,000 in unrestricted contributions, there is still much work to be done and much room to grow, she noted.

"At a time when federal funding has slackened and the inflationary spiral continues its sharp upward trend, only alumni and friends of the college can compensate the budget and still provide that margin of excellence that makes GC a very special place to learn," said Dr. Adams.

Unrestricted money to be used where the need is greatest is this year's campaign object, Dr. Adams stated. Scholarships and loans are high on the priority list, since GC Financial Aid Director Edward Spencer has informed applicants that a decline in the National Defense Student Loan program will mean smaller allotments going to fewer students, according to Dr. Adams.

The new chairman will direct the annual fund campaign in

Sophomores

The Sophomore Class is ready to order class shirts. They will be red T-shirts with our emblem—the elephant—and "Class of '76" in black print. The shirts will be ordered through the bookstore and will cost about \$3.50. To order send your name and size desired (L, M, or S) to P. O. Box 2427, Georgia College. Your order must be in by Friday, November 16.

BA And EC

The Department of Business Administration and Economics announced that Dr. B. J. Dooley, Dr. Robert Anderson, Mr. Edward Marcin, and Mr. J. Gordon Long will attend the Southern Management Meeting. These faculty members will go to Houston, Texas on November 21, 1973 to attend this three day conference.

People are needed to work on Homecoming 1974. One meeting has been held and nobody showed up. If you are interested in working on Homecoming please drop a note to:

Keith Jones
 Campus Box 1874
 Include your name, address, and schedule. If no one wants to work Homecoming may be just another basketball game.

Run Off Returns

PRESIDENT
 () 1. Tommy Boswell
 () 2. Mel Harris
 () 3. Karen Kimball (W)

VICE-PRESIDENT
 () 1. David Childs (W)
 () 2. Robert Davis

SEC-TREASURER
 () 1. Fred Mobley
 () 2. Martha Robbins (W)

Bruce James— Honorary Representative

coordination with the college administration and directors from the ten congressional districts in Georgia and areas throughout the nation.

A resident of Decatur, where her husband is also in medical practice, she serves as staff physician at the Emory Infirmary and teaches in the Allied Medical program.

As a student at GC when the college was known as GSCW, Dr. Adams was a campus leader who served as president of the Recreation Association and as an officer for her class, the YWCA, and the Student Council. Still active in campus affairs, Dr. Adams has won acclaim in recent years for her outstanding efforts to inform Emory students and youth throughout the Southeast on such topics as drug abuse and mental health. She is in great demand as a speaker and panel spokesman before civic and professional groups and before TV and radio audiences.

Wolfersteigs On Brazilian Exchange

Dr. and Mrs. Robert Wolfersteig and Mr. and Mrs. Ron Bracewell of Milledgeville have taken part in the largest citizen exchange program ever undertaken by the Partners of the Americas.

An independent organization of private citizens, Partners of the Americas is committed to fostering a closer relationship and understanding between the countries of North and South America.

As an organization, it conducts the largest "people to people" program in the Western Hemisphere.

The Wolfersteigs, accompanied by their daughter, Patti, traveled to Brazil, while the Bracewells served as hosts to a Brazilian couple in Milledgeville.

Dr. Wolfersteig is chairman of the music department at Georgia College; Bracewell teaches Latin at Baldwin High School.

Georgia and its sister state, Pernambuco, hosted 200 visitors for three days which began Tuesday, Oct. 30. Participation is by invitation from the governors of the two states. Gov. Jimmy Carter remained in Georgia to receive the Brazilian visitors, but Mrs. Carter was among the group that went to Pernambuco. The groups were made up of people in medicine, business, religion, sports, journalism, agriculture, government, education (students and teachers), music and art.

In both countries, exchange participants spent the first three days of the trip staying in private homes matched by professions. Following the home exchange, the groups had six days to travel on their own.

The Wolfersteigs visited Brazilian schools and churches where they recorded music and presented an organ and voice recital in the opera house in Recife, Pernambuco's capital.

Spencer Bronzed

Edward M. Spencer, director of the financial aid office and computer center here at Georgia College was awarded a bronze medal recently by the Lawrence Institute of Technology in Detroit for his assistance to the college in the field of engineering education. Spencer, on the Lawrence Tech board of trustees

since 1931 and a former board chairman, came to the Milledgeville college in 1969 after returning as treasurer of the Detroit Edison Company.

Lawrence is the second largest private engineering school in the nation, second only to Carnegie-Mellon University in Pittsburg.



Emily Frances Aligood

is an Early Childhood Education major who, during her years at GC, was active in Phi Sigma Honor Society, Phi Mu Fraternity for Women, and served on the President's Council as well as giving her services as a tutor at various times.

Mary Ella Brabson

is a Music Education major, but any activity or organization was likely to find her a member. During her four years here Mary was an active participant in Choral Activities, Sigma Alpha Iota, GC Drummers Club, CGA Library Committee, Agape', Coffee House Committee, Golden Slipper, and the Miss Georgia College Pageant Committee.



William W. Douglas, Jr.

a Business Administration major from Robins Resident, is graduating with a 4.0 grade point average. His achievements comprise an impressive list, foremost among them being: election to Phoenix (the senior honor society at GC), selection for Outstanding Junior for Fall Quarter 1972 and for Outstanding Senior Winter Quarter 1973 by the Society of Logistics Engineers; Dean's Scholar, graduating with honors, AS Degree, Macon Junior College, 1972.

Who's Who in American

Who's Who Among Students in American Colleges and Universities was established in 1934 at the University of Alabama by H. Pettus Randall. He initiated the idea during his senior year in college because he felt that there should be an honorary society for students with outstanding scholastic and leadership records and potential. From this idea grew the Who's Who Among Students Association known today, which lists over one thousand colleges and universities in the United States totaling over 20,000 students in each yearly publication.



Deborah Dale Foster

is a Music Education major who also lists Choral Activities, Sigma Alpha Iota, and appearances in major roles in Amahl and the Night Visitors and A Funny Thing Happened on the Way to the Forum among her activities. Miss Foster was also the recipient of the Max Noah Scholarship, 1972, and winner of the Junior-Senior Women's category at the National Teachers of Singing Georgia State Competition, 1973. Her name also appeared on the Dean's List—EACH QUARTER at GC.

Delia Anita Hammock

is a Dietetics major active in Phi Upsilon Omicron and in various campus related and campus sponsored activities such as Red Cross drive, Honors Program, and Homecoming. In 1973 she is listed in the WHO'S WHO AMONG AMERICAN STUDENT LEADERS. Miss Hammock received the Gena Gwin Flanders Grant from the GC Alumni Association and the first Rita Waters Scholarship from the Georgia Nutritional Council.

Peggy Ann Harris

a Political Science major, is a member of both Phi Sigma and Phoenix Honor Societies, and Agape. She worked on the President's Council, Miss GC Pageant and Homecoming Executive Committees, as well as being a Phillio and JA her sophomore and junior years respectively. Miss Harris became a familiar figure on the Central State Hospital grounds through continual aid in the children's wing. Her name also appeared on the Dean's List 1970-73.



Edith M. Jones

Music Education major active in Choral Activities, Sigma Alpha Iota, Golden Slipper, Fine Arts Night, 1972. Named "Pledge of the Year" by SAI.



Howard Keith Jones

Business Management major, active in Phi Delta Mu, President's Council, Student Activity Budget Committee, Campus Action Team, Faculty Council, and elected CGA President for his Senior year. Outside interests included Intramurals and Karate.



Martha J. Laird

Special Education major active on Community Concert Committee, Faculty Council on Student Relations, and Student Advisory Council to the Board of Regents. At West Georgia College she was active in Chi Omega Sorority, SGEA, and Wesley Foundation and Student Government Association.



Colleges And Universities

Besides the honor that comes with being chosen as a Who's Who candidate by fellow students and faculty, candidates are listed with the Who's Who Association's Student Personnel Service, which issues letters of recommendation and aids in filling jobs in such fields as the Peace Corps and various branches of the government.

Anetta McLeod Moss

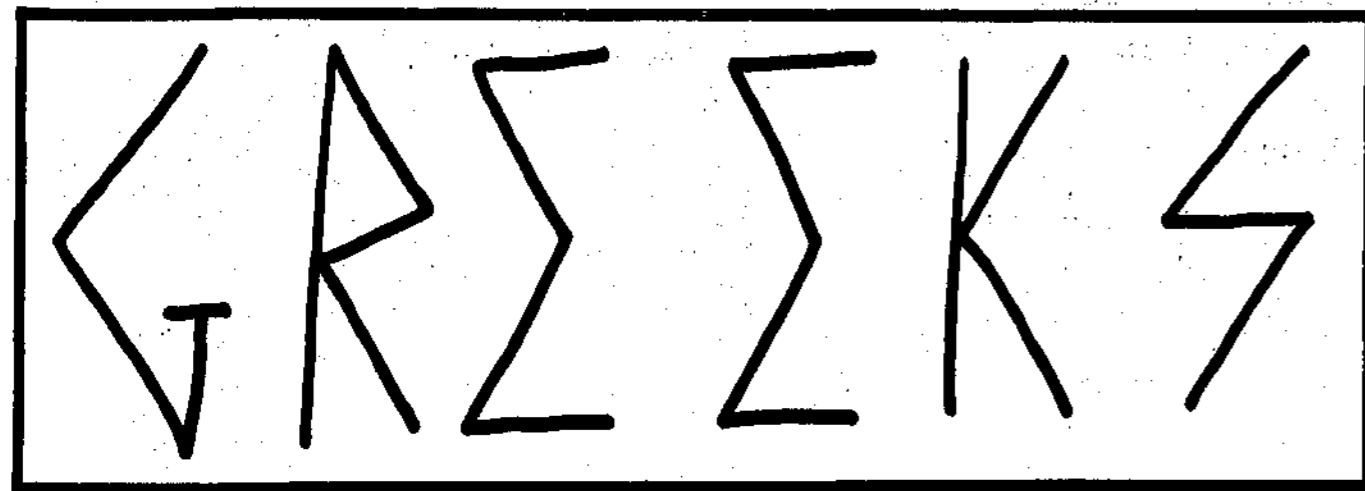
a Behavioral Science and Social Work major active in Agape', College Government Association, Phillios, Junior Advisors, Senate, the Colonnade, GC Alumni activities, as well as being a volunteer at Central State Hospital and representative of Junior Class in Homecoming 1973.



Mary E. Robbins

an English-Education major active in Literary Guild, Agape', College Government Association, Admissions Council Standing Committee, and Miss Georgia College Pageant; also in forming a radio station at GC and Phi Mu Fraternity for Women.





Here Come 'De Greeks Halloween Party

Because the Greeks are coming, Georgia College will be a better place.

This is the opinion of Dean Carolyn Gettys, the guiding light, so to speak, in the inauguration of fraternity life for women on campus.

The benefit to GC? How about a renewed interest in campus activity. Or a new involvement in the life of the community. Or the need for an identity or the feeling of belonging to a group that must exist on a campus where enrollment figures climb every year.

Or a greater interest on the part of high school seniors when GC recruiters tell them about Greek life in Milledgeville.

Currently there are six fraternities at GC, three for men and three for women. Five are national, one is local.

The women's national fraternities are Phi Mu and Alpha Delta Pi, both founded in the last century at Wesleyan College in Macon. The local sorority is Alpha Pi Omega.

The national fraternities for men are Pi Kappa Alpha and Kappa Sigma. The first two were formerly local fraternities with different names absorbed by the nationals. Phi Delta Theta, the third fraternity for men and a national, is new and issuing bids for the first time.

Phi Mu's pledges will be installed on Nov. 10 at which time the colony will become a national chapter. Alpha Delta Pi is in the process of colonizing and plans to become a national chapter at installation services during the winter quarter.

With three women's fraternities well underway, the GC Panhellenic Association has applied for national Panhellenic conference approval of its constitution, and Dean Gettys' determined bid to "have the strongest Greek system in the state" will take a giant stride in becoming a reality upon receiving national sanction.

The Greek system will be brought along slowly at GC, however, as the dean has no intention of "flooding" the campus with fraternities. At the present time, bids just about match interest, leading the dean to the conclusion that a firm Greek foundation rates higher than a proliferation of new societies on campus.

A fall quota of 35 was set for each woman's fraternity this fall and limited to upperclassmen. Bids will be extended to freshmen during the winter quarter when approximately 80 new women students are expected to participate in rushing.

Social fraternities now serve much the same purpose as the sister class program did years ago, when competition between Thunderfunt and Royal Irish held sway.

There is talk now of having quarters set aside as chapter rooms, possibly on the second floor of Terrell Hall, for the six fraternities because of the need for frequent meetings and for records-keeping space.

All national fraternities at GC have philanthropic projects (Project Hope is one of Phi Mu's) and all try to become involved in campus and community life under guidelines and goals established by the national office of each fraternity.

Each national has an alumni advisor and a faculty advisor to promote the interests of the local group.

National officers have been extremely active at GC and have come from as far away as Washington State to help in organizing chapters.

Self-discipline is the hallmark of the fraternity system and involvement is one route to self-discipline, according to the dean, who feels that freedom and responsibility and the capability of finding new directions go hand in hand with the joys to be found in becoming sensitive to the needs of others and then filling that need by sharing.

The Alpha Pi Omega pledges recently hosted a Halloween Party for children at Central State Hospital. Each child was presented a toy pumpkin filled with candy and refreshments were served.

Pledges participating in the project were Kathy Bassett, Bonnie Tegeder, Cindy Cobb, Janet Chamblis, Pam Bates, Susan Chancellor, Blanca Alvaray, Suellen Spillers, Diane Driggers, Suzy Laughridge, Janis Dixon, Pam Trotter, Alecia Morris, and Linda Florence.

Dear Editor:

I am writing this letter in reference to the letter of Danny Nesbit in the October 26 issue of the Colonnade. Obviously, Mr. Nesbit has taken the example of one experience with two coed Greek members and transferred this into a generalization of the Greek system as a whole. It is hard to believe that two people in the same organization do not know the other members, but I am sure this is not the case in all the Greek organizations. In his comparison of the Greeks at Georgia College with the Greeks of other colleges, Mr. Nesbit should take into consideration that this is the first year for most of the Greek organizations here.

It is easy for people not associated with a Greek organization to apply these generalizations, as it is easy for anyone who is ignorant of such an organization. If Mr. Nesbit is content to think that all there is to a Greek organization are the "cute" shirts and the paying of "a lot" of dues, then let him walk low in his ignorance. If not, I personally invite him to talk with myself, or any member of any fraternity in order to receive a more open view of the subject.

Randy Whitfield
President Kappa Sigma
International Fraternity

Equal Rights

On September 5 the sisters of Alpha Delta Pi were pleased to have Dr. Francis Hicks speak to them at their regular weekly meeting. Dr. Hicks, of Milledgeville and formerly a professor of Psychology at Georgia College, shared with the group her views on the Equal Rights Amendment which will come up in Congress this next year.

After presenting the issues of the amendment, Dr. Hicks urged each girl to give thought to the ERA and inform her Congressman of her views.

Phi Mu Carves Pumpkins

At the last meeting of Phi Mu the sisters had a fabulous time carving pumpkins to give to the various administrative heads. The girls then took these pumpkins to the homes and delivered them along with singing. Those who received pumpkins included: President Bunting, Dean Littleton, Dean Gettys, Dean Simpson, Mr. Cox, Mr. Hemphill, Miss Donahoo, Mr. Eddins, and Mr. Monroe. We hope everyone had a nice Halloween.

Pikes Cookout

Saturday, November 3, the brothers of Pi Kappa Alpha fraternity and their invited guests boarded a hay ride truck bound for Rock Eagle. The hay ride began at 2 p.m. at Napier Hall parking lot. Many guests and dates were welcomed at their dorm by the hay ride.

Once arriving at Rock Eagle 4-H Center in Putnam County, the majority of the congregation participated in an uplifting spiritual football game, while certain loyal members stayed behind at the campfire to set up for the meal.

The "others" won an upsetting

7 to 0 victory over the "Brothers." Once returning to the campsite, we all indulged in wonderful "Pike" food. There was a Weiner roast and also a marshmallow roast.

After the meal, everyone boarded the truck and rode to see the great stone eagle built by local Indians many years ago.

To conclude the wonderful afternoon at Rock Eagle, the congregation boarded the hay ride and returned to Milledgeville.

by Gregg Duckworth
Pi Kappa Alpha P.R.

Pluggin'

Slipper would gladly relinquish their roles in many areas where masculine minds and muscles are needed (for instance, carpentry).

It is true that few men get involved, but those who do both enjoy it and find areas in which their male egos can remain untainted by doing tasks necessitating male mind and muscle. Of course, all participants are welcomed to delve into any of the work, but keep in mind that Golden Slipper, as it now exists, could not continue without the small number of fellows who participate.

I still have not explained what Slipper is. Well, it is organized competition between the combined Royal and Irish classes and the combined Thunderbird and Elephant classes. The two groups choose themes and carry them out (1) the second week through posters and displays, and (2) Slipper Night through the actual staging. The Production itself consists of a series of scenes onstage (the younger class) in which anything from a test tube to a toy soldier to a dream castle may be seen. Meanwhile, the elder class is singing songs, telling the stories behind the

scenes. To really understand Slipper, one must either work on the Production or go and see it on one of the Slipper Nights.

Going back to our friend, the "expert"... He thought that the school should concentrate on sports. Sure, why not. But Slipper does not try to compete with the athletic program, or with Choral Activities, or with the GC Theatre, or with any other campus activity. What Slipper DOES do is to give ANY and EVERY student on the Georgia College campus an opportunity to show what he can do in a variety of areas covering the entire scope of the imagination. NO OTHER ACTIVITY ON THIS CAMPUS OR ANY OTHER CAMPUS GIVES STUDENTS OF ANY INCLINATION THE OPPORTUNITY TO WORK TOGETHER WITH STUDENTS OF SO MANY DIVERSIFIED INTERESTS AND TALENTS!!!! This is the one campus activity that does not require that one be able to act, sing, or score points in an athletic contest. This activity allows any student the freedom of working and using what he has in the ways of talent, without regard to quality, quantity, or nature of talent.

Dear Student Body,
I would like to take this time to express my appreciation to the student body for taking interest in Georgia College enough to stop and write their personal views and opinions. These past few weeks, the Colonnade has received several guest editorials. Colonnade staff welcomes any and all views from GC's campus body.
Hopefully, by writing what you feel to be the "right way," changes will occur in your favor. If not, at least others know where you stand. Keep it up, Georgia College. We might just get some where in this big world!

Sincerely,
Suellen Griggs
Associate Editor

**THE TRAFFIC LIGHT
WILL ORDER
Fraternity And Sorority
JERSEY'S
IN ONE WEEK'S TIME
Go Out And See Them At
HATCHER SQUARE**

How would you like to live in a building where you had to share one washing machine and one dryer with 199 other people? How would you enjoy crawling from the basement to fourth floor with a load of wet clothes to dry them in the only functioning dryer in the dorm? We won't even mention the fact that the washer is in the basement and the dryer is fifty-six steps higher. You must admit that we have to be desperate to even bother washing clothes, so just imagine what it's like to have only one of each machine! These luxuries and many more can be yours by becoming a resident of Napier Dorm.

Campus Wide Prayer Breakfast to be led by Dr. John Sallstrom Monday, Nov. 12, at 7 a.m. in the Hoke Dining Room of the Union. All students and faculty are invited.



I Awoke This Morning

I awoke this morning
Just as I had on other mornings.
The clock rang with the same ring,
And with just as many rings.
I enjoyed the hot shower
Just like many other hot showers.
I stopped to water the flower,
And I regretted not having other flowers.
I drank my cup of coffee and ate my cake
Just like other cups and cakes.
I opened my door and began to shake
Just like all the times with shakes;
For while I had dreamed in my sleep,
The keeper of the great keep
Had just taken the world away for keeps
And without a warning of any kind
Had left me behind.

Guy Mathis

Listen!

Listen! Can you hear it amidst
the clamor of the passing cars.
Listen! It is all around.

It is the voice of peace, of identity,
of caring.
It is the voice of loving, of pain,
of want.

It is the voice of young man's death,
of a mother's tears, of an old woman's loneliness.
Listen! Can you hear it amidst
the clamor of everyday life?
Perhaps you are afraid; "What
will others think if I, important
me, takes time out to listen to the
wind?"

Listen! Can you hear it amidst
the sands of fleeting time?
Listen! Tomorrow you could be
that voice in the wind and what
then?

Maybe, perhaps, others won't be
like you, important you.
Perchance they will take time out
to hear the wind or will they be
afraid?

Trude Tharpe

Sometimes Love

Sometimes love comes
A moment
In a silent whisper
And leaves only a memory
Soft moonlight through a pine
tree
Love's best that's free
I ask not tomorrow of her
And she not tomorrow of me
The misty morning came down
Hard
On the gentle night
Bringing its warm golden light
To a faint smile
And a memory

Kenneth Pope

Skippy

Smooth and creamy
really creamy
sometimes chunky
Get your teeth your teeth gunky
Hey!
Ain't peanut butter fine?

Carolyn Nicholson

Why the War Must End

Uncle Sam is drafting men
To fight in his war.

But most people today,
Don't know what it is for.
But the war goes on;
And more men are dying
The mothers are home praying;
The wives are home crying,
But the men and the boys
Doesn't worry cry no pray.

They just smile and say to
themselves —
The war will be over someday!
But what does Uncle Sam know
About a thing such as crying.

He's never seen the face of a
mother
When she hears of her son dying.
But Uncle Sam thinks he's
forgiven,
because he sends you money and
a letter.

He says your son was very brave
And he couldn't have done it
better.
But does this take the place of a
son you love, son dear?
A son who brought you joy
whenever he was near.

So my reasons for ending it
Are beyond a shadow of a doubt;
This bloody war must end
Before our men are wiped out!

George Washington Kitchen

The night silence, shattered by a boot
And echoed in the rattle of the leaves
Excited by the cat-like curious wind,
settles over the frost-bitten shoot.
Evening has come and grieves
For crouching morning to descend.
The night air, shaking with the echo
Of footsteps on a deserted street,
Muffles the opening and closing of a door.
From the alley creeps a shadow,
One that you would hardly greet,
Favoring one foot a little more.
Keeping out of light and out of sight
sipping a tonic to warm the blood,
And wondering if young mister flood
Will live or die as cory did last night.

Together we'll walk
Along a crooked path,
Of facing the future
And accepting the past.
Forward and onward
Until our souls find
That inner sweet peace.
My mind has found yours
And yours has found mine,
And all that we need, hon,
Is just to take time.
Smile? Yes, I'm smiling
Cuz I'm learning to now,
And you know what you've done
You've just showed me how!
Walk softly and smoothly
And walk closely by me,
And I'll show you the pleasure
Of thinking of 'we'.
I want to assist you
I want to be there,
So the moments which are
hardest
Will be easier to bear.
So relax and accept that
Sometimes we need to be led.
Smile sweetly, smile softly
And think often of me,
And I'll show you the pleasure
Of making it 'we'.

Kathy Kronus

**Feel Creative?
Share
the mood with
Strands
Box 852**

May the cry of the Bengal
Warrior
Resound wither your walls.
May the grass your feet tread
upon
Wither beneath your heel.
May the great white whale
offer you his companionship
in an underwater adventure.
And may the mason be your
tailor.

Carolyn Nicholson

"Strands" would like to
hear from the students and
faculty of GC on the
possibility of setting up
some informal creative
writing workshops. These
workshops would be
primarily for those inter-
ested in the creative
writing taking place on
campus. It is hoped that
such sessions would serve
to stimulate appreciation
for literature in general
and to refine the indi-
vidual's writing skills
and style. If you are in-
terested in helping to start
these workshops, please
drop a line to "Strands",
Box 852.

George Washington Kitchen

What's Going On

by Naomi Brown
11-16-72

I was taken from my mother country
To be placed in a world of poverty,
And to be confronted with wars.
Look at me, you see how you have destroyed
Me and yet you are still trying to destroy my people.

I am too tired and weary to push you down.
I have been fed up with you winners
That I am now without power to move or resist you.
I lay at the point of death.
And still you bluster out hostility.

You inculcate your laws,
You killed when there was no cause
And you gave to those that did not need,
Yet you took from the needed.
Why? We're all Americans.
So, why aren't we equal?
Can you tell me?
Oh! I get the point,
My skin is black and yours white
And that means you get it all easy.
While I have it rough and get nothing;
It means you lead and I follow.

But don't we all search for a better life
And a better world?
Don't our children need the same things?
Aren't we human?
Yes, yes, yes but our skin is black and not white.

Listen to me children
Try to understand me
And my struggle to survive in America
And so did your ancestors.
We worked from morning to night
To build this country
Yet we get nothing worth cherishing in return.

We fought and died so you could have that
Which we were deprived of;
We turned years of despair and oppression
Into a period of rebellion and hope.
Still you have to fight to get the same.

I say,
Don't give up children; the time is yet
To come when both BLACK and WHITE
Will unite into one big group and live
In peace forever as one color.

The Edge of the Desert

I, with others in the evening quietness,
Discuss the shelter of shiny tin,
Constructed to protect those who confess
A desire to try the forbidden Sin.
We watch clouds gather and begin their rain;
We stare into the wasteland—small yet vast,
While we shiver with the wetness and pain,
Casting truth and virtue away at last.
For in the tenants argued and spurned
The evil of the human mind breeds,
Feeding the wasteland baked and burned
By the heat of wicked infamous deeds.
With evil in its heart, the human mind
Denies the evil as though it were blind.

Guy Mathis

Books Unlimited
143 W. Hancock St. Milledgeville, Ga.

•Cameras •Films •Gift Items

•Magazines •Books

Charles Pennington, Prop.

Mack Hudson,
GC Student



Slipper Is Dead And Buried?

For the past two years I have been the sponsor for the Royals at Georgia College. During this time I have seen people working together for the best Slipper ever. Contrary to the implications in the article "Answer on Slipper" in the November 2, 1973 Colonnade, I would like to see the students working to have another great Slipper. Many of the students working on Slipper do not have the special talents necessary for drama, sports, chorus, band, etc. Thus working with Slipper will give these students an opportunity to have a part in another important extracurricular activity at Georgia College.

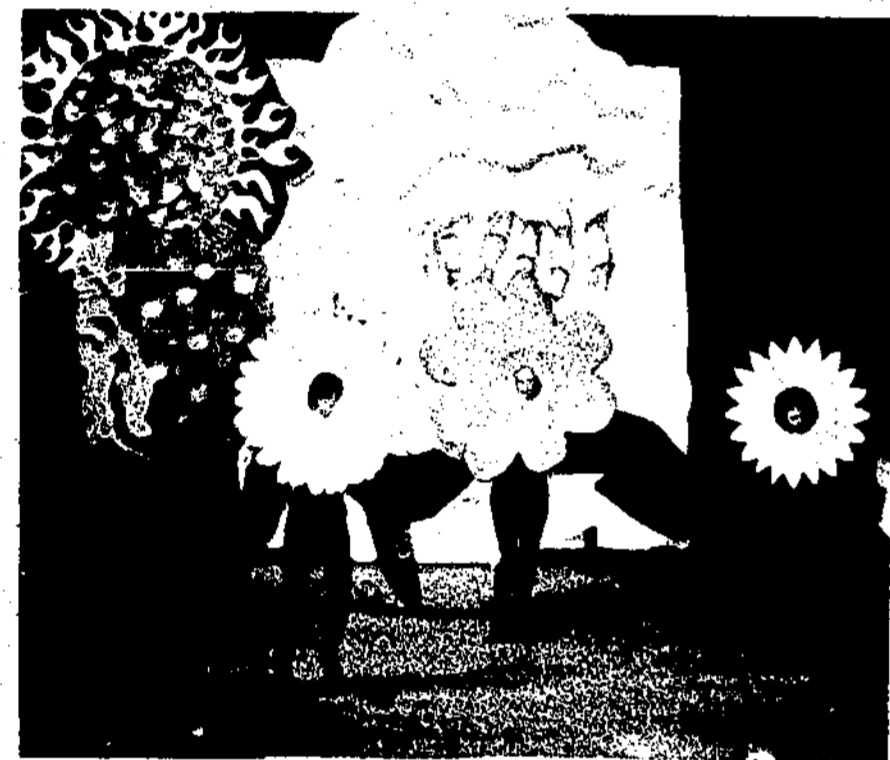
the traditional production of Golden Slipper. These people supposedly voted on the basis of the wishes of the members of the various classes. However if this were the case only the Senior officers and sponsor would have voted no because 64 per cent of the Seniors voted against having the annual production. On the other hand, 69 per cent of the Juniors and 73 per cent of the Sophomores voted to have Slipper. Therefore it would seem that if the Junior and Sophomore class officers and sponsors were voting on the basis of the majority rule Slipper would still be alive.

The class officers and sponsors voted on whether or not to have

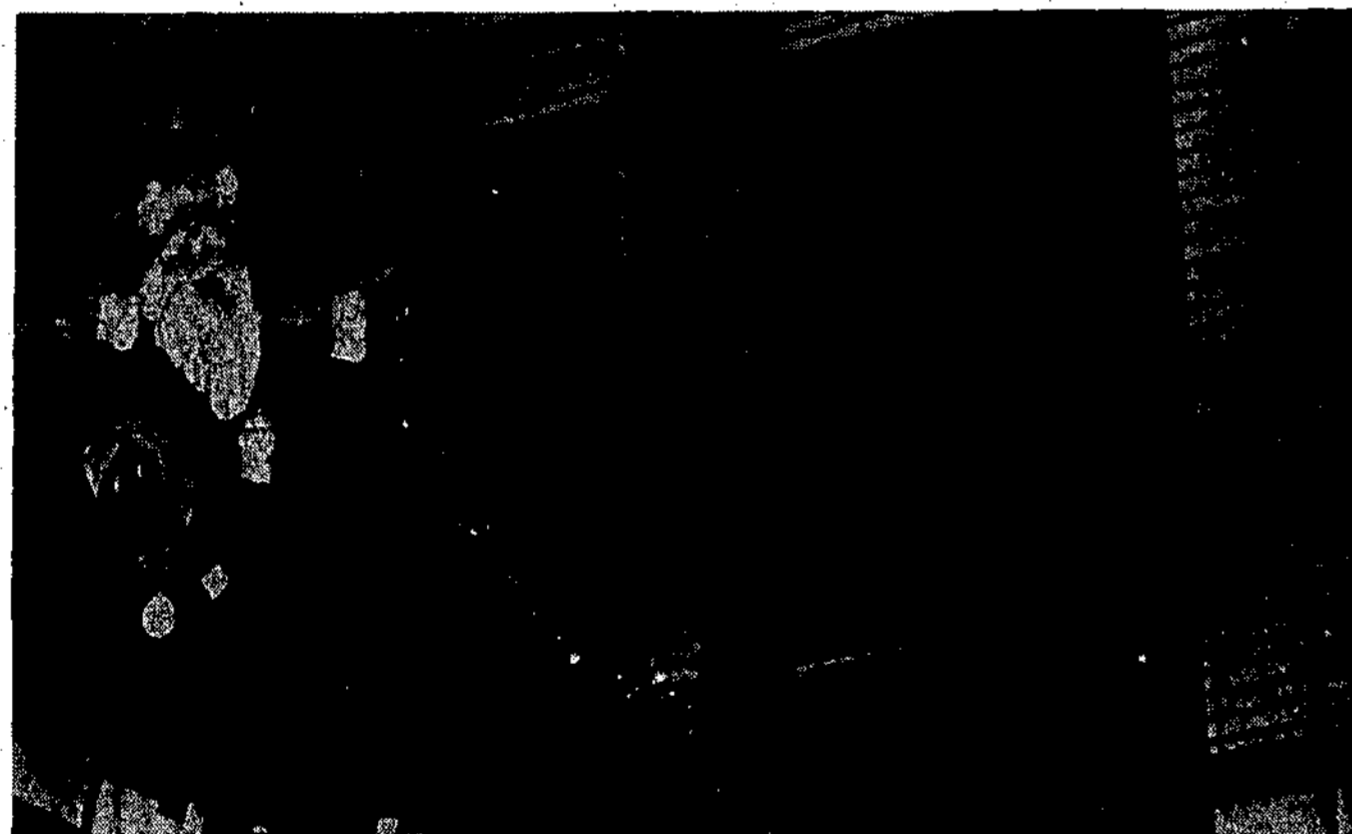
Martha Walton



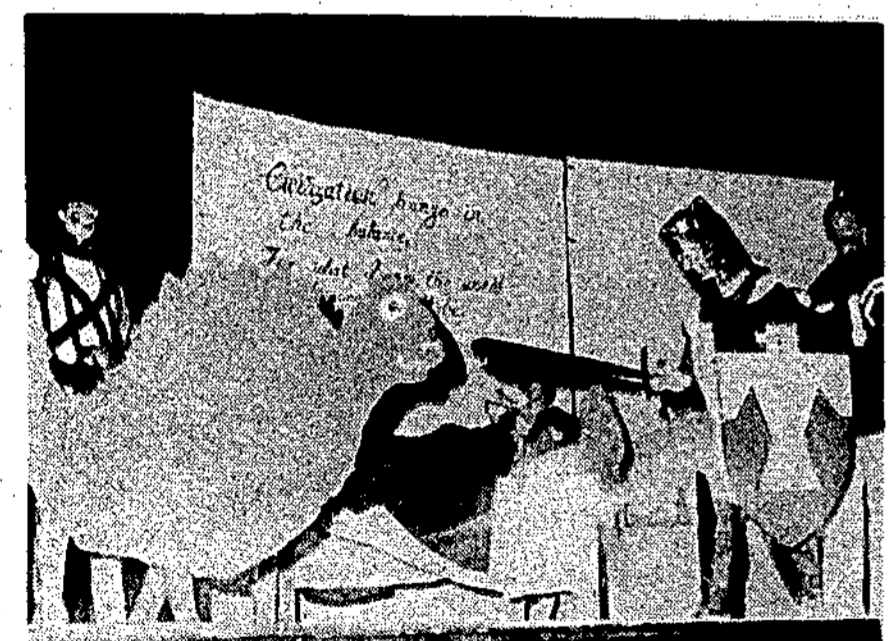
We're Crimson born and Crimson bred...



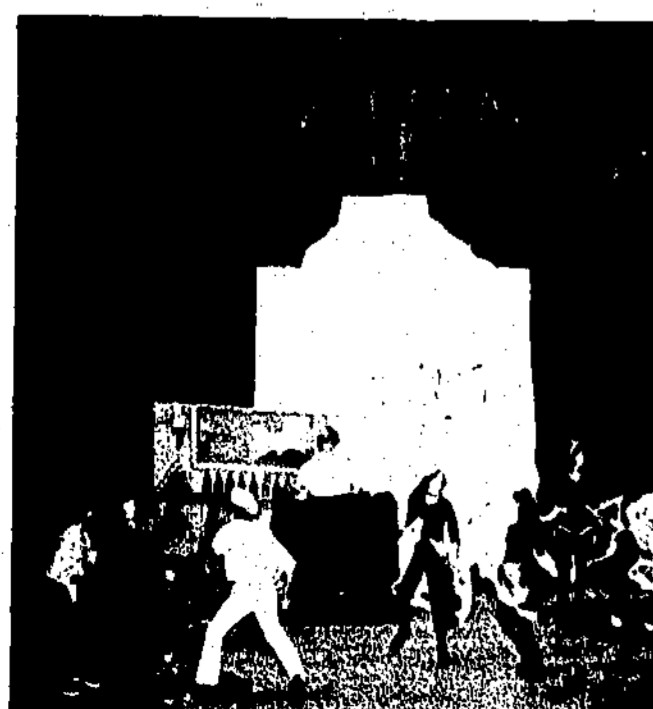
... And add some black and white ...



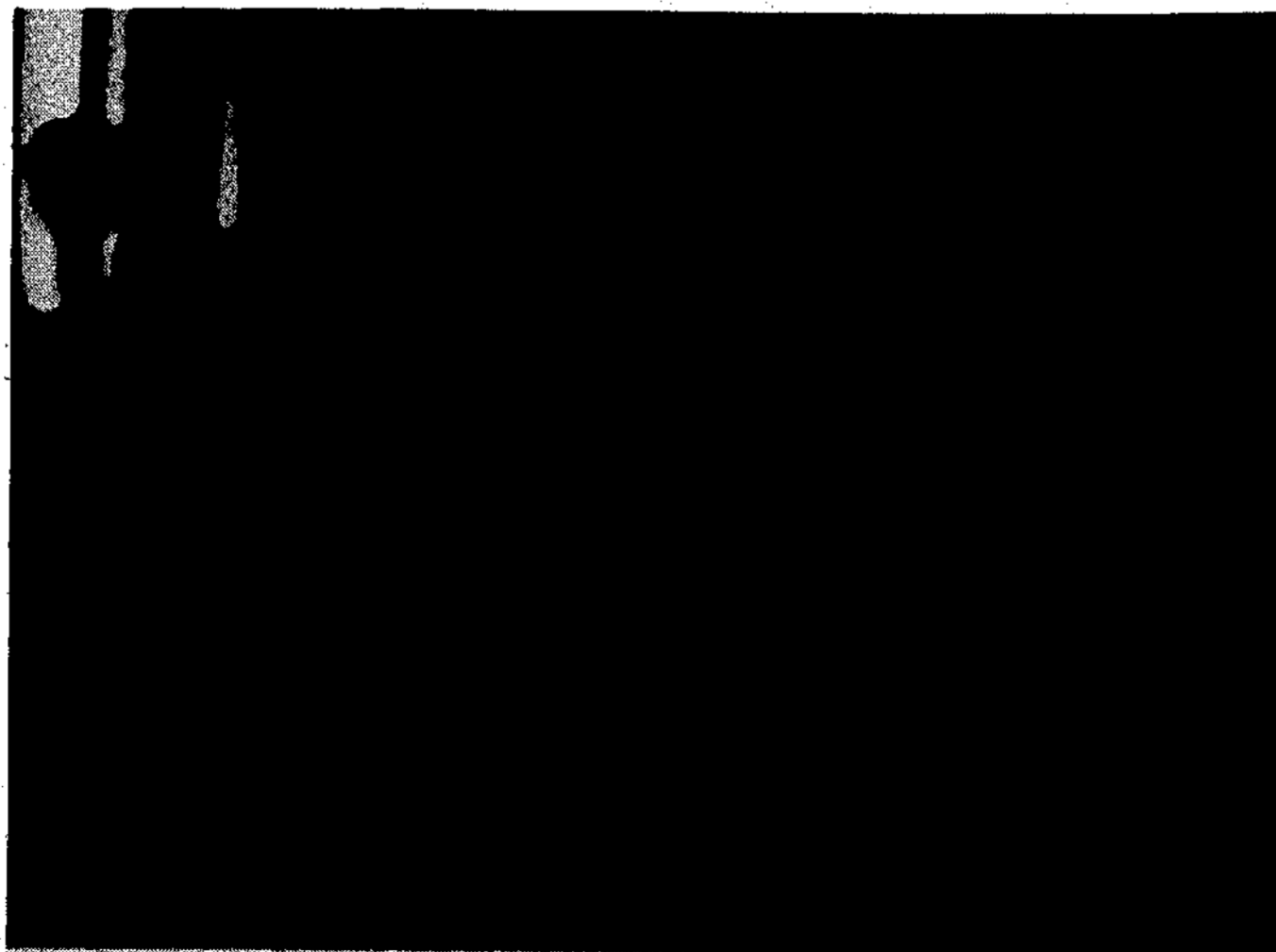
... And then you've a gang that's always right ...



Only sophs and sophs alone can win that Slipper bright



It's a dream come true ...



And bring the tears of joy on Slipper Night.



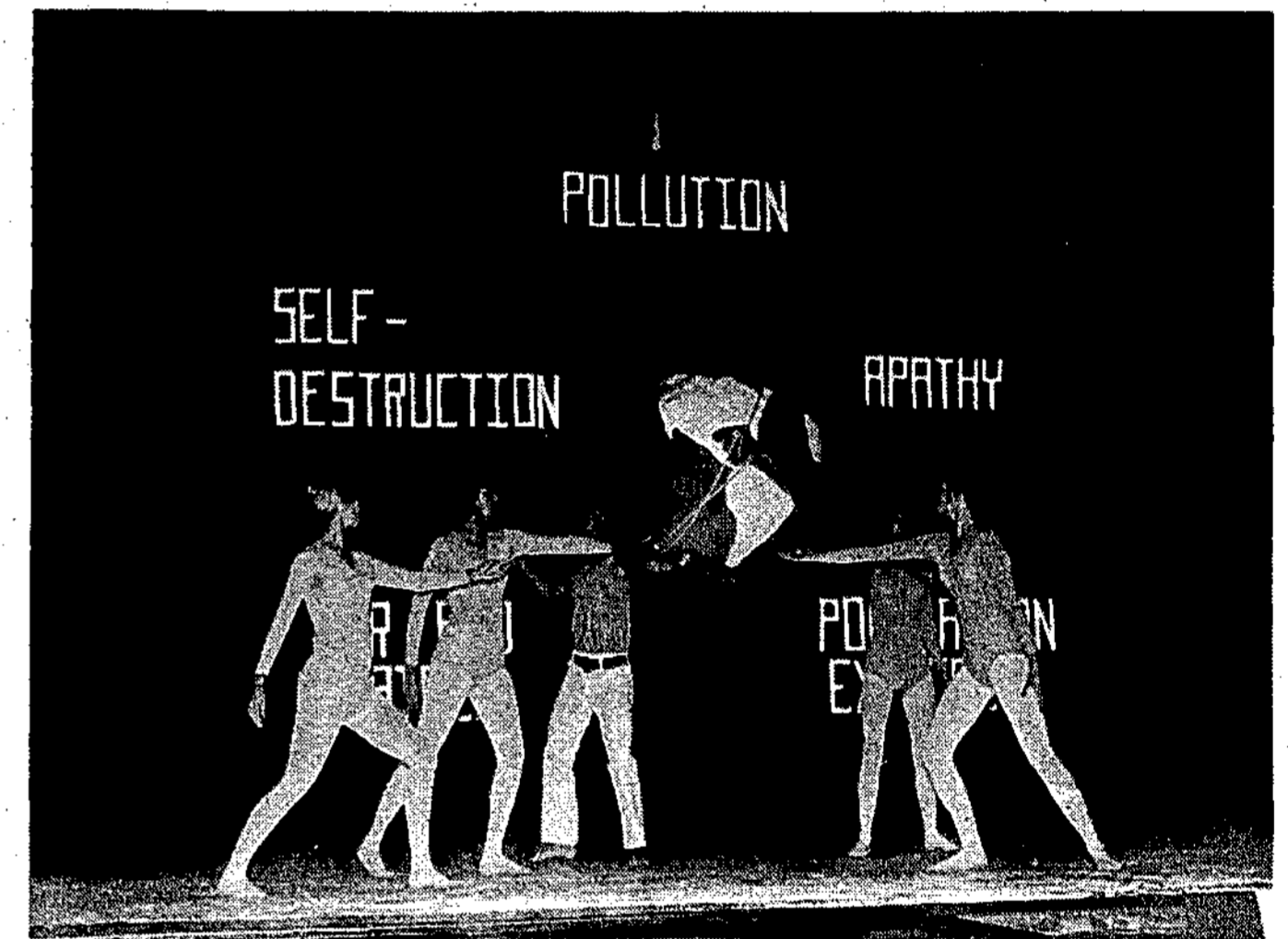
Take a little Irish spirit ...



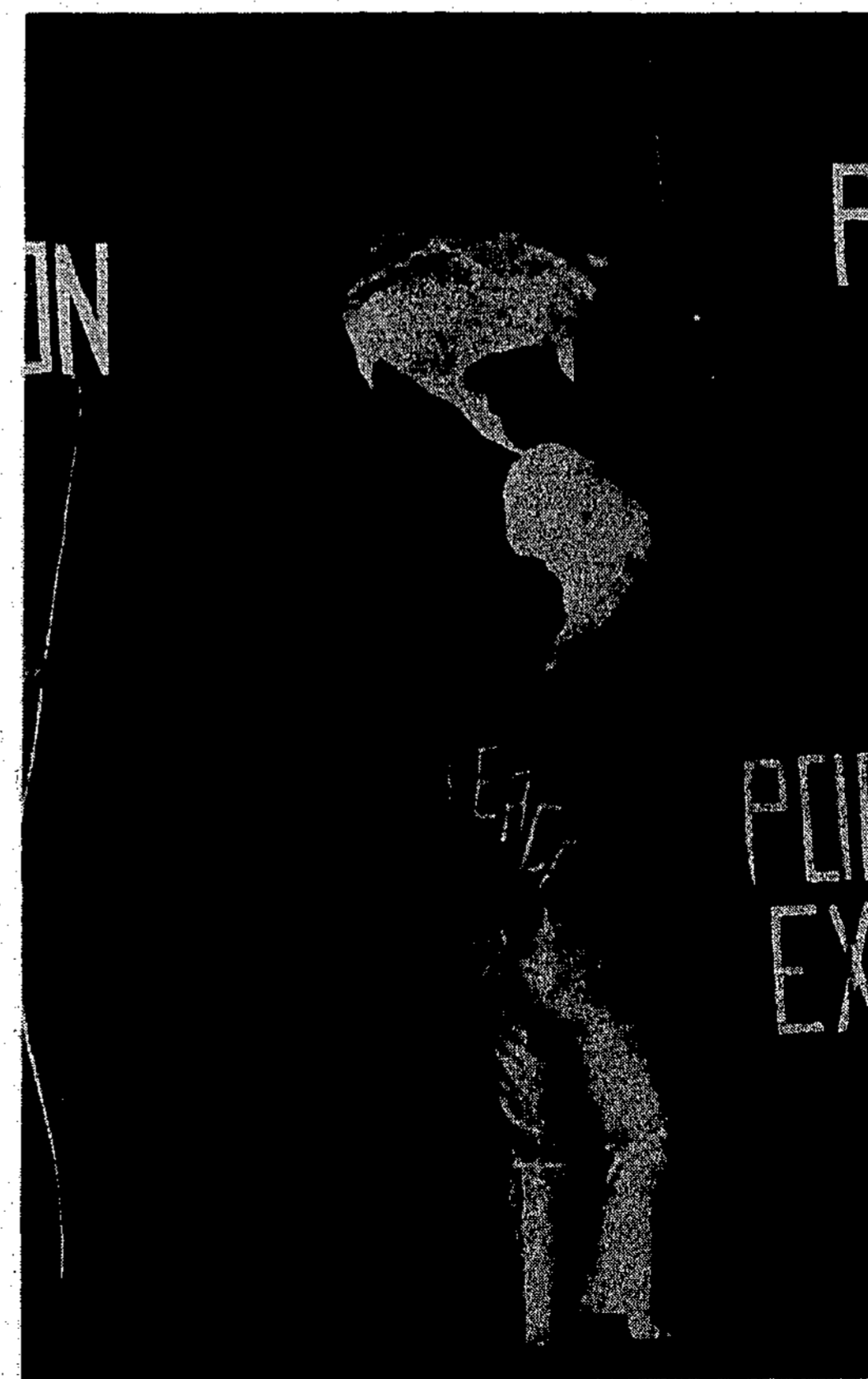
Mix it with a Royal hue ...



"Something's Gotta Give"



Royal Irish concept of the world and its problems—



and their solution. (For those who did not see the 1971 production, Peace was the answer to the last bond holding the Earth at a standstill—war! When war was eliminated, the world began to revolve once more).

Keep On Pluggin'

It has come to the attention of this student that many new students — that is, those students having entered since last Fall Quarter — are unaware of just exactly what Golden Slipper is. These pages then, are given over to explaining just exactly what that annual production is and does.

Golden Slipper — two weeks of bustling activity turning cardboard, chicken wire, lumber, plastic, aluminum foil, muff wraps, and paint into cakes, suns, cacti, clocks, spaceships, cars, trains, mountains, animals, rainbows, huge metronomes, etc. — two weeks in preparation for an extravaganza unlike any production in any other college anywhere; an extravaganza bounded only by the limits of imagination and ingenuity.

Originally, Golden Slipper was a stunt night for orientation of freshman girls to college life and for getting them to know each other a little better. As the school grew, so did Slipper grow and change until it became the production we know today: two weeks of feverish competition between two rival factions, Thunderphants (classes of even years) and Royal Irish (classes of odd years). Parts of the

original idea still remain — Golden Slipper is still an excellent way to get to know people, male and female (In fact, the first girl I dated at GC I met at Golden Slipper and liked what I saw and the person I got to know. I still do).

Some students, especially certain transfers who feel themselves above the hustle and bustle of Slipper, believe Slipper to be female-oriented. One was even heard to remark that "You can't continue to concentrate on these remnants from the girls' school — what you have to concentrate on is sports." Boy, was his ignorance flaunting itself for all to see! Unfortunately, since he had never bothered to get involved with Slipper, he felt himself an authority on the subject and was "kindly" explaining the matter to another student who was unaware of what Slipper is.

No; Slipper is NOT female-oriented, not any more. Female-dominated, yes. It has to be for there are not enough men interested in the project. The majority of the girls who work on

Continued On Page 4

Who's Who (Cont.'d)

Timothy E. Walker

a Music Major active in Choral Activities, Phi Mu Alpha Sinfonia, Pi Kappa Alpha Fraternities, and Agape', served as Freshman Class President, Campus Coordinator of Agape' and treasurer of Phi Sigma Delta; he is secretary of Student Activities Honors Committee, publications Committee; He has made many contributions to Campus Life, Good Citizenship and Leadership such as Cancer Walk-A-Thon, Blood Donations, Central State volunteer, Milledgeville Little Theater "A Funny Thing Happened On The Way To The Forum"; Opera "Amahl and the Night Visitors."



Rane Webb

an Elementary Education major, philio, SGAE, Chorale Activities, President of Bell Dorm; Secretary, Chairman of Bell House Council, Entrance Chairman of Slipper in her freshman year, Dean's List; her interests are Babysitting and Sewing.

Randy Whitfield

a Business Administrator major; member of Pi Beta Alpha Fraternity and in 1971 was a member of Circle K Fraternity; Positions on Campus are, Sec. of Recreation, Sec. of Pi Beta Alpha social fraternity and was Vice-President of Ennis Dorm, Sec. of Student Activities, Honor Council, Budget Committee, Entrance Chairman of Slipper, and Philio; enjoys Intramurals.

Jan Williams

a Sociology major, member in Phi Mu Fraternity for women in '73, cheerleader and Honor Council for '71-'73, Balfour Representative for Phi Mu in '73; Many contributions to Georgia College such as Head Start, Swimming instructor, slimnastics instructor, and helps in the Presbyterian Church.

The staff of the Colonnade offers its congratulations to those students elected to WHO'S WHO. We only regret having to use old pictures, or in cases where no pictures were available, not having any at all. Many synopses were brief in the extreme, but this in no way is indicative of the parts you have played in your years as students at Georgia College. We of the Colonnade do hope, however, that your achievements and accomplishments here are indicative of the productive lives you will lead after graduation. The best of luck to you all.

The Staff

Change In Life

Change is a phenomenon of our times, but we fail to appreciate it or to recognize the amount of change until we compare conditions now with some time in the past. Perhaps it is now fitting to look back at the changes that have occurred since Georgia College became a coeducational institution.

The enrollment at the Woman's College of Georgia was 1101 in 1966 compared to 2840 in the fall quarter of 1973. The growth from 1966 to 1972 was 132.5, a rate exceeded in the University System by only the Medical College of Georgia and Columbus College which changed from a two year school to a four year program at the same time Georgia College became coeducational. Since 1967 there have been six new junior colleges added to the University System: Bainbridge Junior College, Clayton Junior College at Monroe, Emanuel Junior College at Swainsboro, Floyd Junior College at Rome, Gordon Junior College at Barnesville, and Macon Junior College at Macon. There are two or three more in the planning stages at this time. Georgia College has gone from the 17th largest of 23 units to the 11th of 29 units. In this time the enrollment surpassed the enrollments at Fort Valley State College, Georgia Southwestern, North Georgia College, Albany State College, Middle Georgia College and Abraham Baldwin Agricultural College. At the present time the enrollment is exceeded by the following schools: University of Georgia, Georgia State University, Georgia Institute of Technology, Georgia Southern College, West Georgia College, Valdosta State College, Columbus College, Armstrong State College, Savannah State College and Augusta College. It should be noted that 9 of these institutions are located in large metropolitan areas with a large population from which to draw students.

To better illustrate the effects of this growth we will focus on one department, the biology department to demonstrate the impact of coeducation and growth. The staff of the department has grown from a department of 3 with one Ph. D. to a department with 9 full-time faculty (8 with the Ph. D.) and two part-time instructors. In 1966, there were 633 students enrolled in biology classes and 86 in the summer. Last year the department taught 1623 students in the academic year and 268 in the summer. This fall quarter more students were registered for biology courses than the entire 1966 year. The number of courses offered has increased from 13 to 42 different courses. The number of majors has increased from 40 in 1966 to over 135 last year. The departmental budget has increased from \$35,000 to approximately \$170,000.

The Staff has published 84 scientific articles and there are 17 currently in various stages of preparation for publication. From eight graduates in 1966 the department now graduates over 30 majors a year. Although they do many things after graduation, 5 or 6 will go on to graduate school and 2 or 3 will enter a professional school.

The department along with the chemistry and physics department recently moved into a \$1,200,000 addition to Herty Hall. In addition 6,000 square feet of the laundry has been made available as a research area. The animal house now is functioning with a primate colony of five monkeys along with other research animals (rabbits, laboratory rats and guinea pigs).

The M. Ed program now has 55 students enrolled. A M.S. program in biology was approved last September and there are now 20 students in the program with the expectation that 5 will graduate this year. This past September the Board of Regents approved the Ed degree in Biology and one student has already begun a program which will lead to the T-6 certificate (between 15 and 20 students per year are expected when the program becomes established). Also this September the Board of Regents approved a new B.S. program in environmental science—the only one in the state. Dr. John Aliff of the Biology department was the chairman of the committee that worked to establish the new program. A new interdisciplinary adjunct for research and service was approved last year. It is called the Center for Environmental Study and Planning and operates under the direction of Dr. Lloyd Chestnut of the Biology Department.

Since 1970, the department has received 15 grants from such agencies as the National Science Foundation, National Institute of Health, the American Institute of Biological Sciences, Union Foundation and others. The total extramural funding exceeds \$150,000. Thus far this year six other grant proposals have been submitted.

Perhaps this review would give you some insight into the growth, the expanded horizons, and the changing dimensions of Georgia College. There are 18 other departments and many other programs which have been expanded and altered beyond recognition. Georgia College is truly a changing institution. It is hoped that these changes and those to come in the future will make Georgia College an institution in which you could be justly proud.

Colonnade
Meets Every Thursday
Nite At 6:00
Everyone Welcome



Dr. Joseph Specht, Chairman and Professor of Business Administration and Economics at Georgia College, toured the McGaw Laboratories facilities with his Personnel Management class last Thursday. Personnel Manager at McGaw Gordon Gibbs led the tour. Pictured Student Silvia DePalma, Senior at GC, has her tresses covered for the tour while Dr. Robert Anderson looks on.

HEAR
DAVID WILKERSON
author of the best seller
THE CROSS AND THE SWITCHBLADE

FEATURING FORMER ROCK SINGER
DALLAS HOLM

NO ADMISSION CHARGE

MACON COLISEUM
NOVEMBER 16, 17, 18, 1973
FRIDAY & SATURDAY SUNDAY
8:00 P. M. 3:30 P. M.

SPONSORED BY THE DAVID WILKERSON YOUTH CRUSADE COMMITTEE



THERE IS A GIFT SHOP
IN MILLEDGEVILLE

HERITAGE
HOUSE
116 South Wayne Street
Milledgeville, Georgia 31061

That Special Place For That Special Gift

Editorial Forum

Dear Student Body,
I am a first quarter Freshman and I am writing in response to the failure of Golden Slipper. When I came here in September, I began hearing a lot about Slipper. More or less how fantastic it was.

I as well as other Freshmen didn't really have a good basic understanding of what Golden Slipper was. I began to do some investigating about this "thing" called Slipper. I talked to several people about what Slipper was. A friend of mine had two records of Golden Slipper that were made from the production of Slipper in 1970 and 1971. From these records I began to feel and know what Slipper was.

In my opinion, the majority of Freshmen and transfer students didn't even know what Slipper was when they voted. The ballots on the Slipper vote didn't concern the question of having Slipper it just stated "Would you be willing to help on Slipper?" Also another minor mistake was the fact that the ballots did not include the classification of the Freshman students. The main question on the ballot should have stated "Do you want to have Slipper?" Yes or No?" The Freshmen and transfer students should have been given a brief synopsis of what Slipper was; the purpose of Slipper and when it would be! The ballots were entirely incorrect and therefore no one really knew how to vote! A lot of people still don't know what Golden Slipper is!

I am in definite agreement with Mr. Young, that Golden Slipper is a tradition of Georgia College and why should a tradition be abolished when no one knows how to vote!

Sincerely,
John Williamson

Dear Editor,

I'm writing in response to the letter from Danny Nesbitt that was published October 26, 1973. This letter is not meant to spoil his laughter but rather to set him and others on the Georgia College campus straight about the Greeks here.

He stated of the Greek system, "I have been around enough schools to see that they can be worthwhile, collegiate and socially benefitting institutions." In this respect I agree. Sororities and fraternities tend to pull young adults together in these respects. They offer us an outlet for fun and good times that the college sometimes cannot offer. We also pull together to work for a common cause such as feeding needy children, etc. I don't think Greek life is designed for everyone, but rather for those who feel they can offer something to the Greeks and to the community and the world.

Continued On Page 11

KIRKPATRICK'S PARTY SHOP

Valentine
Gifts
Cards
Candies

452-2844

110 W. Green St.
Milledgeville, Ga.

DEAR EDITOR,

We realize that it must be a great task to plan and prepare meals for everyone that eats in the student union. We also realize that the kitchen help may be pushed for time when it comes to preparing a meal. But it still seems that food quality control could be somewhat better than what it is.

We have grown somewhat weary of finding, among other objects, bugs, both live and dead in our food, along with the remains of cigarettes, hair, and other foreign objects. When it comes time to report these discoveries, Mr. Shadwell is very hard to find, and the other dieticians merely offer to exchange food with the person, and seldom pass the word to Mr. Shadwell. These above complaints were passed on to Mr. Shadwell, and he said that complaints should be passed on to him, and to get in touch with him at a later date to make sure the employees passed the word to him.

In addition to the food quality, the size of the servings should be under closer scrutiny. We may not all be Home Ec. majors, but we feel sure that small potatoes do not cost ten cents apiece, and apricots do not cost twenty cents apiece. It is also under question why macaroni and cheese can be designated a meat dish one day and a vegetable the next. In addition to this, it seems funny that, while salad and dessert both come close to the price of most vegetables, a vegetable cannot be substituted for a salad, or that you cannot receive two servings of the same vegetable in place of two different ones.

We realize that these complaints may seem minor, but it is our money which is helping to purchase this food, and we feel that we should get what we are paying for.

In closing, we would like to say that we like nothing better for dessert than a good piece of pie. But when it remains glued to the bottom of the bowl when turned upside down, you could say it was a tad too thick.

Respectfully yours,

Jimmy Miller, Greg Wolford "Wolf", Debbie Ridley, Teresa Drum, Mack Ellis, Sandy Anderson, Donald L. Johnston, Michael Ian Vance, Sharon Reece, Jeffrey L. Taylor, Sheree Spillers, Charles Grimes, Patricia Perry, Michael Fountain, Joe Braidy, Jr., Bonnylin Daniel, Susan Vickery, Jim Davis, Walter Young, Lamar Huff, Mike Thornton, Josie Liles, Debbie Duse, Lee Davis, Mary McFarlane, John McKibben, DeAnne Cheek, Eve Tillman, Michael Peck, Willie Mae Hollingshed, Ardallia Hollingshed, Carolyn Johnson, Jacquelyn Whitaker, Jacquelyn Redd, Colleen Maginnis, Cheryl Harper, Debra Cawthon, Vickie Wilson, Pat Roebuck

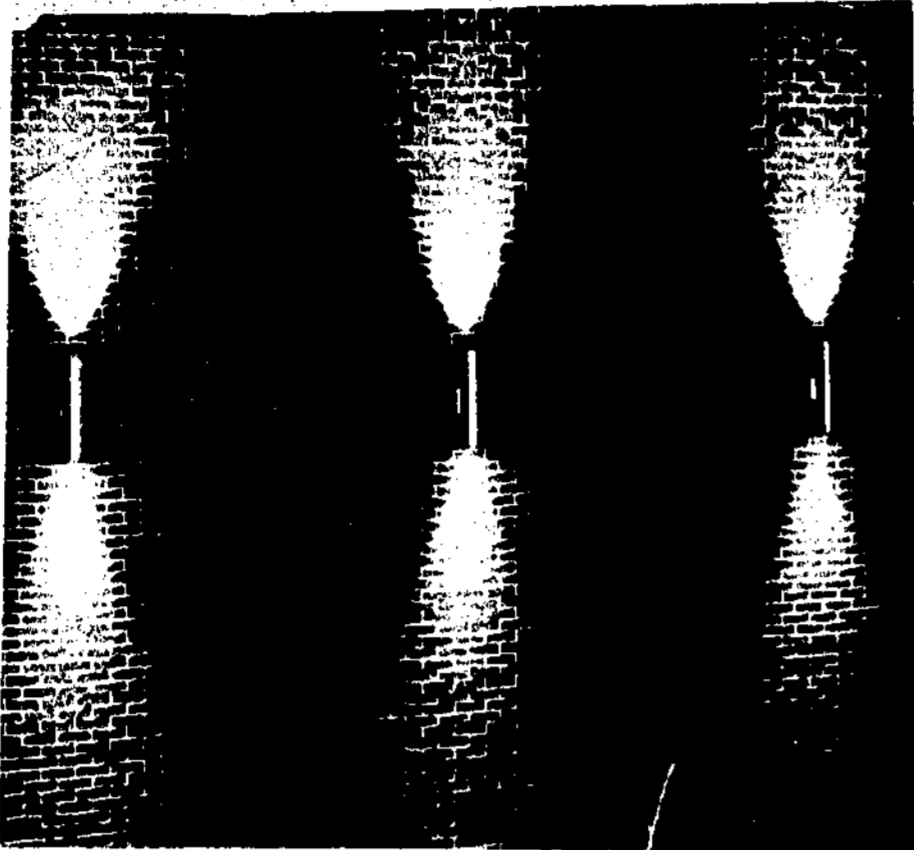
MAIL EARLY

TO THE ARMED FORCES OVERSEAS



Light Shines

by John Williamson



Dear Jay-J

Dear Jay-J,

In noticed last night in Napier that students were once again using the "formal parlor." I began to wonder, however, why? Were students once more in there because we are again permitted access to the parlor or was it because the Sheriff of Napier and her Keepers of the Realm happened to relax their vigil momentarily and allowed the students to the unnoticed into the Sanctus Sanctorum?

That parlor is a part of Napier Hall. Residents of Napier Hall paid an exorbitant fee to reside in that great mausoleum to technology and therefore, should be permitted free access to all parts of the Commons Building, barring the House Directrix apartment and office areas.

The parlor came equipped with furniture kitchen, and ready-made rules governing the use of the room itself (no smoking, for example, or studying), the furniture, and kitchen (no NOTHING!). Then some fool decided to slash the furniture. A childish form of expression, but not severe enough to warrant the room's being posted off limits to all students. Furthermore, the Powers that be issued an edict from their lofty haven of Parks saying "Thou shalt not, excepting for formal functions, use in any shape, form or fashion thy kitchen which the Architect hath bestowed upon thee." Perchance, under other circumstances, this

would have been a sensible move. However, those same Powers also said, "Thou shalt have no other kitchen save the one forbidden thee." I realize that there is a room downstairs in the Commons Building which contains a range. But, did those omniscient Powers not foresee the difficulties of baking or keeping foods cold on a range unit?

Napier Hall was once described by a Professor of this institution as being "Utilitarian Ugly." Not only is this true but Napier is also an insult to human integrity and an example of Administrative Despotism! Rooms we're not allowed to use, ditto for certain facilities—by the way, I still fail to understand why the paper towel dispensers were removed from Napier bathrooms last year. After this year Napier will be the sole surviving dormitory for men. The men are, therefore, forced into Napier, and into paying higher dorm fees than certain women on campus (i.e., those residing in Sanford, but at least they have a choice!) as well as not being able to choose the environmental conditions under which they shall live for the year.

Perhaps I have erred in my judgment; perhaps I should not have written this letter, but I am sick and tired of seeing force and stupidity come into play when there is no need of either.

Sincerely yours,
Hazel Matthews

Have you noticed any changes here at Georgia College in the past two weeks? There have been several changes for the betterment of our safety here at GC.

The most important and greatest change is the majority of the lights are burning on campus. As you all know the lights surrounding the Cafeteria have not worked since the beginning of school and if you ever walked by the cafeteria at night you found it quite hazardous, not only due to no lights, but the hedge was in bad need of trim too!

I talked to Mr. Billy Woods of the Georgia College Maintenance Department about these hazardous conditions facing our safety. Mr. Woods told me that the Maintenance Department had several complaints about the lights and the hedge and other hazardous spots on the GC campus. Since we've talked I've noticed that the lights are shining every night both in front of the Cafeteria and all around the Campus and the hedge has been trimmed also.

Mr. Woods also told me that any problem facing the safety of any Georgia College student should be reported to the Georgia College Maintenance Department.

I applaud their concern for our safety now!

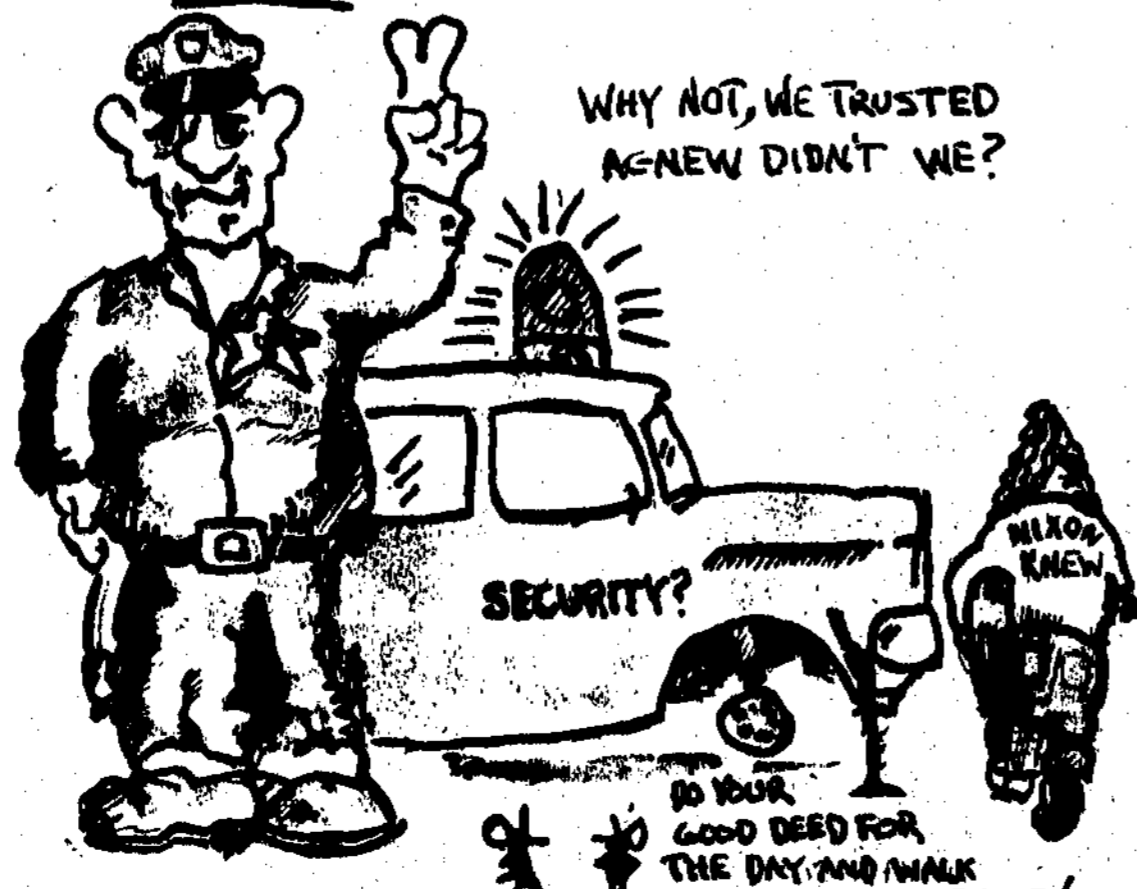
Dear Hazel,

I have noticed these extraordinary rules about Napier Dorm, too! I decided to check with Mrs. Adams about your questions, "Why and How long is the lobby going to be closed?" Mrs. Adams told me that the reason the Formal Lobby is "supposed to be closed" is because it is "supposed" to be used for Formal Activities and that if all students used it, the carpet would soon be worn out!

As for the question about why can't Napier Dorm residents use the kitchen in the Formal Lobby is because it also is for Formal Functions such as showers, sorority functions and etc., So therefore "Napier Common Individuals" have to use the kitchen in commons area!

Continued On Page 11

IN "SECURITY" WE TRUST??



Alma Mater

For your information and self-improvement, the Georgia College Alma Mater is presented below in toto:

ALMA MATER

Alma Mater, Teacher, Friend,
Counselor wise and strong,
For virtues taught,
For visions wrought,
We praise thee now in song.
For job of living,
For strength in strife,
For friendships that will not fail,
For love of beauty, of God, of life,
Alma Mater, Hail, all Hail!

Alma Mater, joy and pride,
Star in the dark of night,
Bright sun that shines
On life's designs,
Revealing truth and right;
Our gratitude we offer you;
Our faith, throughout travail;
Our loyalty, always renew.
Alma Mater, Hail, all Hail!

Continued From Page 10

Hazel

Your last question was a doozy! I checked with Mrs. Adams and she referred me to the Maintenance Department of GC. I asked Mr. Harley "Why are there no paper towel dispensers in Napier Dorm Restrooms?" Mr. Harley told me that the letter that students received on "what necessities to bring to Georgia College" stated that all residents must bring their own hand towels. Also none of the other Dorms have paper towel dispensers as of to my knowledge.

I guess you and other Napier Dorm Residents will have to abide by these rules.

Bye for now,
Jay-J

Continued From Page 10

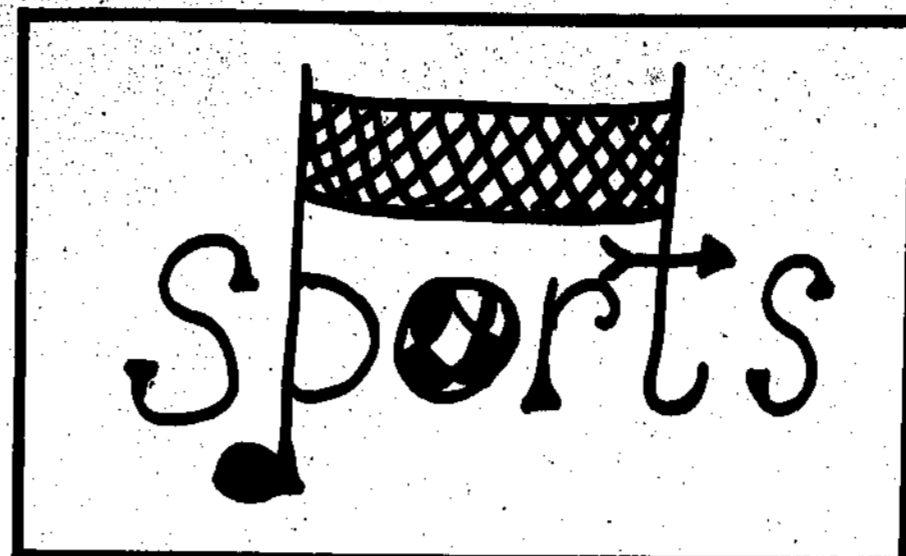
Editor

Danny also stated that he had seen instances where coeds didn't know they were in the same sorority. I really think this is understandable seeing how sororities only officially got started last May and one not coming until this fall.

There is a lot of status to be gained in belonging to a Greek group—not that we feel we're better than those students not Greek, but we have a good time belonging and working as a group and not as individuals all the time.

Right now it may seem that the Greeks here are not doing that much for Georgia College. But please, be patient with us. We're trying to get organized and strong. Only in that capacity can we perform a service to the college, community, and world.

Sincerely,
Carol Carson



1973-74 Basketball

Nov. 26	Georgia Southwestern
Nov. 30	Augusta College Tournament
Dec. 1	Fort Valley State
Dec. 3	LaGrange+
Dec. 6	Shorter+
Dec. 8	Fort Valley State+
Jan. 5	Berry
Jan. 7	Berry+
Jan. 14	Oglethorpe
Jan. 16	Paine College+
Jan. 21	North Georgia+
Jan. 24	Piedmont
Jan. 28	Shorter
Jan. 31	Paine College
Feb. 4	Belmont Abbey (N.C.)
Feb. 7	Univ. of N.C. at Charlotte
Feb. 9	Georgia Southwestern+
Feb. 11	Oglethorpe+
Feb. 15	Piedmont+
Feb. 16	North Georgia
Feb. 23	La Grange
Feb. 25	GIAC Tournament
Feb. 27	GIAC Tournament
Feb. 28	GIAC Tournament

+All home games will start at 7:30 p.m.

Continued From Page 12

Happenings

November 21
Mahavishnu Orchestra-Argent-Papa John Creach-7:30 P.M., M.A.

November 28
Wishbone Ash-M.A.

November 27
The Who-8 P.M., Omni

November 9-11
COUNTRY

November 9-11
The Dillardards & Wendy Waldman, 8 & 10 P.M., G.S.M.H.

Key to Abbreviations: S.H.-Symphony Hall; G.M.-Glenn Memorial Auditorium; G.S.U.-Georgia State University; C.C.-Civic Center; A.T.-Alliance Theatre; M.A.-Municipal Auditorium; G.S.M.H.-Great Southeast Music Hall

All the above listed events are located in the Atlanta area.

COLONNADE STAFF

Walter Young Editor-in-Chief	Suellen Griggs Associate Editor	Al Messer Business Manager
Literary Editor Featured Editor Photographer Editorial Cartoonist Circulation Manager Music Editor	Fred Green Fred Mobley Jerry Amerson Wade Taylor John Williamson David Hill	
Staff: Sonya Demore, Pattie Lewis, Jeannette Lewis, Pattie McGosmeck, Jennifer Sherwood, Ginny Boyer, Trude Tharpe, Gail Silvers.	Advisors: Dr. Ralph Hemphill, Dr. John Salstrom, Mr. Robert Lewis.	

PAPA'S PALACE

Jeans & Baggies for chicks & guys

Tops for chicks & guys

The New Casual Look

For Today's Youth

Located in basement of

VINCENT'S MEN SHOP

ON Hancock St.

Carole Bridals

Distinctive
Wedding Fashions

220 E. Greene St.

Milledgeville

452-6442

12-5:30

Monday-Saturday
Closed All Day Wednesday

News About BB

by Jeanette Lewis and Jackie Pitts

After a brief interview with Coach Roy Robinson, it seems as if the basketball team for the 73-74 year will be getting it on! Coach Robinson stated that "In spite of the fact of losing some members of the 72-73 team, we are looking forward to a better year. Last year he led the Colonials to a 10-14 record. We lost about eight games by one or two points," said Robinson.

For the last five and a half weeks, the guys have been working hard in learning new strategies and getting themselves in physical condition. "The team is moving along on schedule... maybe even ahead," explained Robinson. "We're working on fundamentals and putting in our offense and defense. We've got a lot of work to do yet in smoothing out the rough edges."

Robinson feels that they're faced with a tougher schedule this year. He's expecting trouble from the University of North Carolina, Belmont Abbey, Oglethorpe, North Georgia, and Shorter. "I think the league will be tougher as a whole," he said. "Most of the teams in the conference have improved and picked up new players. Our biggest problem will come from LaGrange."

The Colonials have only one star player returning from last year, junior forward Bill Lavery. Other team starters are junior guard Wayne Morris; sophomore guard Alvin Richardson; freshman forward Robert Williams and junior center Nathaniel Bolden. Other players on the team include Mel Harris, Randal Wansley, Merrill Morris and Roger Walker.

"They're all giving 100 per cent, but lack of experience will hurt. A .500 season or better would make me happy."

We hope the students and faculty support will improve from what it has been. Any team needs the support of the student body and faculty whom they represent.



SUPPORT THE COLONIALS

Colonnade Spotlights



In a realm of records, dance magazines, sweating college students, tights and leotards, and scores of pages of paperwork, a professor named Betty Poindexter reigns supreme. Any GC student who has experienced a HPER dancing course can describe with appreciation her method of coaxing, teasing, coercing, and occasionally yelling "Move it, move it!" as a means of encouraging awkward and graceful students alike to realize, there is more to dancing than the erratic shuffling of feet.

Though a member of the HPER department, Dr. Poindexter's doctoral degree, which she received from Texas Woman's University, is in dancing and related arts. During the summers she works in Lee, Massachusetts, at the Jacob's Pillow Dance Festival, a dance

school with a professional theatre.

Betty Poindexter's activities are not confined to dance instruction, however, she served as chairman of the Committee on Honors Humanities Seminar and of the Alumni Research and Honorarium Fund, Undergraduate Professional Preparation Coordinator of the HPER department, co-chairman of the Lyceum Committee, and member of the Campus Action Team, the Honors Subcommittee of the Academic Counsel, and the Recruitment Subcommittee of the Admissions Council. She is also advisor to Spectrum and Alpha Delta Pi, a contributing editor to the GC Tabloid, and an active participant in the Women's Club and the Milledgeville branch of the A.A.U.W.



Harriette L. Donahoo is an associate professor of the Health, Physical Education and Recreation Department of GC, with a B.S. degree from Alabama College and a M.A. degree from Columbia University. But she is better known as the lady seen occasionally in the college union—where she can escape the confines of her office and the hoards of students clamoring for her attention. Miss Donahoo's official title is Assistant Dean of Students, and she has the challenging task of mediating between students and administration.

The assistant dean's work covers a large area of student organization, since she is involved in all GC associations receiving allotments from the

students activities fee. Miss Donahoo co-ordinates schedules for the college union, Russell Auditorium, the GC bus, and the college calendar. She operates "behind the scenes" in the GC beauty pageant and sponsors several student volunteer projects such as the Cancer Walkathon and the Red Cross Bloodmobile.

Although her official title brands her as a member of the Establishment (i.e., Administration), Miss Donahoo is always willing to help students with problems of any type. She encourages the GC population to involve itself in the college life beyond academics and urges each member to utilize to the fullest the opportunities available on our campus.

The Tape Shop

Tapes - 3 For \$10.00

Brand Name Equipment

8 TRACK CAR PLAYER \$49.95

Records 77¢

Hwy. 441 N.

Music Reviews

Ekseption 5-Ekseption—Phillips PHS 700-002

Personnel: Rein van den Brock-trumpet, flugelhorn, valve trombone; Dick Remelink-soprano, alto and tenor saxés, flute; Cor Dekker-bass guitar; Peter deLeeuwe-drums, percussion 12 string guitar; Rick van der Linden-piano, organ, synthesizer, spinet.

Side I: Introduction; Siciliano; Vivance; For Example-For Sure; Virginal

Side 2: A La Turka, Midbar Session; Pie; My Son; Finale

This group Ekseption is from Holland and their music both jazz and rock is based on classical origins. Just to give examples of some of their music, the Introduction is from Beethoven's Fifth Symphony, Siciliano is from Bach's Sonata for flute and harpsichord in E. The Vivance is from Bach's Allegro from the concerto for violin and strings in A minor. On the second side, A La Turka is from Mozart's Piano Sonata No. II in A. The Finale is also from Beethoven. The other music is written by the pianist except for "For Example-For Sure" which is by Keith Emerson.

The music is very well arranged and played and, by the way, there is no vocal. If you like classical, rock, or jazz, you'll like this album and this group.

Electra Glide in Blue-Soundtrack, UA-LA062-H

Music composed and directed by James William Gueric

Side I: Morning, Prelude, Meadow Mountain Top, Most of All, Jolene's Dance

Side II: Concert, The Chase, Song of Sad Bottles, Monument Valley, Tell Me.

The movie Electra Glide in Blue is also produced and directed by James William Gueric. There are certain songs such as Meadow Mountain Top and Song of Sad Bottles which are composed by others. These two songs are by Mark Spoelstra. Most of All is by Alan Freed and Harvey Fugua and done by the Marcells. Free from the Devil is the song played at the concert and is done by Madura.

James William Gueric is Chicago's producer as well; in fact, several of the players perform not only in the music but in the movie as well. Terry Kath plays bass and the killer, Walter Parazaider, plays lead Sax and Loose Lips, Lee Loughnane plays lead trumpet and Pig Man, James Pankow plays lead trombone, and Peter Cetera plays Bob Zemko a suspect killer.

The music sounds very much like Chicago's style and that's because of their producer. The music is mostly jazz although there is country, hard rock, and Be-Bop mixed in at times.

The soundtrack is good, but the movie is better because you can see what's going on.

In the album you get a book with scenes from the movie and two posters.

BSA meetings are held every Monday evening at 6:30 p.m. at the Wesley Foundation. Members are asked to attend all meetings if you want to know what's happening among the Black brothers and sisters on Georgia College campus.

Know Your Student Body

by Patty McCormick

For this week's Know Your Student Body the Colonnade takes a look at the activities of Gwendolyn Levester, a senior from Eatonton, Ga. majoring in Elementary Education.

Gwendolyn's goal is to teach children and in teaching them, show how important education is, and how it can be something enjoyable. She hopes to have the opportunity to work with the underprivileged children at some time in her career. She would really enjoy working on a tennis team, and help other people to learn to appreciate the sport which she has come to enjoy.

Although Gwendolyn is affiliated with different campus organizations her main interests lie in simply getting to know other people and their interests. Gwendolyn is a unique person because she has a sincere concern of all of humanity which is almost rare in these times.

Gwendolyn's interests include playing tennis, bike riding, watching plays with a critic's eye, listening to all kinds of music; excluding jazz, and what she calls "hard, hard rock." Her



interest in camping or "roughing it" was tremendously increased recently when she participated in an outing which was planned by the Outdoor Education Committee.

In conclusion, Gwendolyn's hope for life is to be happy and enjoy life.

Micro News

The Microbiology class under the instruction of Mrs. Doris Moody visited McGaw Laboratories Wednesday. The purpose of the trip was to observe the methods of preparation of intravenous fluids used in local and surrounding hospitals. The students, accompanied by Mrs. Moody and two microbiologists employed at McGaw, were given a tour of the Microbiology lab, where they observed the sterilization of fluids. They were also shown the animal lab where the white mice and rabbits are used for testing for fever producing microorganisms in the fluids. From that department, the group continued to the conference room where a slide presentation was shown on the activities of McGaw. After a question and answer period, the group returned to the campus.

MERLE NORMAN

COSMETIC STUDIO

&

BOUTIQUE

Jackie

Hunnicut

441 Hatcher Sq.

Musical Happenings

CLASSICAL
November 9

Atlanta Symphony Orchestra & Chamber Chorus, Handel's "Messiah," Robert Shae, cond.; 8:30 P.M., S.H.

Ruth Slenczynska, pianist; 8:30 P.M., Unitarian Church

Atlanta Emory Orchestra, William Lemonds, cond., Robert de Gaetano, pianist; Judith Beattie, harp; Emory Women's Chorale & Glee Club-Music of England, 8:15 P.M., G.M.

November 10

Atlanta Symphony Orchestra & Chamber Chorus (Messiah repeat); 8:30 P.M., S.H.

November 11

GSU Orchestra, Alan Balter, cond.; 8:15 P.M., GSU Recital Hall

November 15

Atlanta Symphony Orchestra, Robert Shaw, cond., Elizabeth Mannion, mezzo-soprano; John Stewart, tenor; Ara Berberian, baritone; 8:30 P.M., S.H.

November 16

Gemini Quartet of Amsterdam: Eugenie van der Grinten, flute; Henvan der Grinten, oboe; Gijs van der Grinten, violin-violin; Frans van der Grinten, cello; 8:15 P.M. G.M.

November 16 & 17

Atlanta Orchestra (Shaw-Mannion-Stewart-Berberian repeat) 8:30 P.M., S.H.

November 24

Atlanta Symphony Orchestra Family Concert, Robert Shaw, cond., Leandros Aconcha, 7-year-old pianist; 8:30 P.M., C.C.

JAZZ

November 9

Music Made Famous by Glenn Miller; 8 P.M., C.C.

November 9 & 10

"Jazz Graffiti", Ruth Mitchell Dance Company-A jazzrock dance experience, Music by Carleton Palmer & New Age Band, vocals by Sharon Scott, 8:30 P.M., A.T.

ROCK

November 18

Focus-8 P.M., Omni

November 14

Freddie King & Tower of Power-7:30 P.M., M.A.

November 19

Josephine Baker-8 P.M., C.C.

November 13-18

Mason Williams 8 & 10 P.M., G.S.M.H.

Continued On Page 11